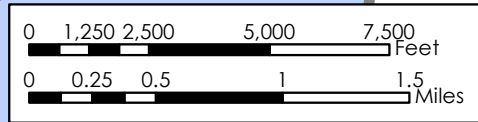
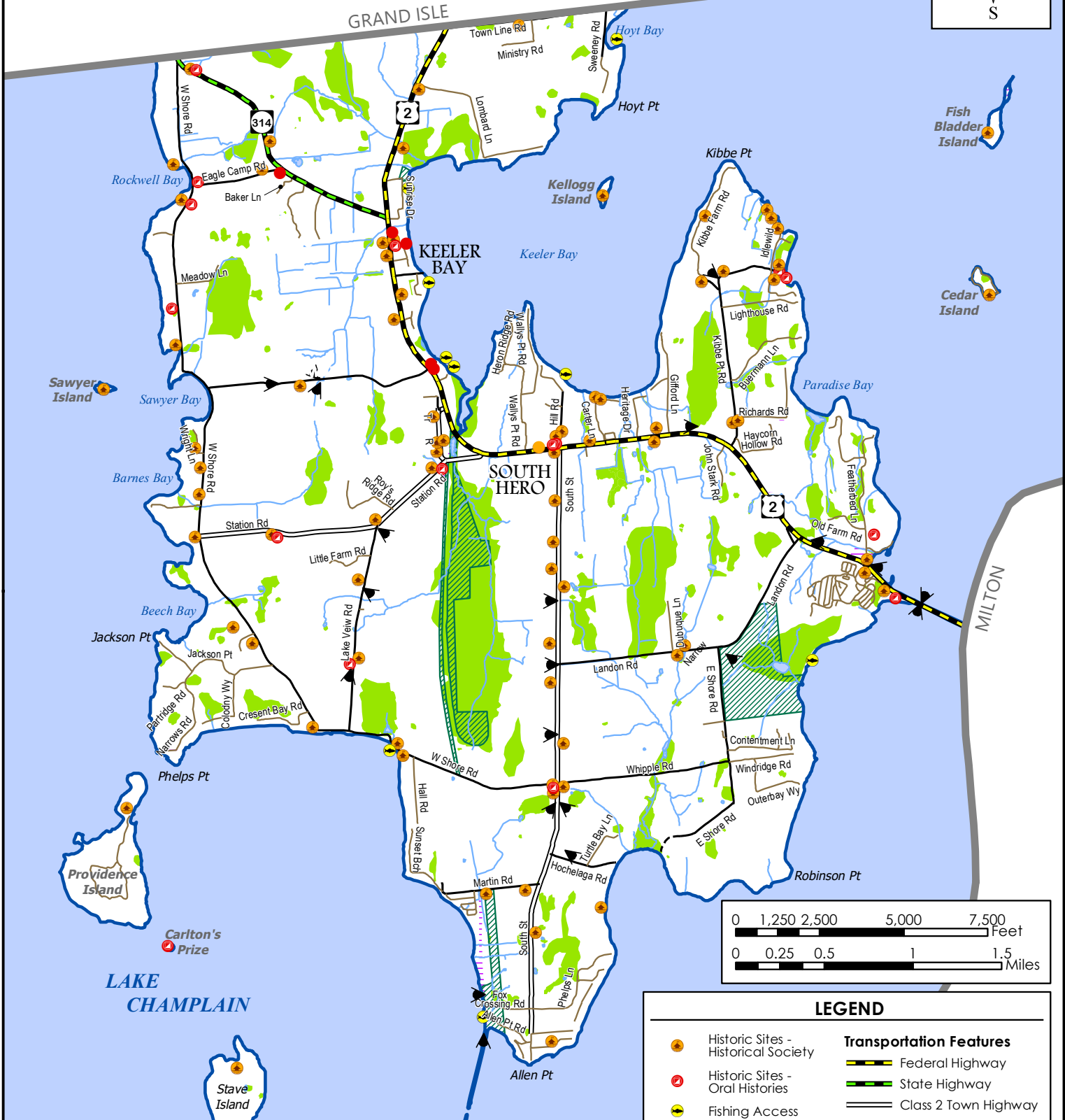
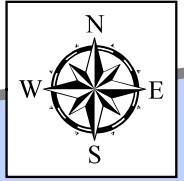


COMMUNITY ASSETS

Town of South Hero



LEGEND	
	Historic Sites - Historical Society
	Historic Sites - Oral Histories
	Fishing Access
	Scenic Views
	Shoreline
	Lake or Pond
	Wetland
	Federal Highway
	State Highway
	Class 2 Town Highway
	Class 3 Town Highway
	Class 4 Town Highway
	Private Road
	Town Boundary
	Public Land

Data Sources: All map features derived from VGIS digital coverages. Vermont Coordinate System Transverse Mercator, NAD 83.
For planning purposes only.
 North arrow on map refers to Grid North.

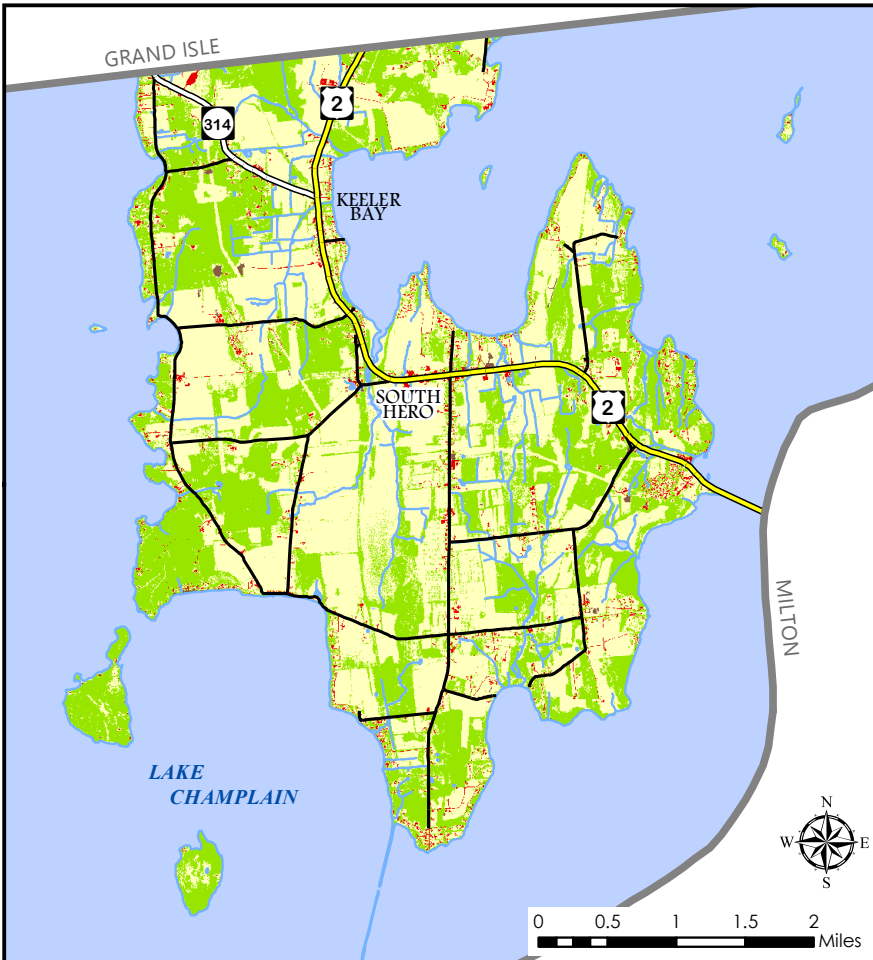
Northwest


Vermont Coordinate System Transverse Mercator, NAD 83. For planning purposes only.
 Prepared by:
 NRPC
 75 Fairfield Street
 St. Albans, VT 05478
 (802) 524-5958
 www.nrpcvt.com

REGIONAL PLANNING COMMISSION

Z:\GIS\Projects\County\GrandIsle\SouthHero\TownPlan2023\C\CommunityAssets.mxd

CURRENT LAND USE



 Built Up (buildings, roads, etc.)

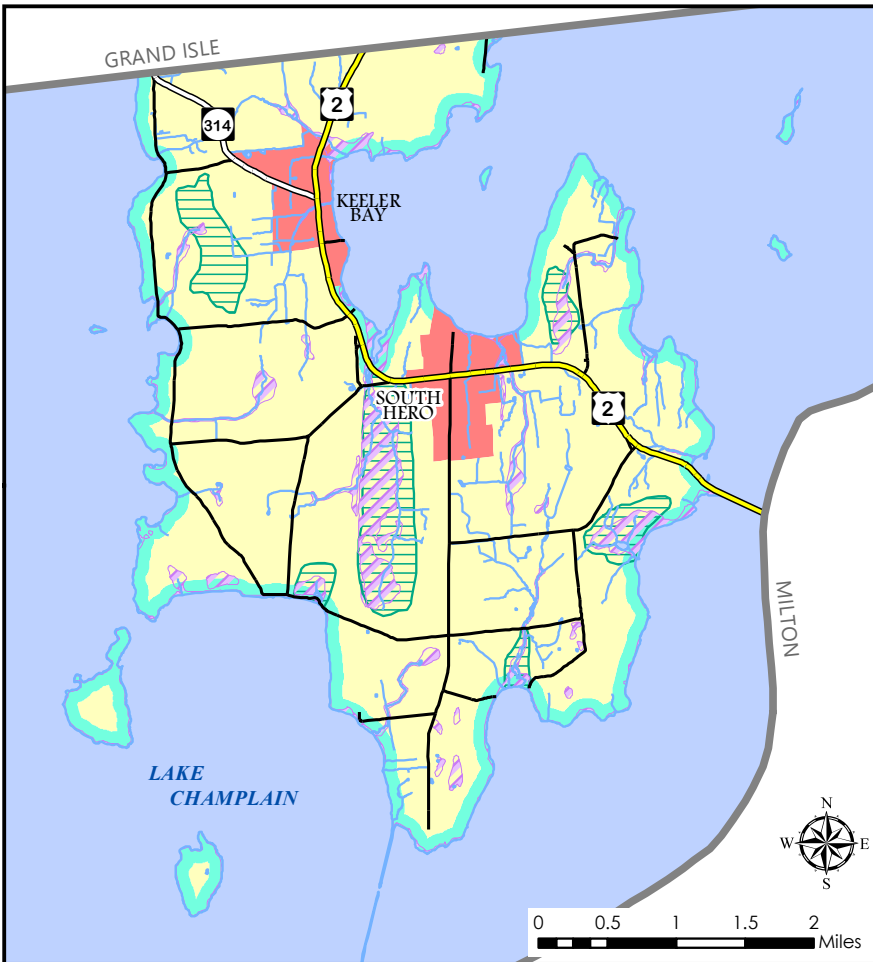
 Grass/Shrub

 Tree Canopy

 Surface Water

 Bare Soil

CURRENT ZONING



Village District

Rural/Residential District

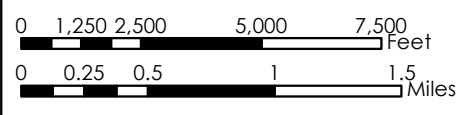
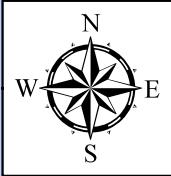
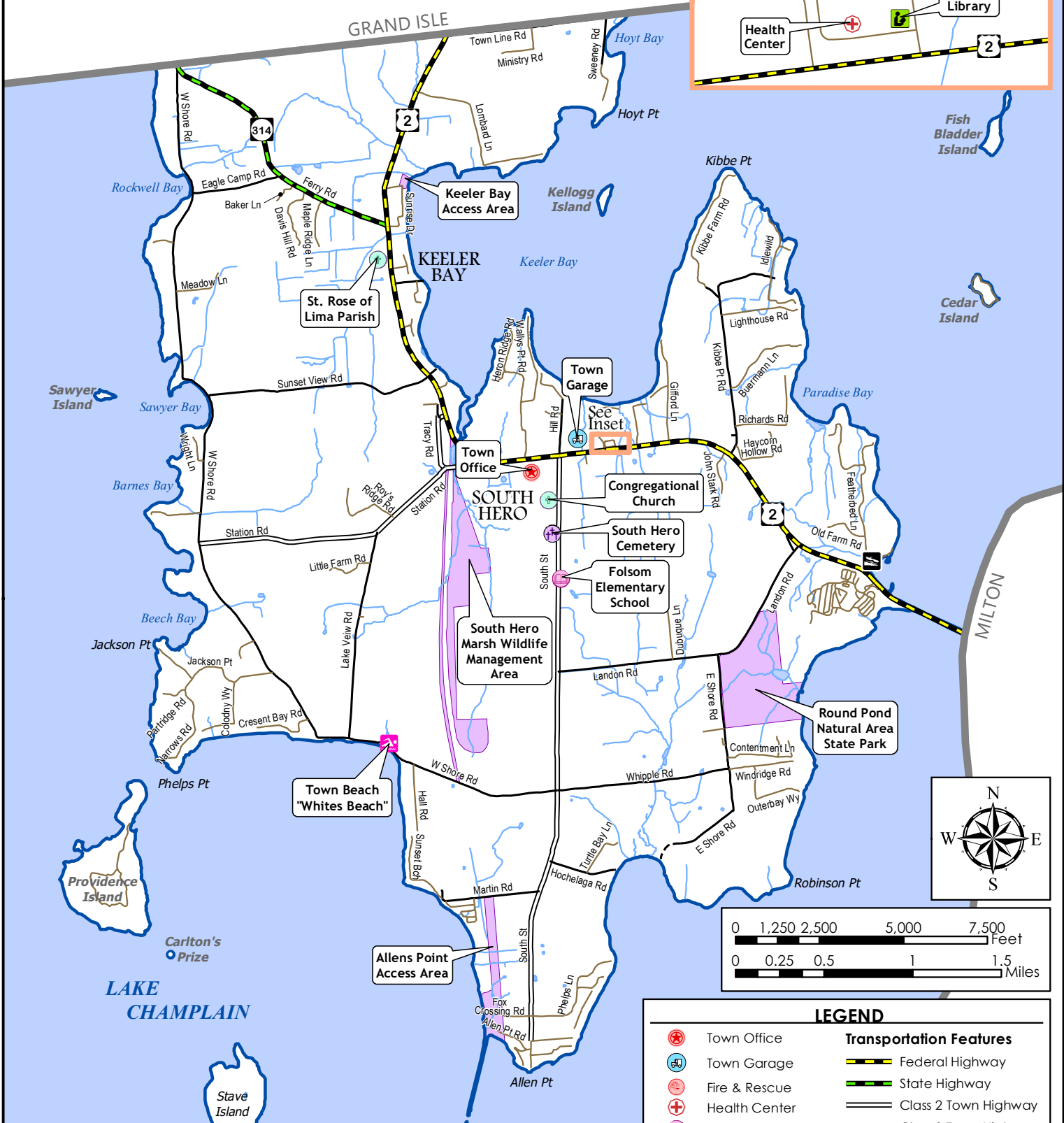
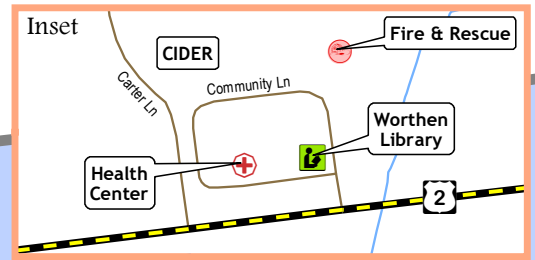
Shoreland District

Conservation Overlay

Flood Hazard Overlay

FACILITIES & UTILITIES

Town of South Hero



LEGEND	
	Town Office
	Town Garage
	Fire & Rescue
	Health Center
	School
	Place of Worship
	Cemetery
	Library
	Town Beach
	Boat Access
	Public Land
	Federal Highway
	State Highway
	Class 2 Town Highway
	Class 3 Town Highway
	Class 4 Town Highway
	Private Road
	Shoreline
	Stream or Brook
	Lake or Pond

Data Sources: All map features derived from VGIS digital coverages. Vermont Coordinate System Transverse Mercator, NAD 83.

For planning purposes only. North arrow on map refers to Grid North.

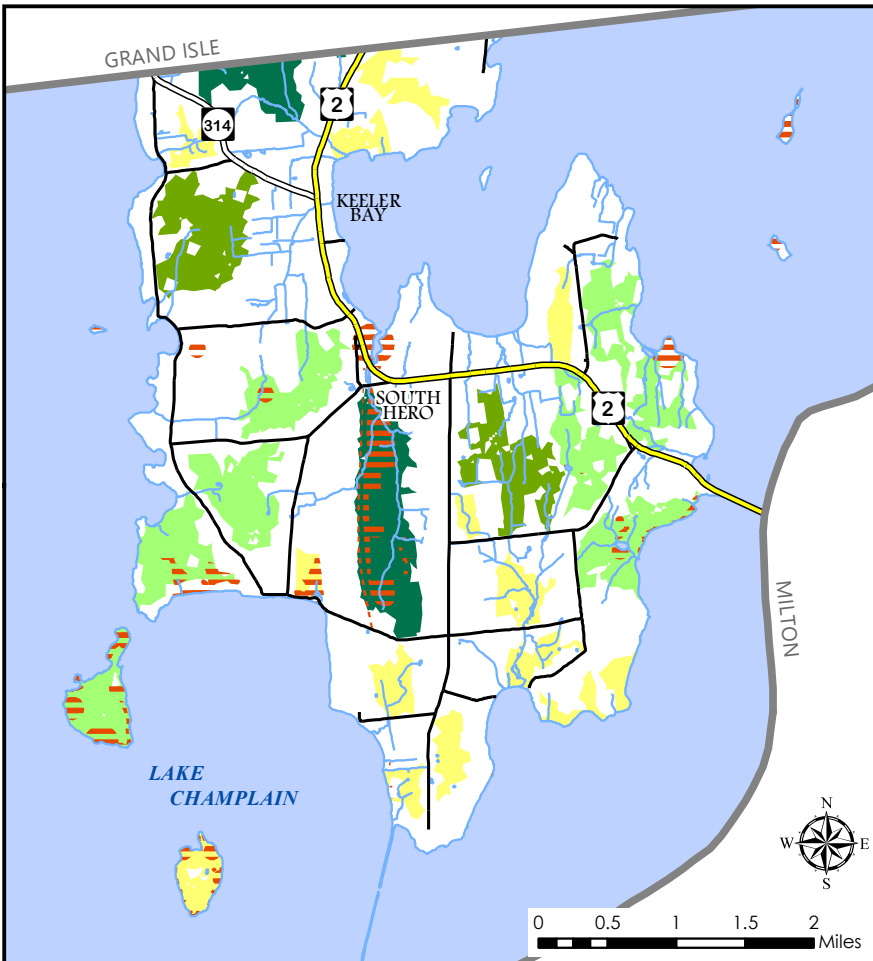
Northwest


Vermont Coordinate System Transverse Mercator, NAD 83. For planning purposes only. Prepared by: NRPC, 75 Fairfield Street, St. Albans, VT 05478, (802) 524-5958, www.nrpcvt.com

REGIONAL PLANNING COMMISSION

Z:\GIS\Projects\County\GrandIsle\SouthHero\TownPlan2023\Facilities&Utilities.mxd

HABITAT & NATURAL AREAS



 Rare, Threatened or Endangered Species*
*For more information on this data see Appendix, need page #

Habitat Block Analysis - Block Acreage

 20 - 100  100 - 200  200 - 300  300 - 400

Hydro

South Hero, Vermont Act 174

The Energy Development Improvement Act of 2016

This map and the corresponding data is intended to be used to inform energy planning efforts by municipalities and regions. This may also be used for conceptual planning or initial site identification by those interested in developing renewable energy infrastructure. The maps do **NOT** take the place of site-specific investigation for a proposed facility and cannot be used as "siting maps."



Legend

- Substation
- 3 Phase Power Line
- Transmission Line
- Designated Outstanding Resource Water
- Known Constraint - Designated National Wild & Scenic River
- Possible Constraint - Stressed or Impaired Water
- Possible Constraint - RINAs

Sources: VCGI

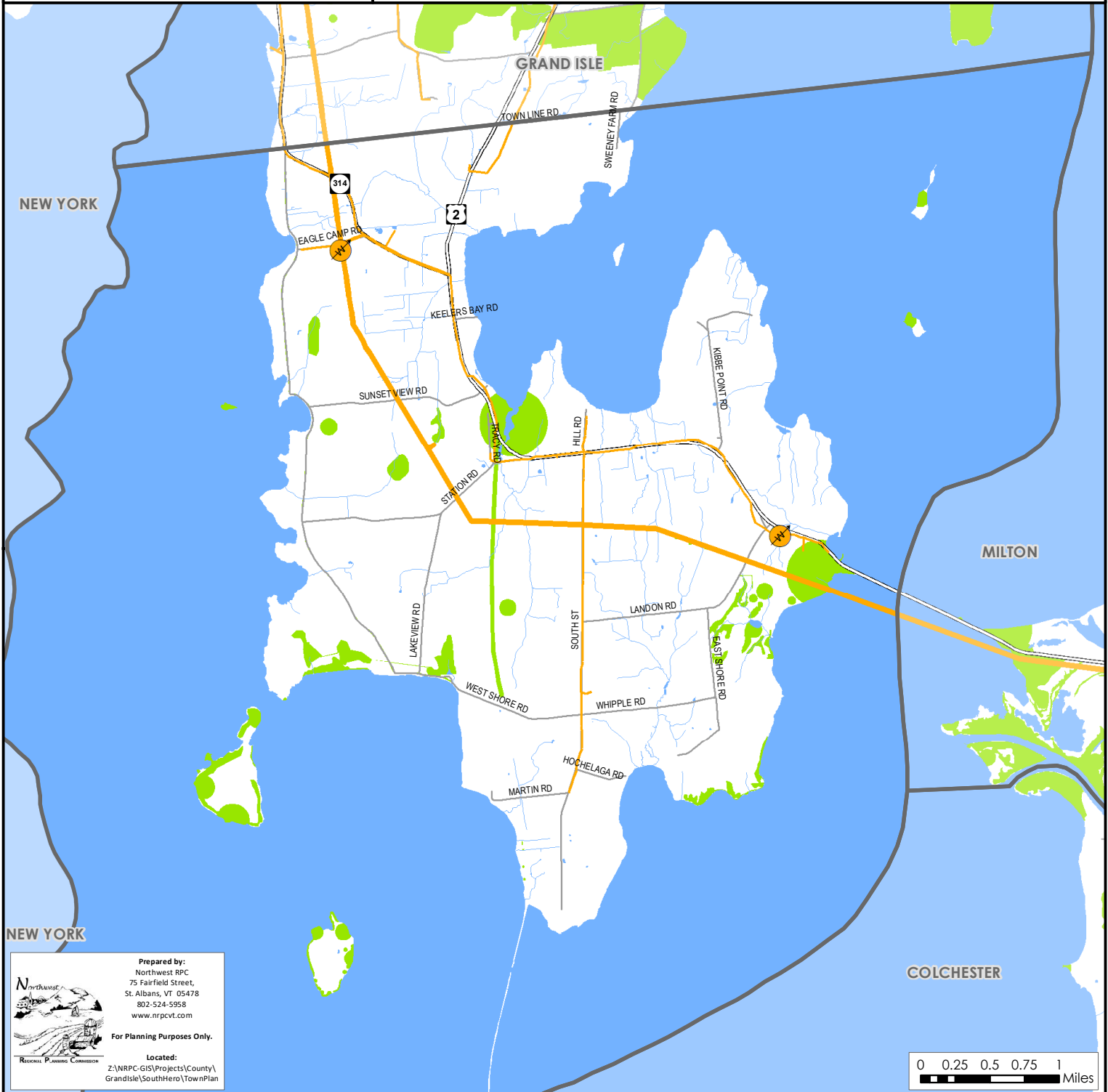
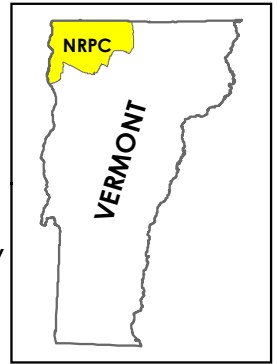
Disclaimer: The accuracy of information presented is determined by its sources. Errors and omissions may exist. The Northwest RPC is not responsible for these. Questions of on-the-ground location can be resolved by site inspections and/or surveys by a registered surveyor. This map is not sufficient for delineation of features on-the-ground. This map identifies the presence of features, and may indicate relationships between features, but is not a replacement for surveyed information or engineering studies.

Potential Hydroelectric Facility

- < 50 kW Capacity
- > 50 kW Capacity
- High Hazard with < 50 kW Capacity
- High Hazard with > 50 kW Capacity

Operating Hydroelectric Facility

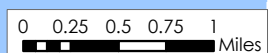
- Dam not on National Wild and Scenic River
- Dam on National Wild and Scenic River



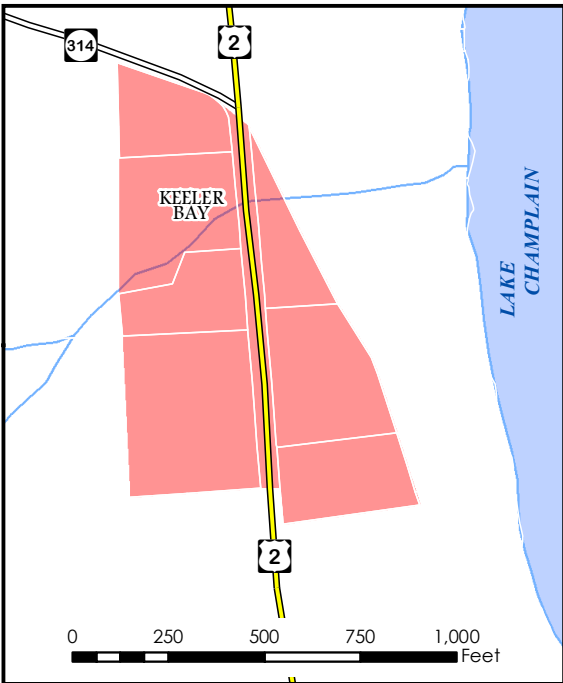
Prepared by:
Northwest RPC
75 Fairfield Street,
St. Albans, VT 05478
802-524-5958
www.nrpcvt.com

For Planning Purposes Only.

Located:
Z:\NRPC-GIS\Projects\County\
GrandIsle\SouthHero\TownPlan



KEELER BAY VILLAGE CENTER DESIGNATION

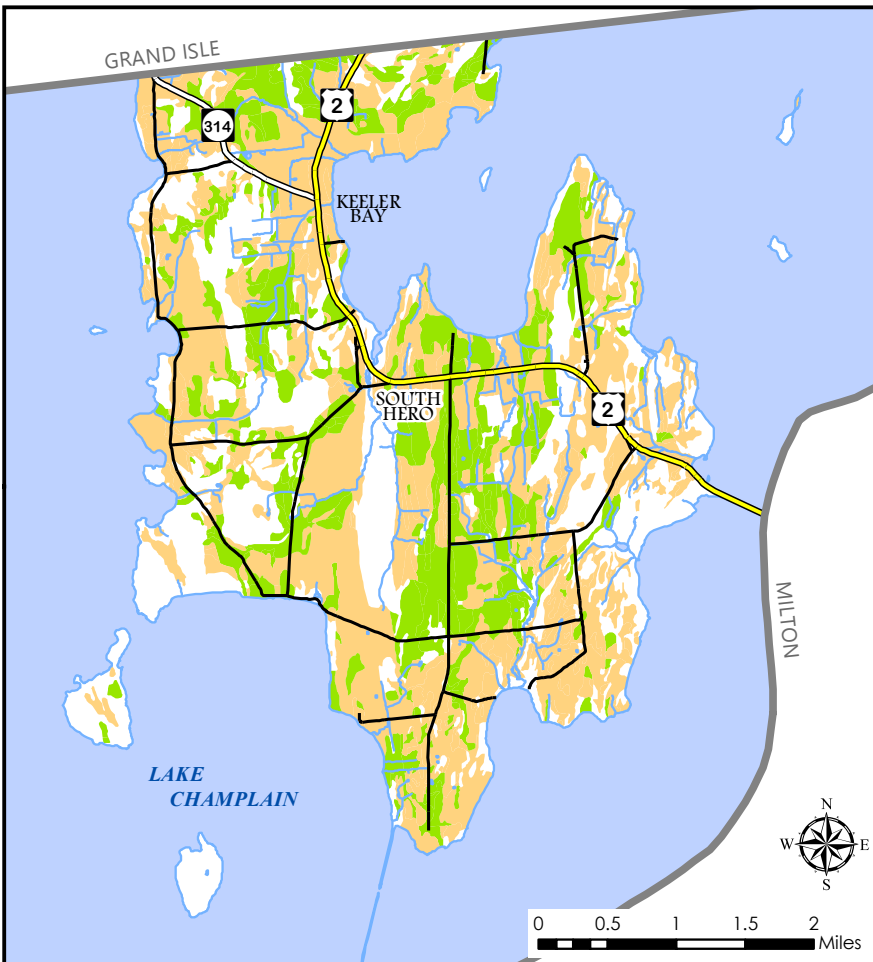


 Keeler Bay Village Designation Boundary

 Parcel Boundary (white lines)



PRIMARY AGRICULTURAL SOILS



 Prime Soils

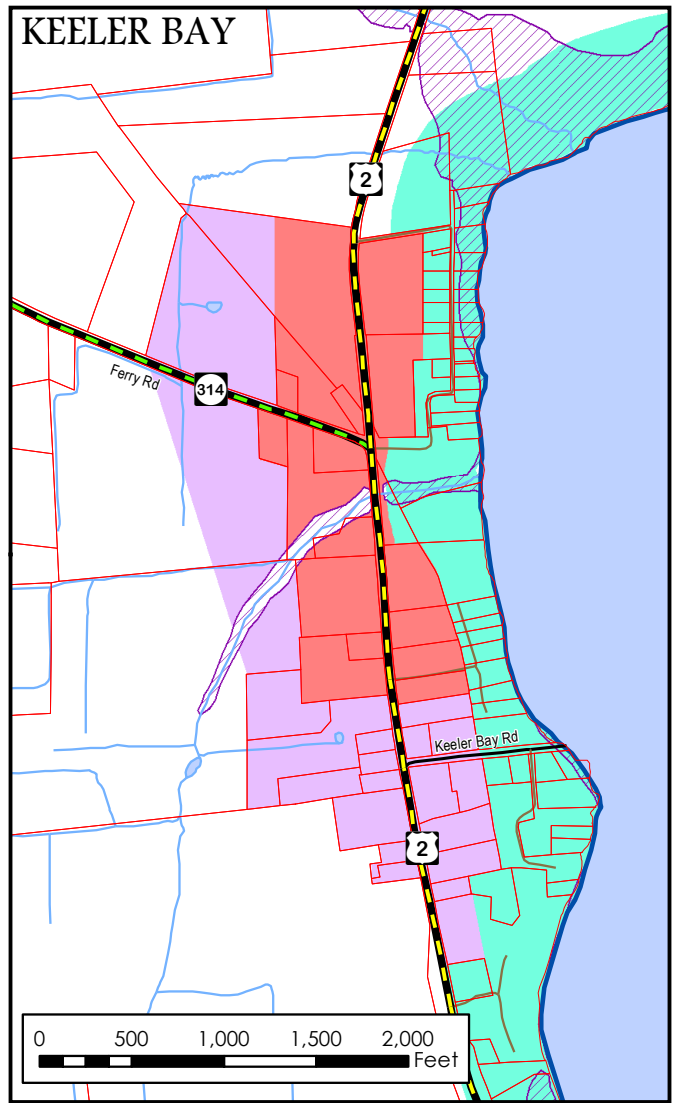
 Statewide Importance Soils

PROPOSED LAND USE

Village Insets

LEGEND

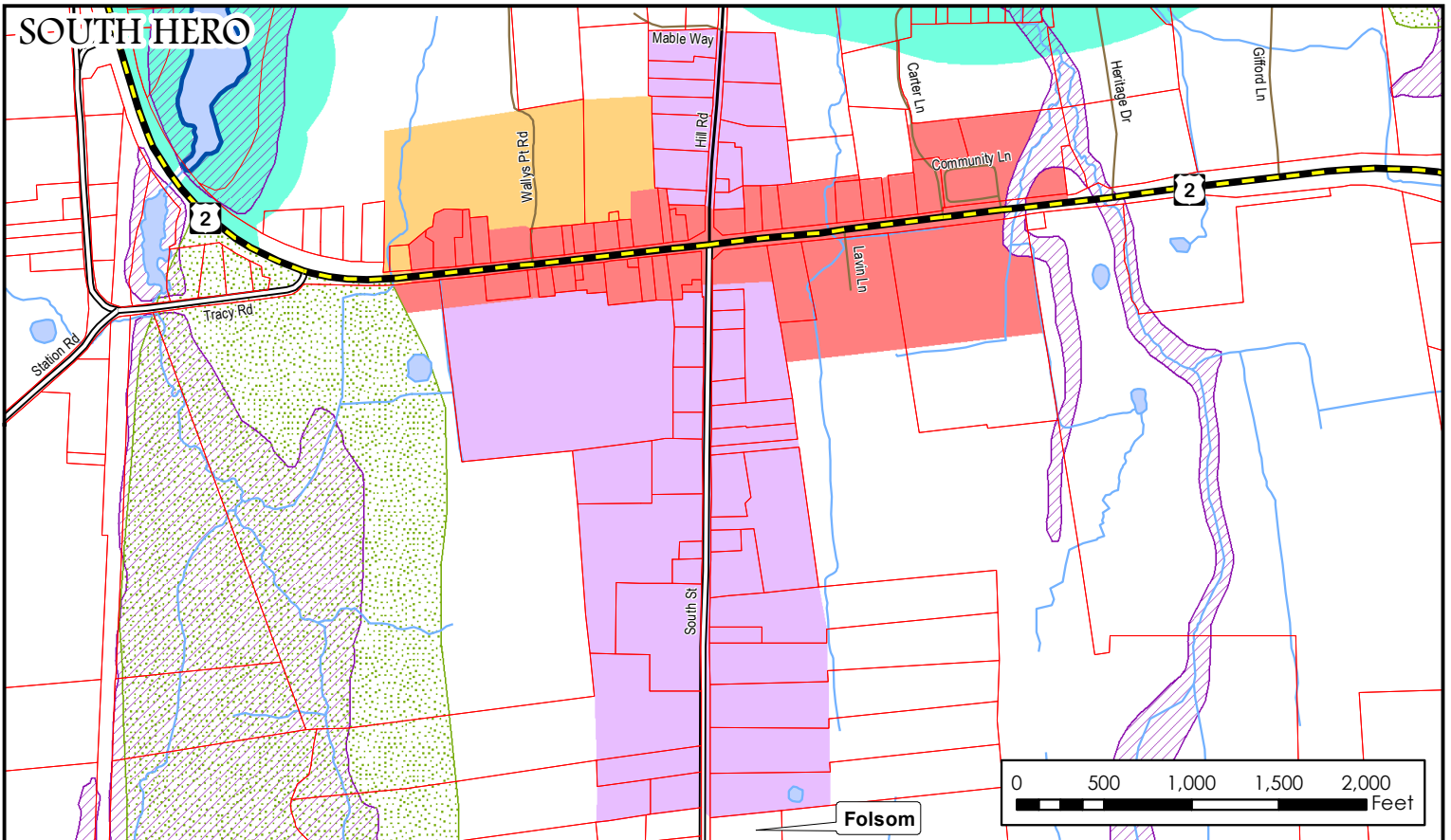
Planning Area Features	Transportation Features
Village Core	Federal Highway
Village Neighborhood	State Highway
Under Consideration	Class 2 Town Highway
Shoreland	Class 3 Town Highway
Rural Residential	Class 4 Town Highway
Conservation	Private Road
Flood Hazard	
Other Features	Surface Water Features
Town Boundary	Shoreline
Parcel Boundary	Stream or Brook
	Lake or Pond



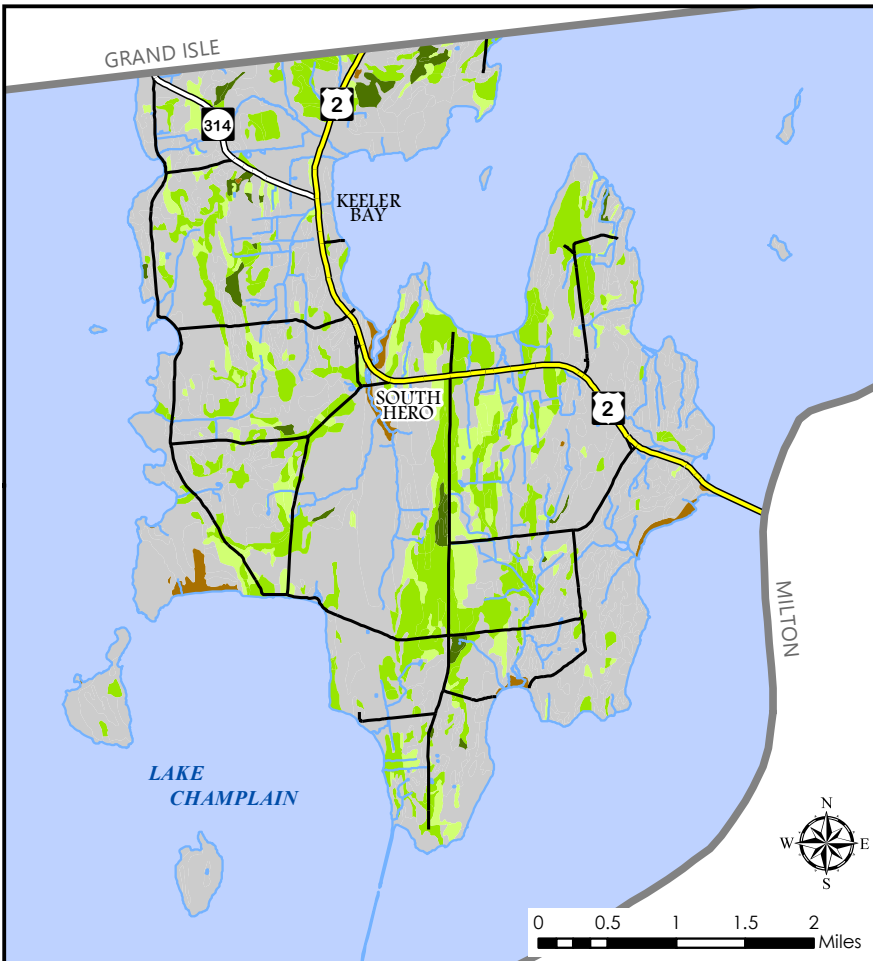
Vermont Coordinate System
Transverse Mercator, NAD 83.
For planning purposes only.
Prepared by:
NRPC
75 Fairfield Street
St. Albans, VT 05478
(802) 524-5958
www.nrpcvt.com

Z:\GIS\Projects\County\Grandisle\SouthHero/
TownPlan2023\ProposedLandUse-VillageInsets.mxd

Data Sources: All map features derived from VGIS digital coverages. Vermont Coordinate System Transverse Mercator, NAD 83. **For planning purposes only.** North arrow on map refers to Grid North.



SEPTIC SUITABILITY



Well Suited

Moderately Suited

Marginally Suited

Not Suited

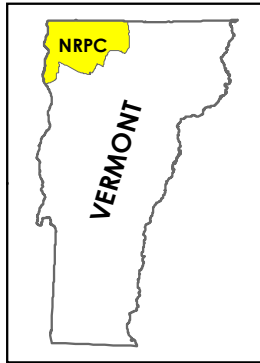
Not Rated

Solar

South Hero, Vermont Act 174

The Energy Development Improvement Act of 2016

This map and the corresponding data is intended to be used to inform energy planning efforts by municipalities and regions. This may also be used for conceptual planning or initial site identification by those interested in developing renewable energy infrastructure. The maps do **NOT** take the place of site-specific investigation for a proposed facility and cannot be used as "siting maps."

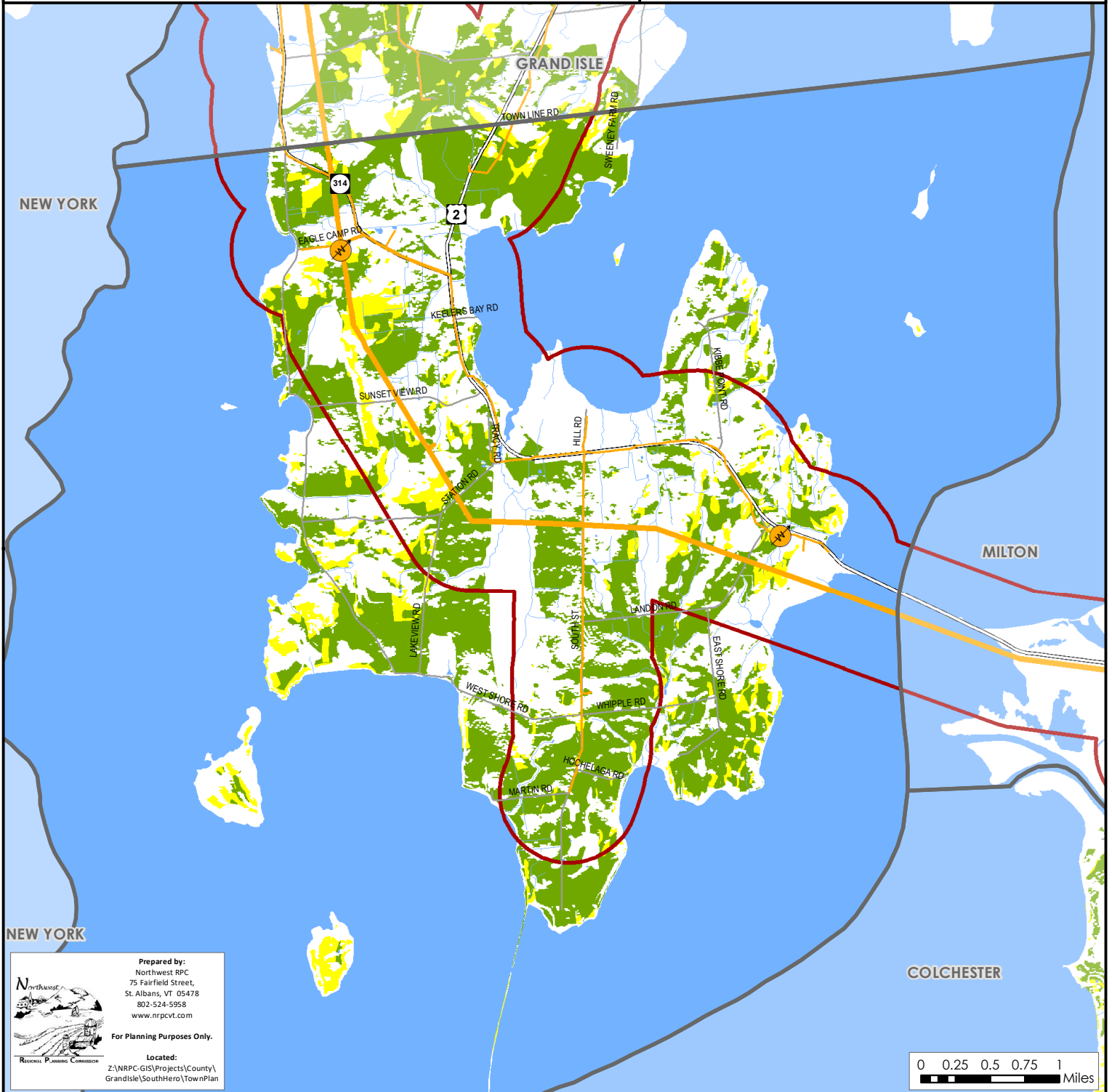


Legend

- Substation
- 3 Phase Power Line
- Transmission Line
- 1/2 Mile Buffer (3 Phase Power Line & Transmission Line)
- Prime Solar/No Known Constraints
- Base Solar/Possible Constraints

Sources: VCGI

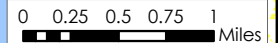
Disclaimer: The accuracy of information presented is determined by its sources. Errors and omissions may exist. The Northwest RPC is not responsible for these. Questions of on-the-ground location can be resolved by site inspections and/or surveys by a registered surveyor. This map is not sufficient for delineation of features on-the-ground. This map identifies the presence of features, and may indicate relationships between features, but is not a replacement for surveyed information or engineering studies.



Prepared by:
Northwest RPC
75 Fairfield Street,
St. Albans, VT 05478
802-524-5958
www.nrpcvt.com

For Planning Purposes Only.

Located:
Z:\NRPC-GIS\Projects\County\
GrandIsle\SouthHero\TownPlan



SOUTH HERO VILLAGE CENTER DESIGNATION

LAKE
CHAMPLAIN

SOUTH
HERO


2

2

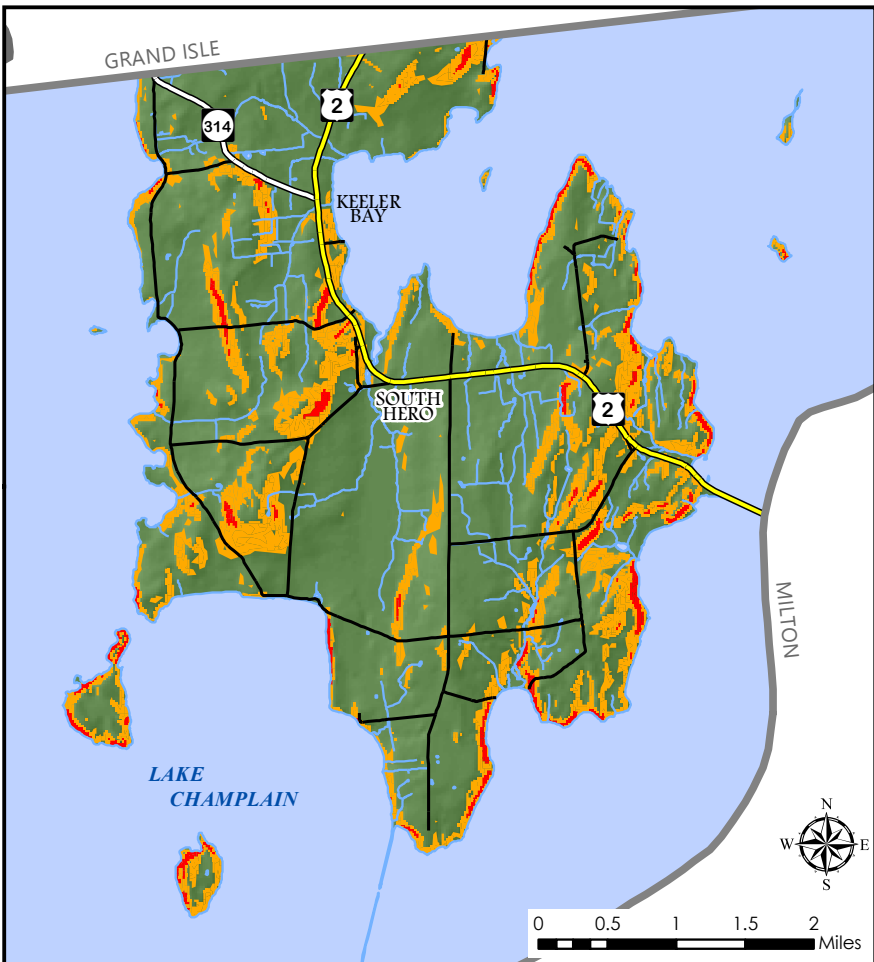


 South Hero Village
Designation Boundary

Parcel Boundary (white lines)

0 250 500 750 1,000
 Feet

STEEP SLOPES

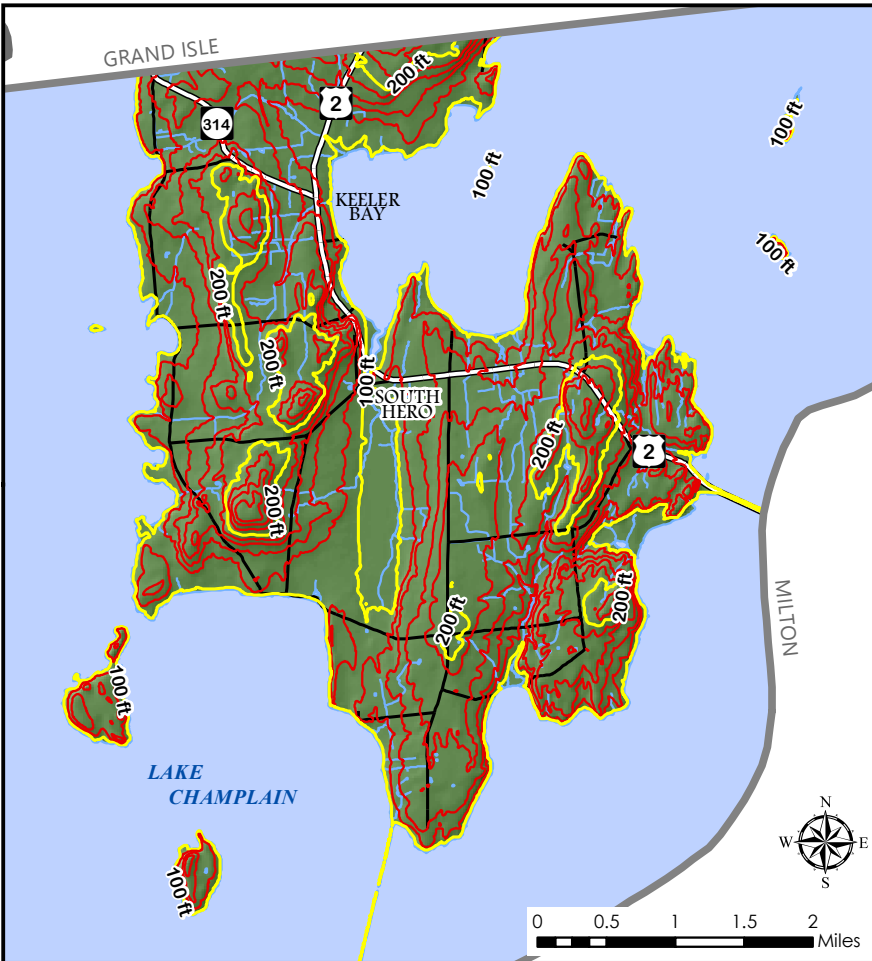


 Slopes 0% - 7%

 Slopes 8% - 14%

 Slopes >15%

TOPOGRAPHY



— 20 Foot Contour

— 100 Foot Contour

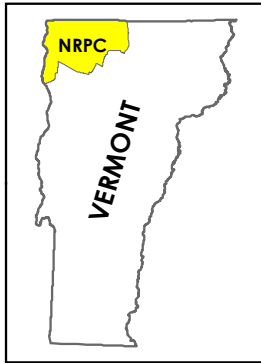
Transmission & 3 Phase Power Infrastructure

South Hero, Vermont





Act 174

The Energy Development Improvement Act of 2016

This map and the corresponding data is intended to be used to inform energy planning efforts by municipalities and regions. This may also be used for conceptual planning or initial site identification by those interested in developing renewable energy infrastructure. The maps do **NOT** take the place of site-specific investigation for a proposed facility and cannot be used as "siting maps."

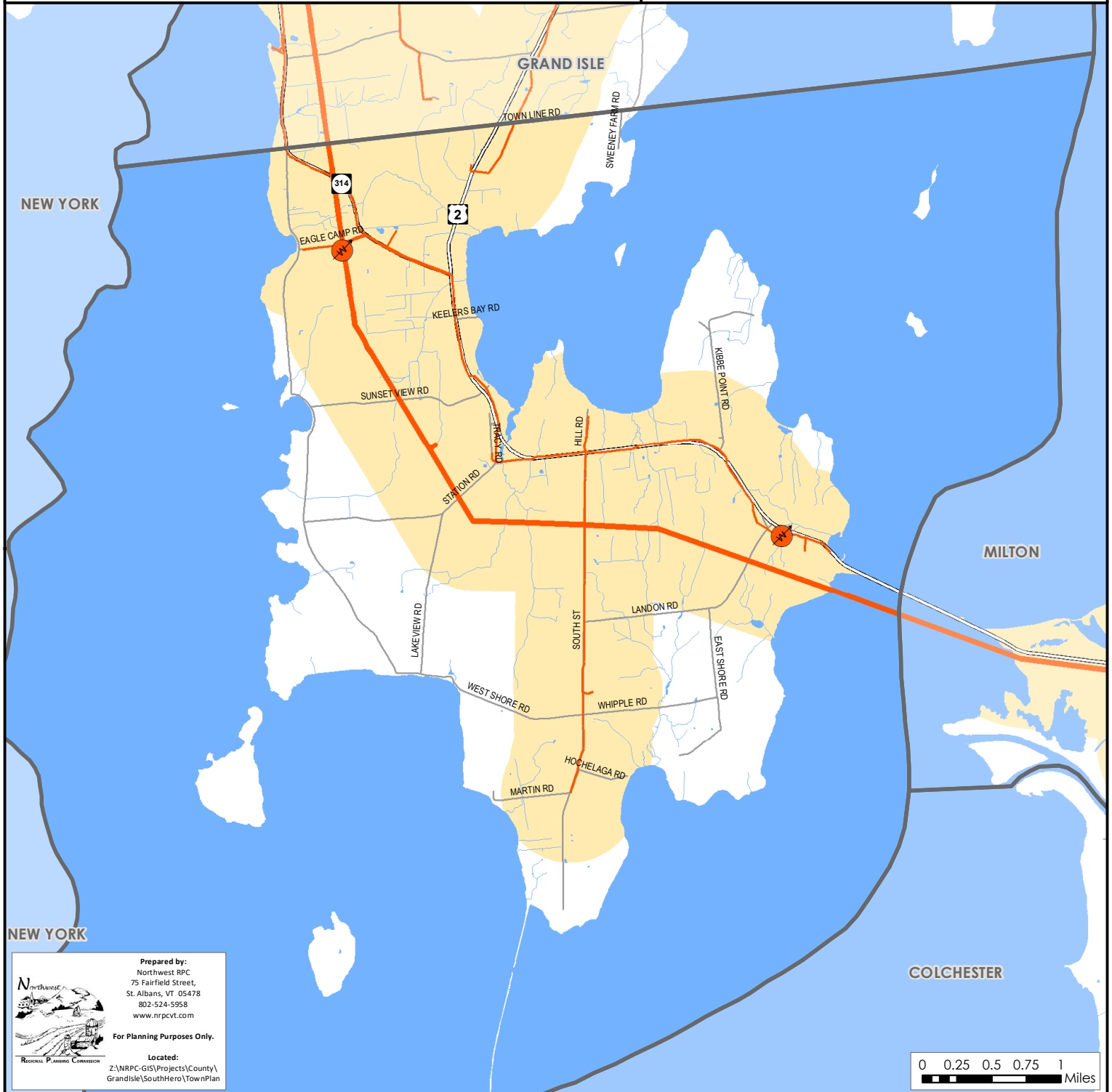


Legend

-  Substation
-  3 Phase Power Line
-  Transmission Line
-  1/2 Mile Buffer (3 Phase Power Line & Transmission Line)

Sources: VCGI


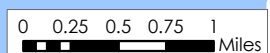
Disclaimer: The accuracy of information presented is determined by its sources. Errors and omissions may exist. The Northwest RPC is not responsible for these. Questions of on-the-ground location can be resolved by site inspections and/or surveys by a registered surveyor. This map is not sufficient for delineation of features on-the-ground. This map identifies the presence of features, and may indicate relationships between features, but is not a replacement for surveyed information or engineering studies.



Prepared by:
Northwest RPC
75 Fairfield Street,
St. Albans, VT 05478
802-524-5958
www.nrpcvt.com

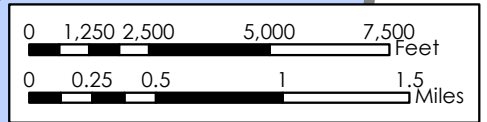
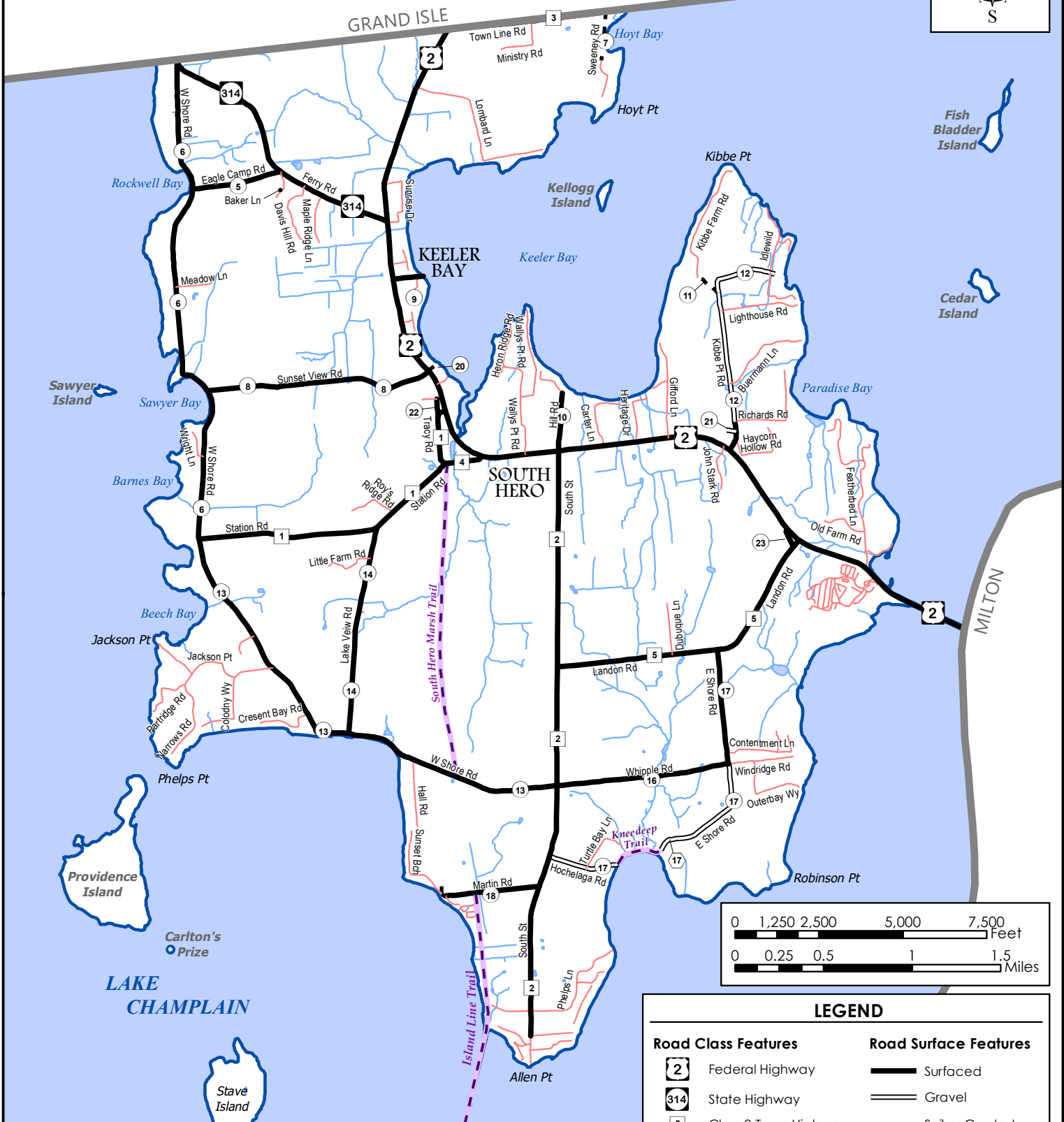
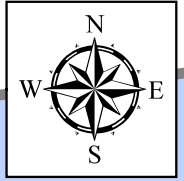
For Planning Purposes Only.

Located:
Z:\NRPC-GIS\Projects\County\
GrandIsle\SouthHero\TownPlan

TRANSPORTATION SYSTEM

Town of South Hero



LEGEND	
Road Class Features	Road Surface Features
Federal Highway	Surfaced
State Highway	Gravel
Class 2 Town Highway	Soil or Graded
Class 3 Town Highway	Private Road - Unknown Surface Type
Class 4 Town Highway	Other Features
Surface Water Features	Legal Trail
Shoreline	Town Boundary
Stream or Brook	
Lake or Pond	

Data Sources: All map features derived from VGIS digital coverages. Vermont Coordinate System Transverse Mercator, NAD 83. **For planning purposes only.** North arrow on map refers to Grid North.

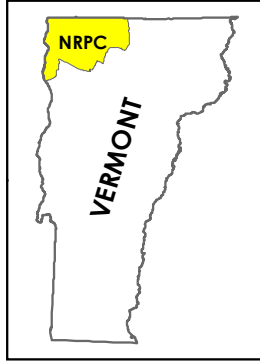
Vermont Coordinate System Transverse Mercator, NAD 83. For planning purposes only. Prepared by: NRPC, 75 Fairfield Street, St. Albans, VT 05478, (802) 524-5958, www.nrpcvt.com
 I:\GIS\Projects\County\GrandIsle\SouthHero\10-wrPlan2023\TransportationSystem.mxd

Utility Service Areas

South Hero, Vermont Act 174

The Energy Development Improvement Act of 2016

This map and the corresponding data is intended to be used to inform energy planning efforts by municipalities and regions. This may also be used for conceptual planning or initial site identification by those interested in developing renewable energy infrastructure. The maps do **NOT** take the place of site-specific investigation for a proposed facility and cannot be used as "siting maps."



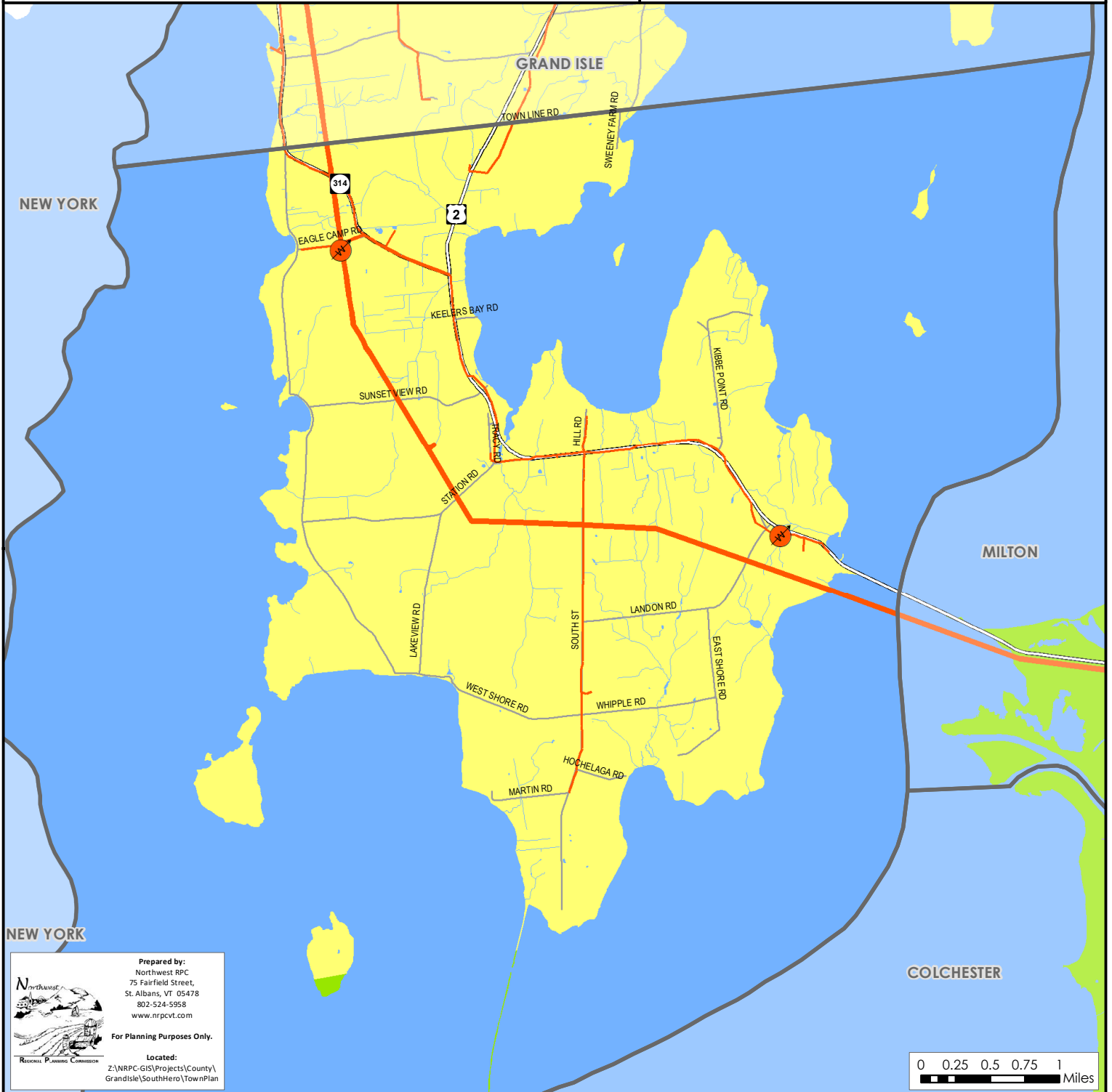
Legend

Utility Service Area Features

- Green Mountain Power
- Swanton Village Electric
- Vermont Electric Co-op
- Enosburg Falls Electric
- Substation
- 3 Phase Power Line
- Transmission Line

Sources: VCGI

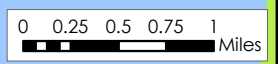
Disclaimer: The accuracy of information presented is determined by its sources. Errors and omissions may exist. The Northwest RPC is not responsible for these. Questions of on-the-ground location can be resolved by site inspections and/or surveys by a registered surveyor. This map is not sufficient for delineation of features on-the-ground. This map identifies the presence of features, and may indicate relationships between features, but is not a replacement for surveyed information or engineering studies.



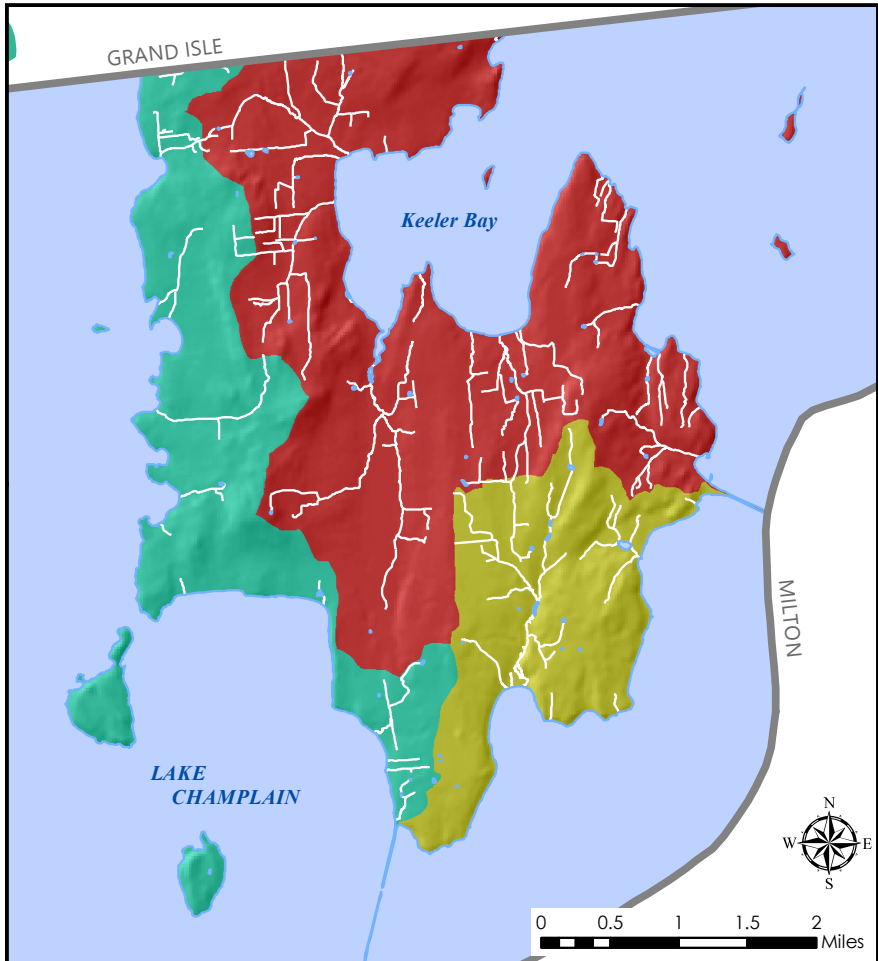
Prepared by:
Northwest RPC
75 Fairfield Street,
St. Albans, VT 05478
802-524-5958
www.nrpcvt.com

For Planning Purposes Only.


Located:
Z:\NRPC-GIS\Projects\County\
GrandIsle\SouthHero\TownPlan



WATER RESOURCES: Northern Lake Champlain Drainage Basin



 Lake Champlain
Direct - Main Lake

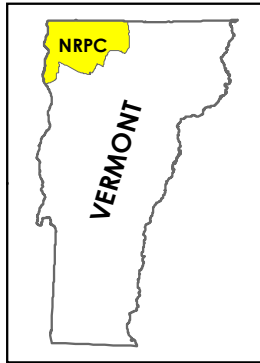
 Lake Champlain
Direct - Northeast Arm

 Malletts Bay






Wind

South Hero, Vermont Act 174 The Energy Development Improvement Act of 2016

This map and the corresponding data is intended to be used to inform energy planning efforts by municipalities and regions. This may also be used for conceptual planning or initial site identification by those interested in developing renewable energy infrastructure. The maps do **NOT** take the place of site-specific investigation for a proposed facility and cannot be used of as "siting maps."

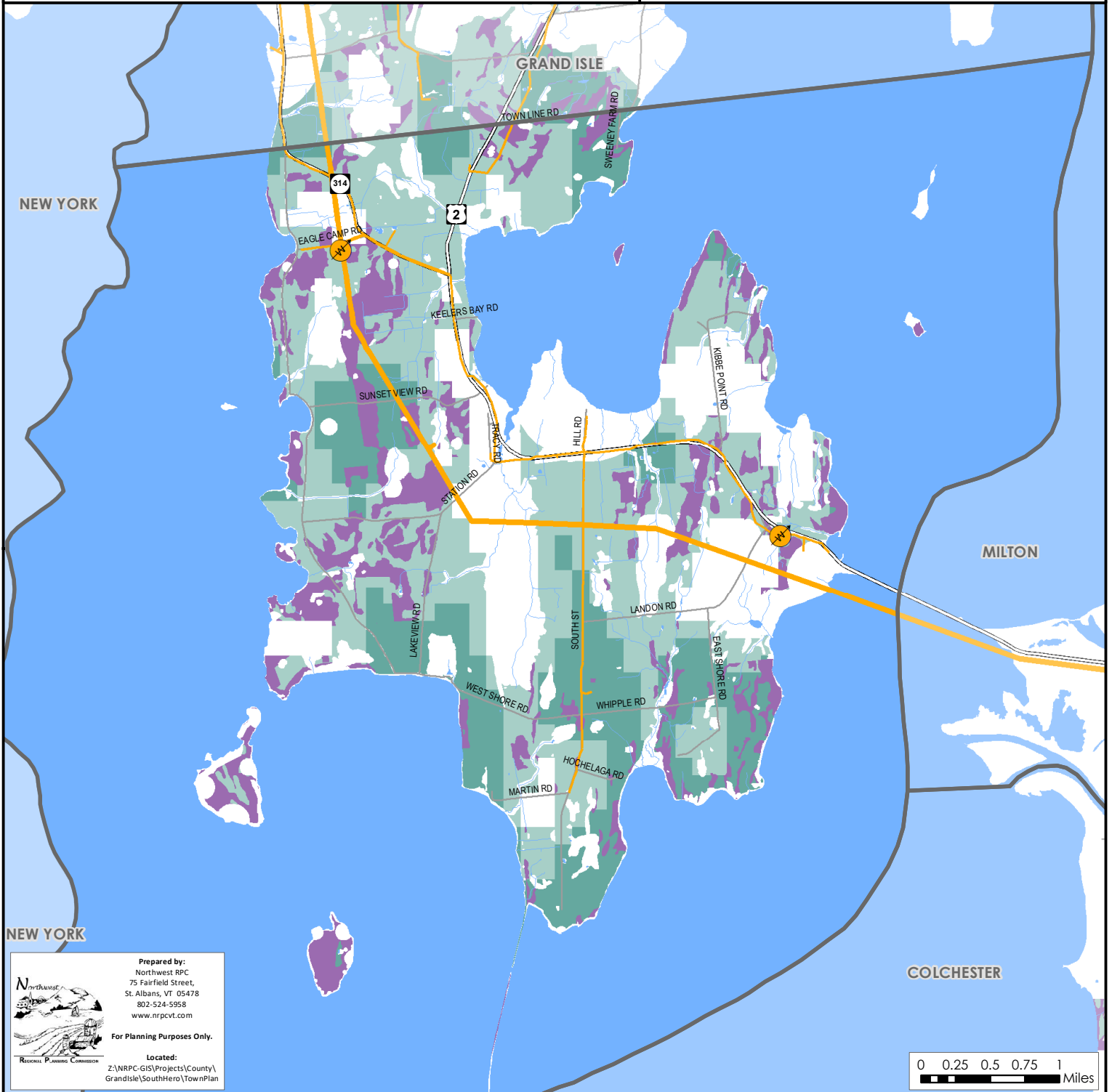


Legend

-  Substation
-  3 Phase Power Line
-  Transmission Line
-  **Prime Wind**
Areas of high wind potential and no known constraints.
Darker areas have higher wind speeds.
-  **Base Wind**
Areas of high wind potential and a presence of possible constraints.
Darker areas have higher wind speeds.

Sources: VCGI

Disclaimer: The accuracy of information presented is determined by its sources. Errors and omissions may exist. The Northwest RPC is not responsible for these. Questions of on-the-ground location can be resolved by site inspections and/or surveys by a registered surveyor. This map is not sufficient for delineation of features on-the-ground. This map identifies the presence of features, and may indicate relationships between features, but is not a replacement for surveyed information or engineering studies.



Prepared by:
Northwest RPC
75 Fairfield Street,
St. Albans, VT 05478
802-524-5958
www.nrpcvt.com

For Planning Purposes Only.

Located:
Z:\NRPC-GIS\Projects\County\
GrandIsle\SouthHero\TownPlan

