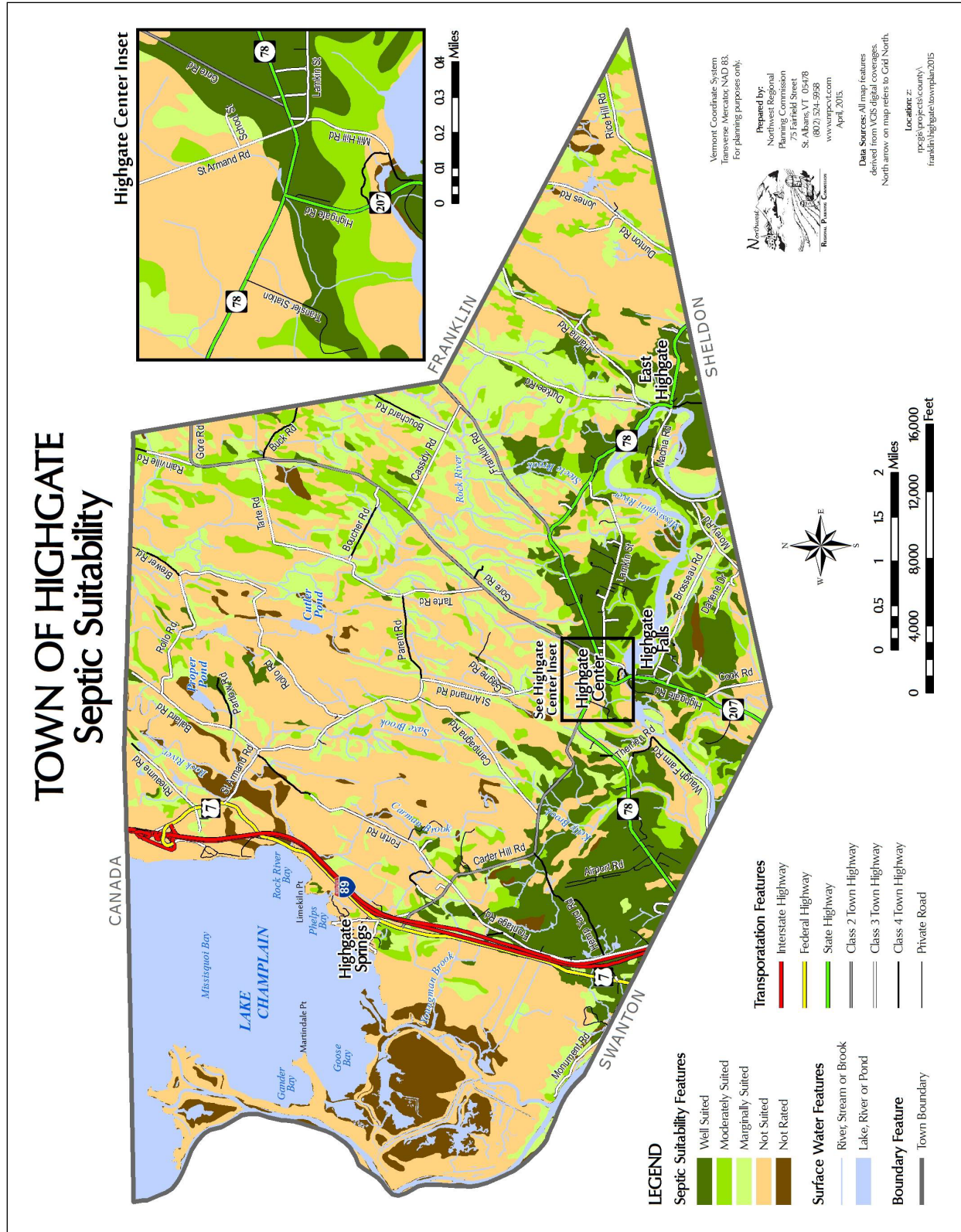
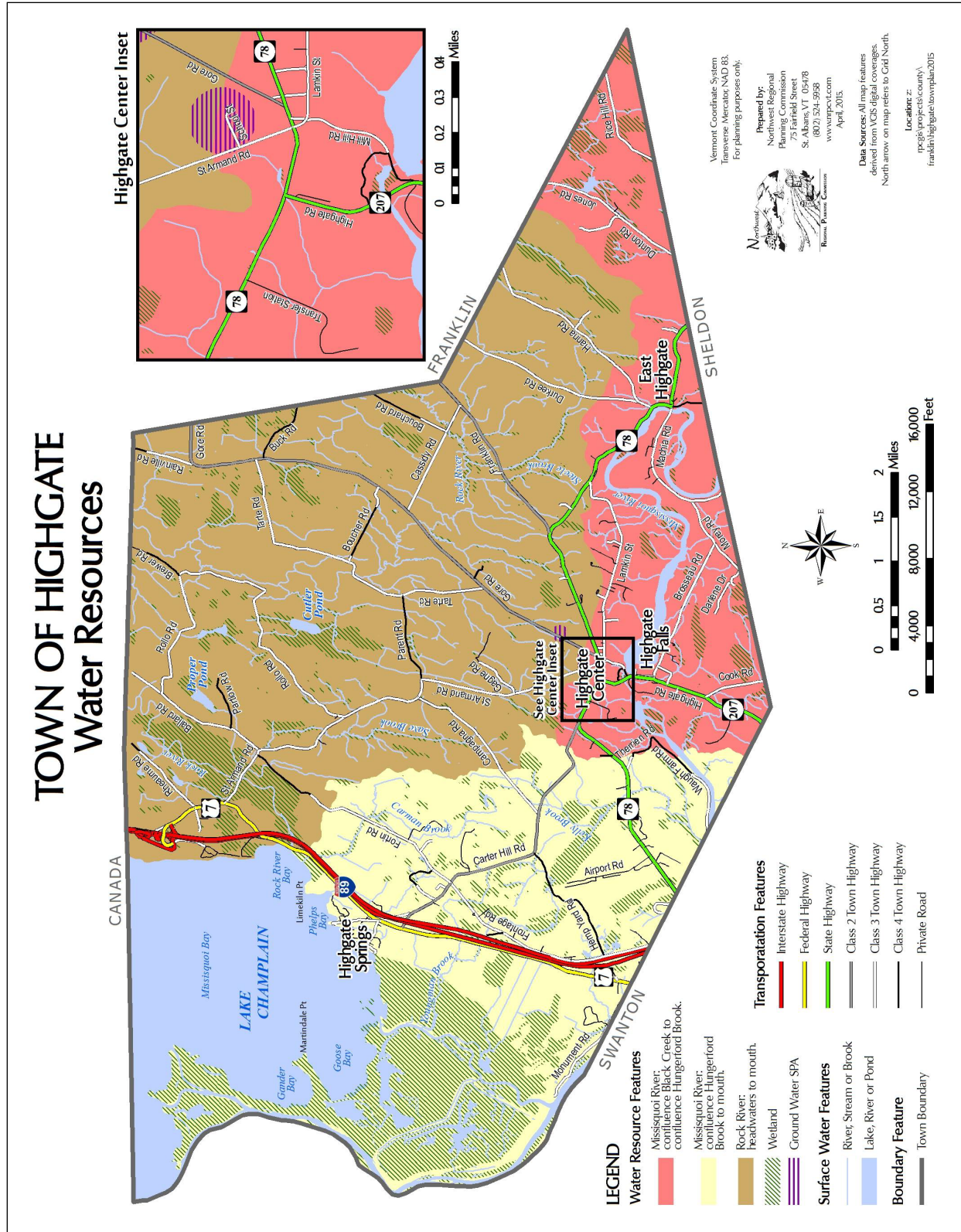


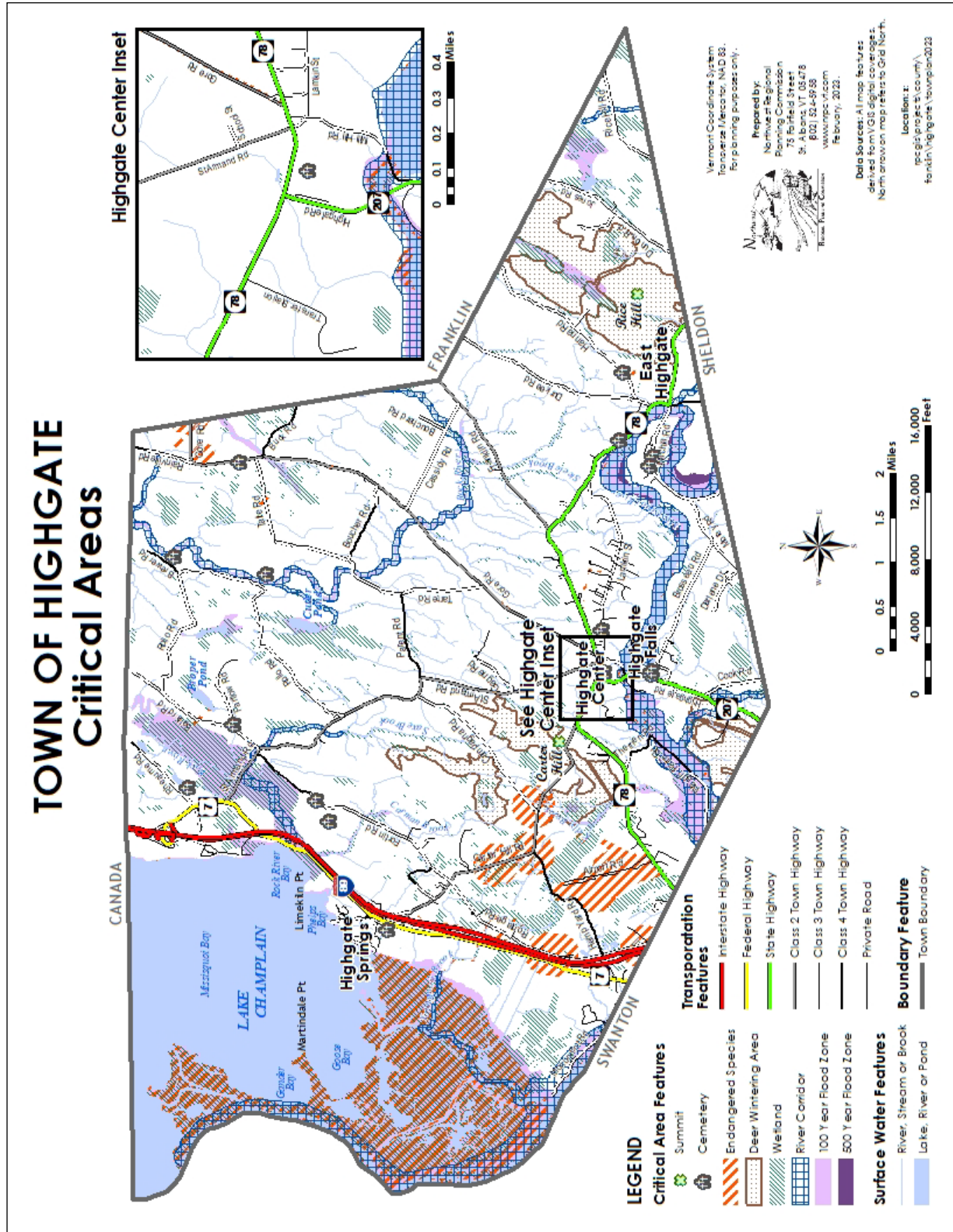
Map 4.1 Septic Suitability



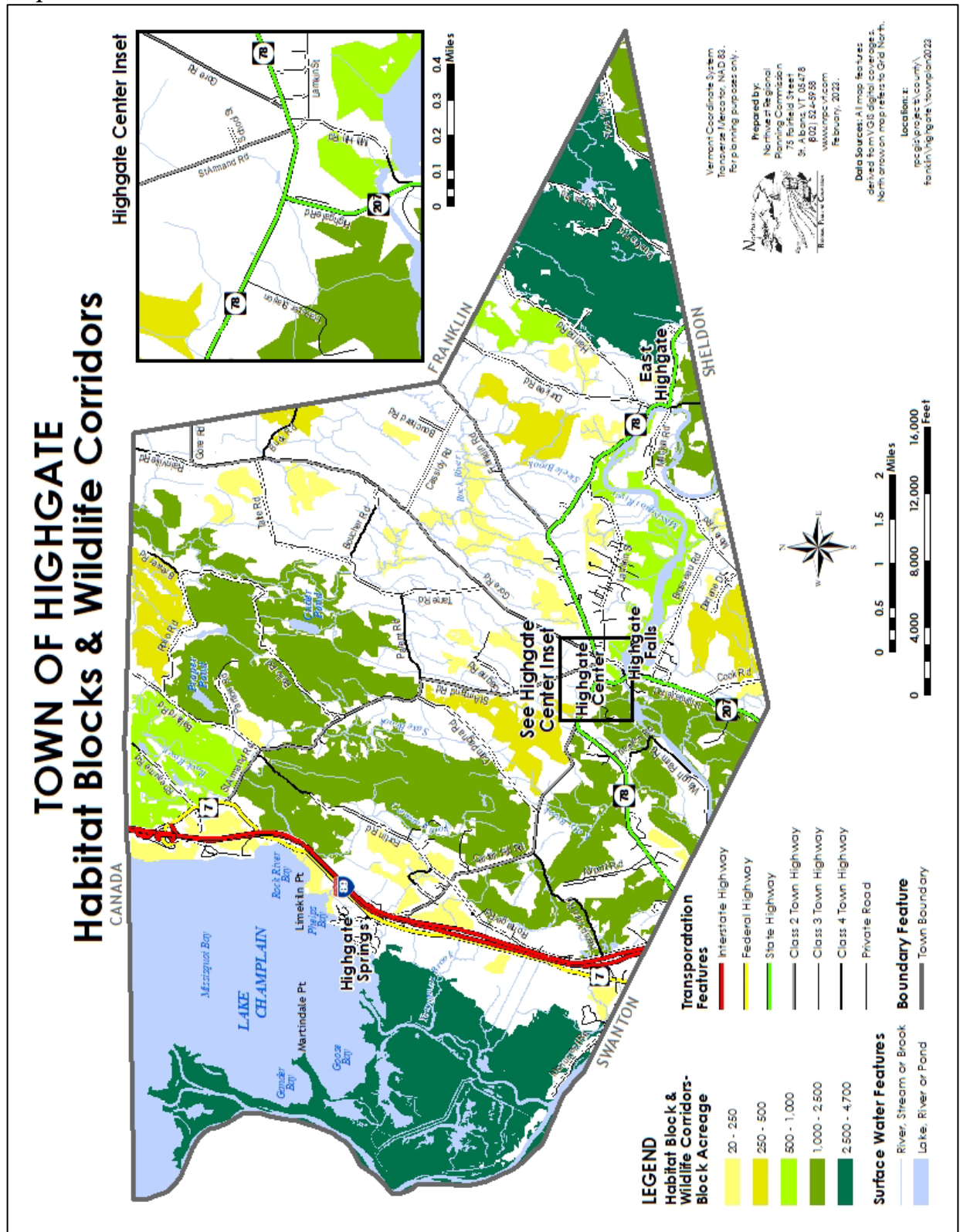
Map 4.2 Water Resources



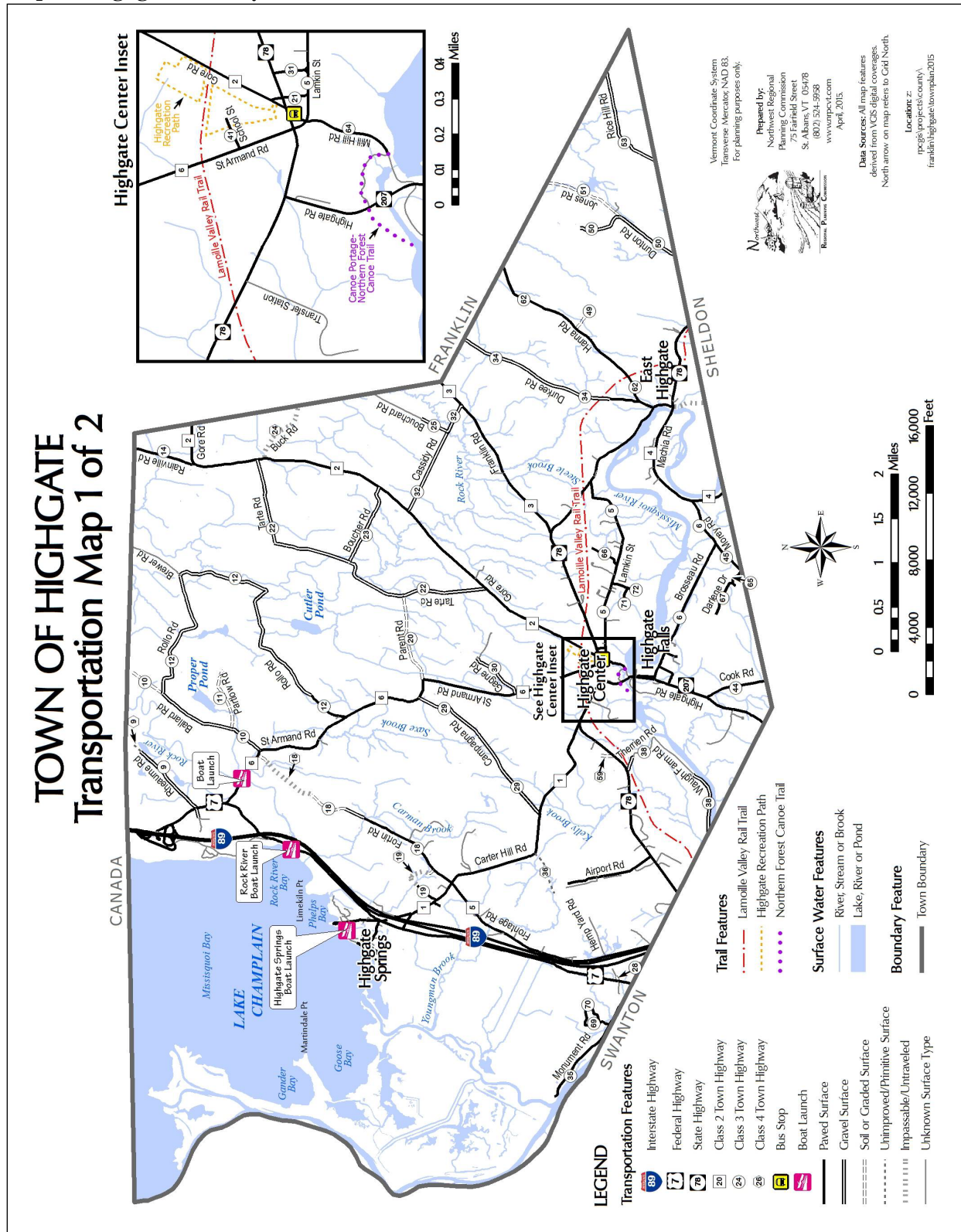
Map 4.3 Critical Areas



Map 4.4 Habitat Blocks & Wildlife Corridors

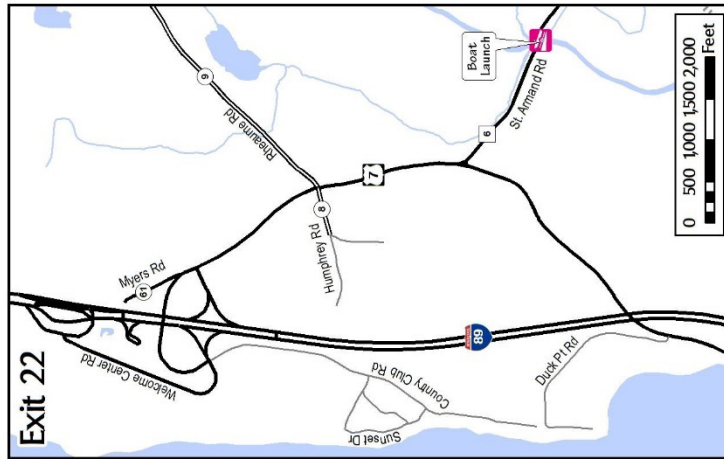
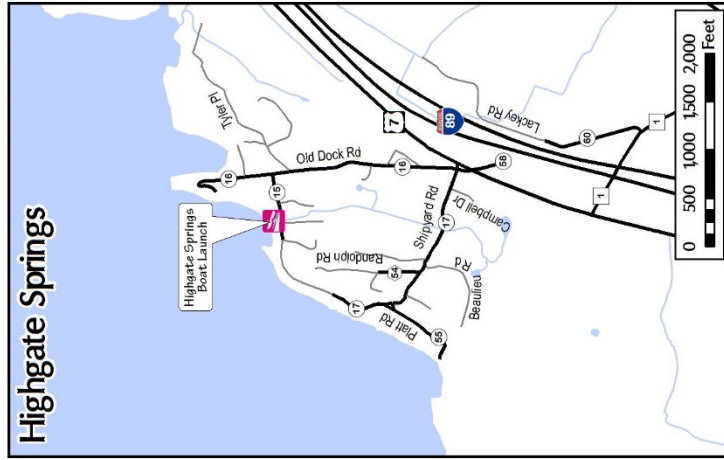
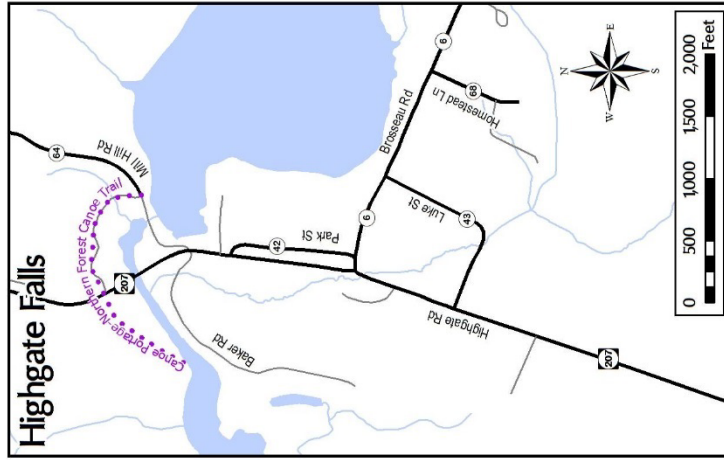


Map 6.1 Highgate Road System



Map 6.2 Transportation Areas of Importance

TOWN OF HIGHGATE Transportation Map 2 of 2



LEGEND

Transportation Features

- 89 Interstate Highway
- 7 Federal Highway
- 76 State Highway
- 20 Class 2 Town Highway
- 24 Class 3 Town Highway
- 28 Class 4 Town Highway

Trail Features

- Lamolille Valley Rail Trail
- Highgate Recreation Path
- Northern Forest Canoe Trail

Surface Water Features

- River, Stream or Brook
- Lake, River or Pond

Other Features:

- Bus Stop
- Boat Launch
- Paved Surface
- Gravel Surface
- Soil or Graded Surface
- Unimproved/Primitive Surface
- Impassable/Untraveled
- Unknown Surface Type

Scale: 0 500 1000 1500 2000 Feet

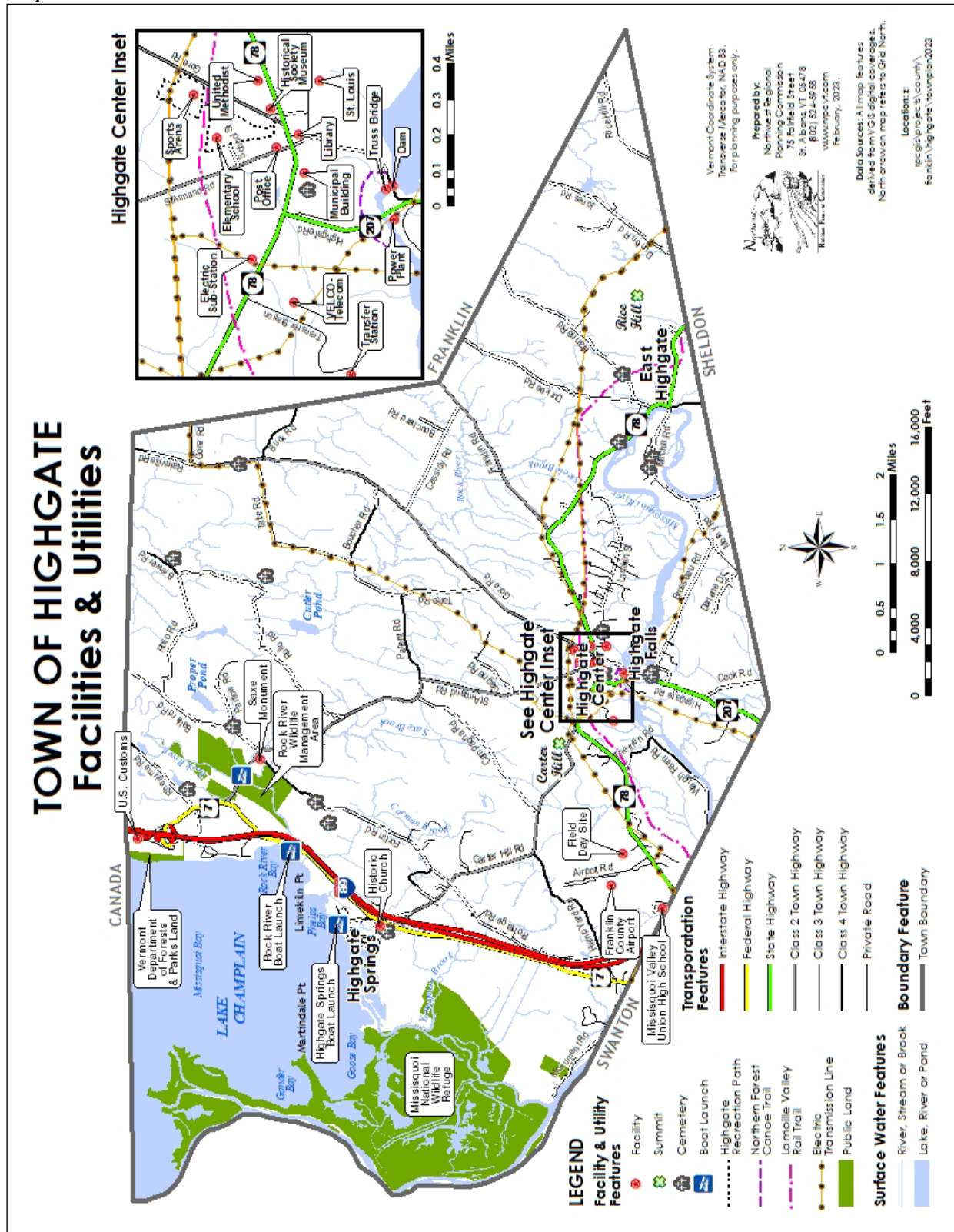
North Arrow: N, S, E, W

Prepared by: Northwest Regional Planning Commission, 100 Park St., Shelburne, VT 05478, (802) 244-9968, www.nwrpc.com, April, 2015.

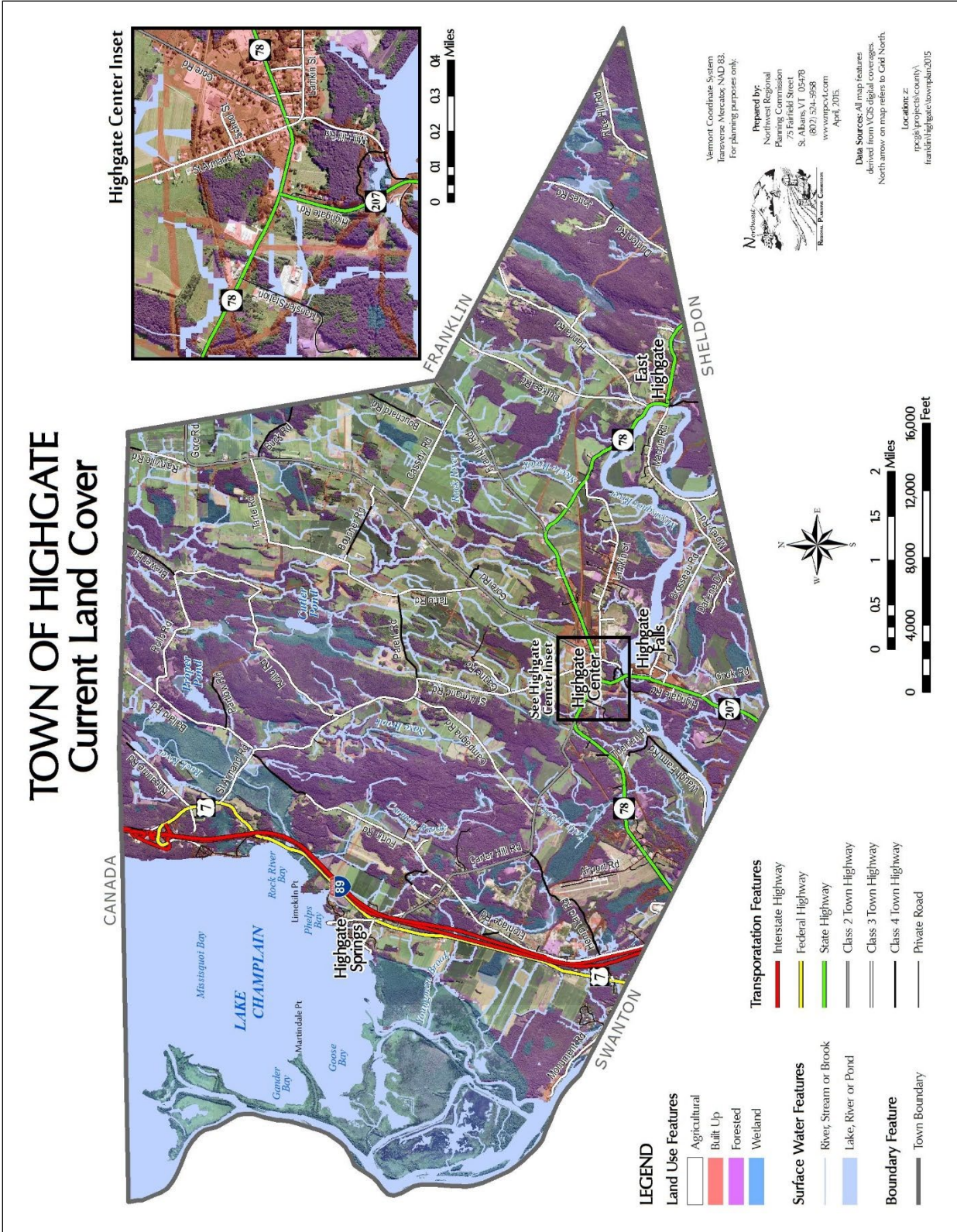
Data Sources: All map features derived from GIS digital coverages. North arrow on map refers to Grid North.

Location: pps://projecsc.com/vt/franklin/highgate-townplan2015

Map 7.1 Facilities and Utilities

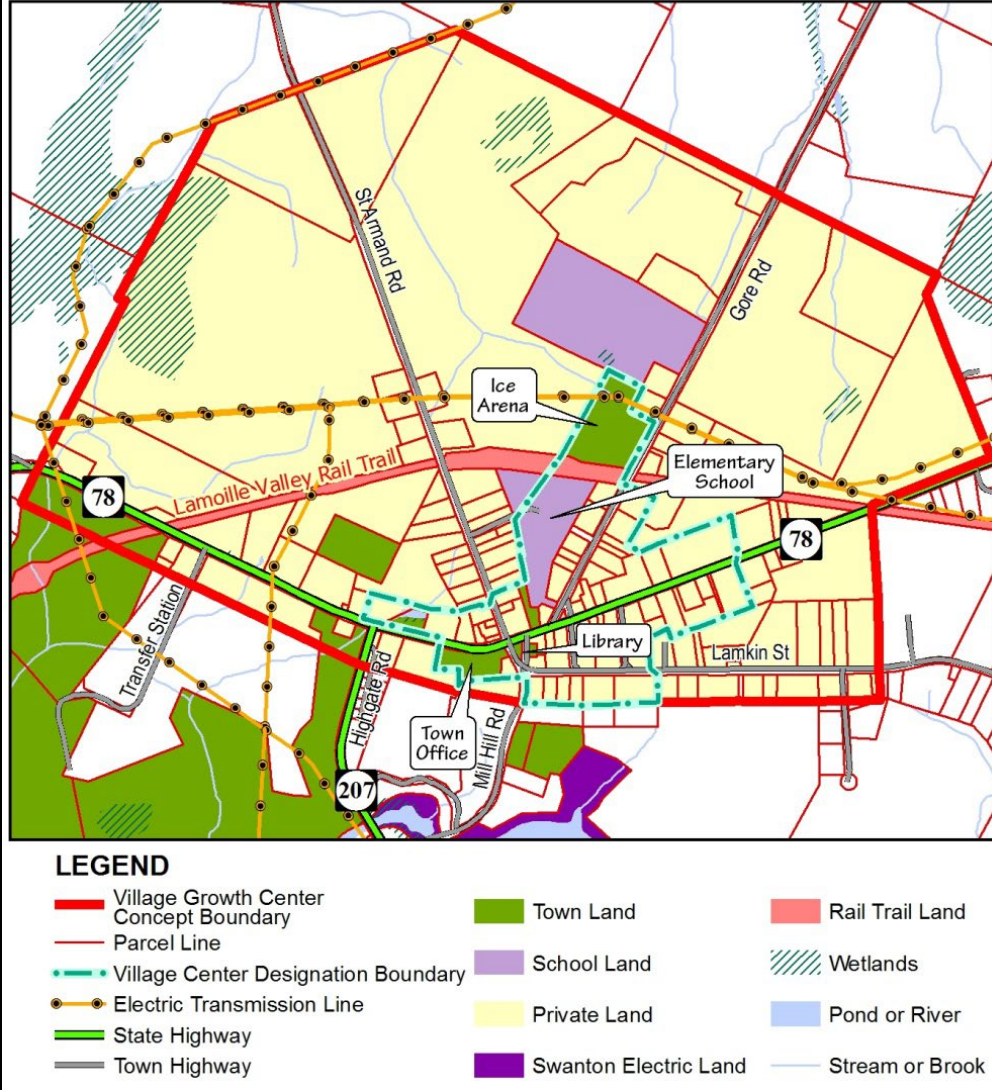


Map 9.1 Land Use and Land Cover of Highgate as of 2003

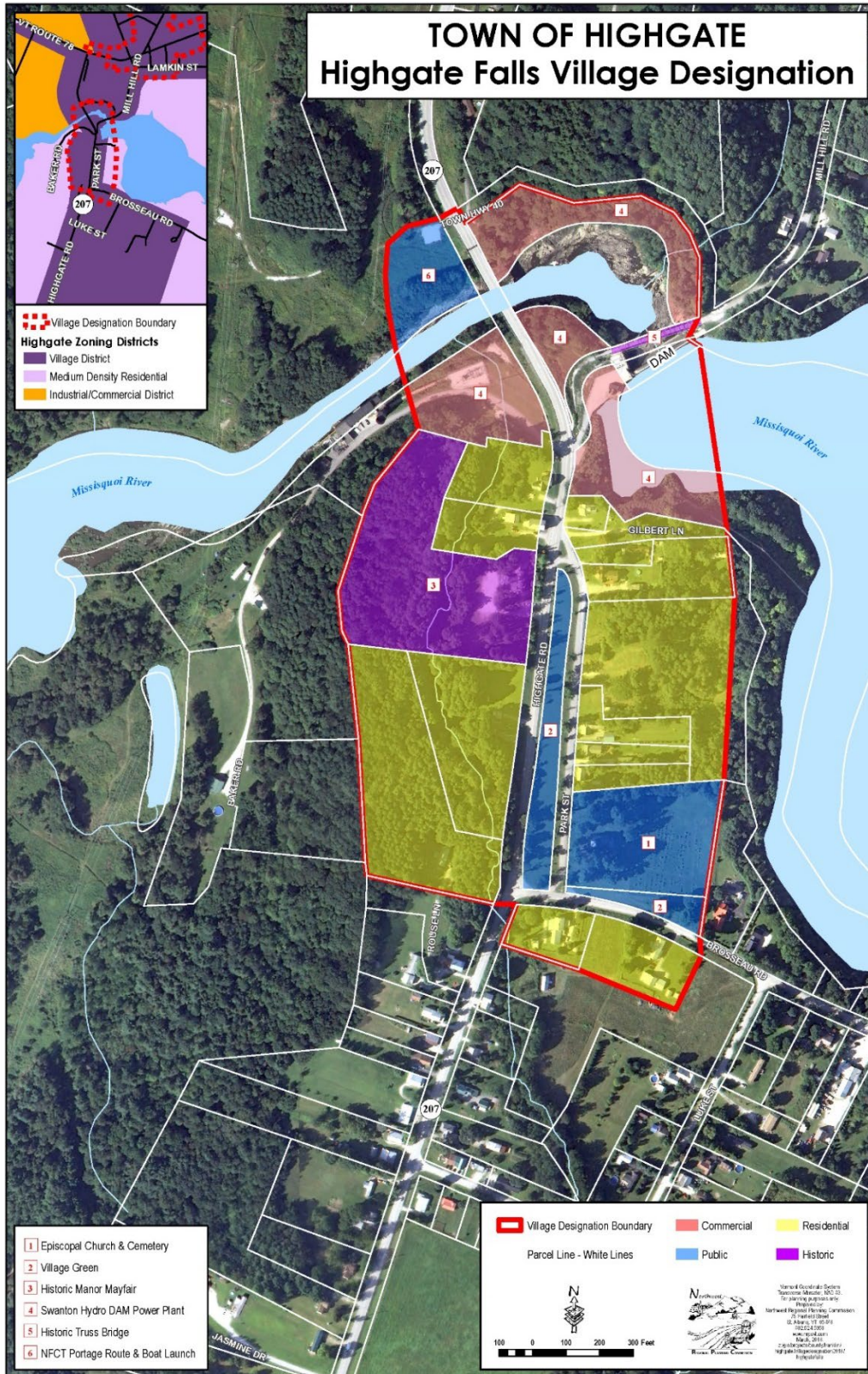


Map 9.2 Village Growth Center Concept Map and designated Village Center

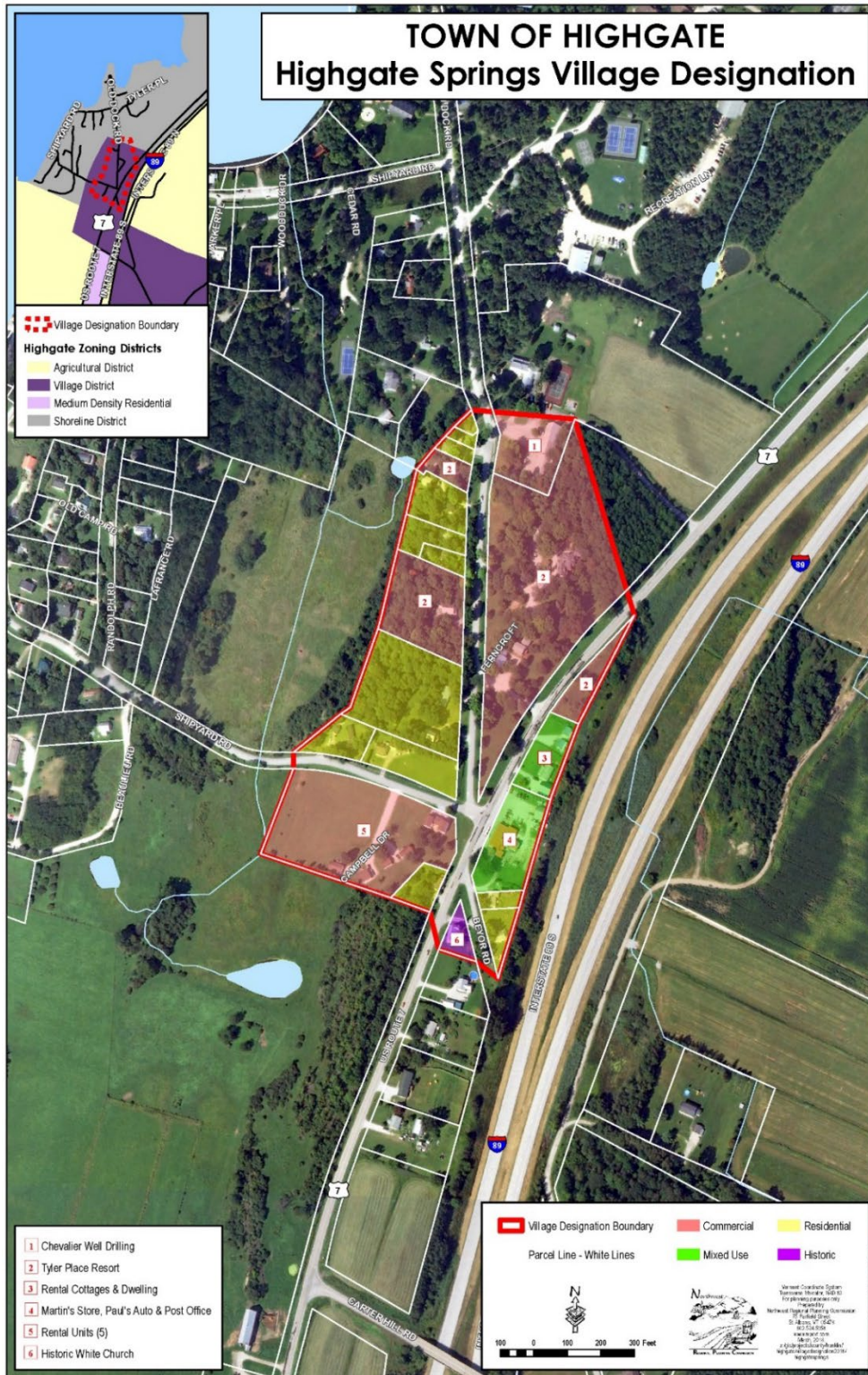
Village Growth Center Concept Highgate Center



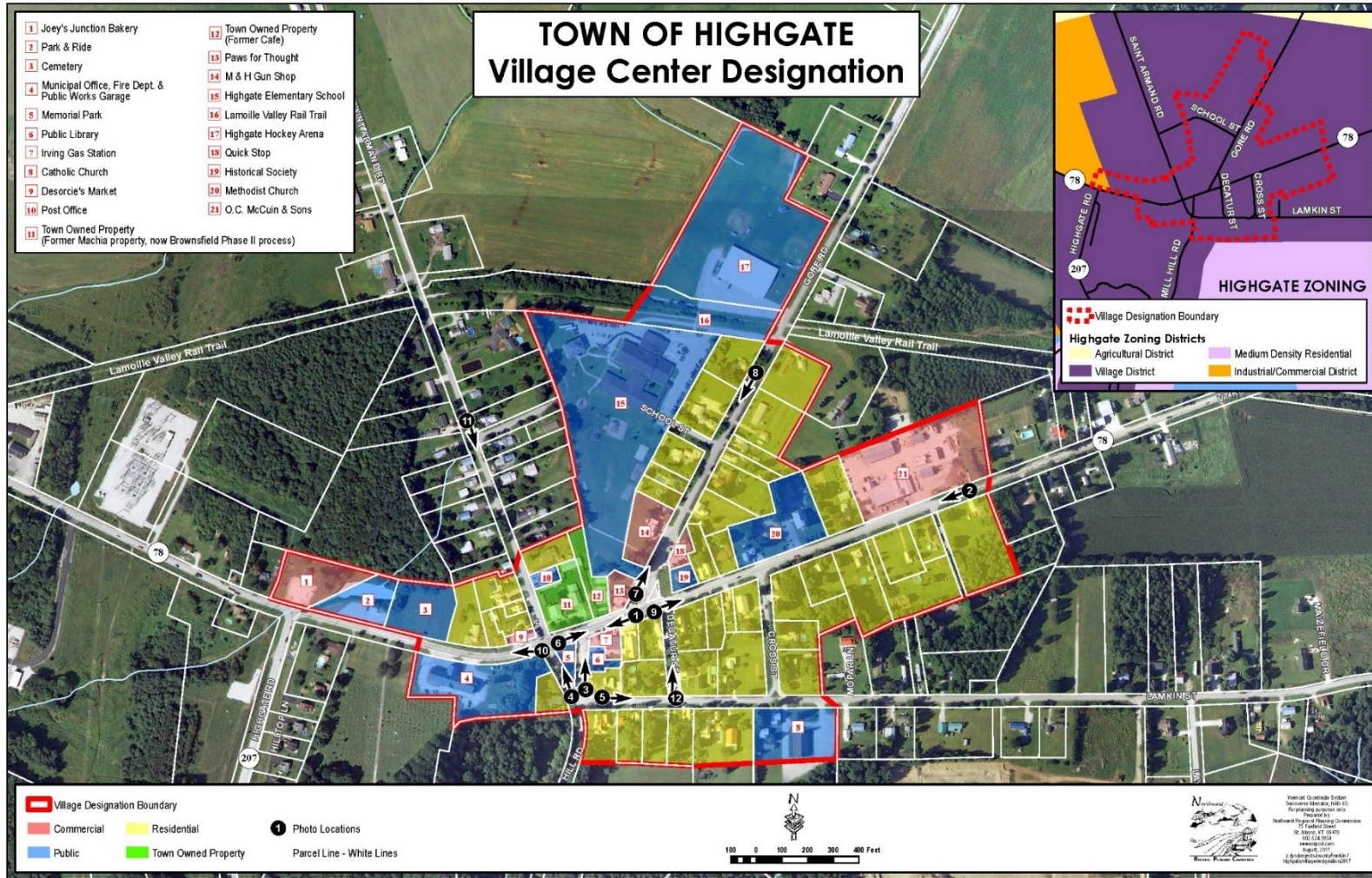
Map 9.3 Highgate Falls Village Designation



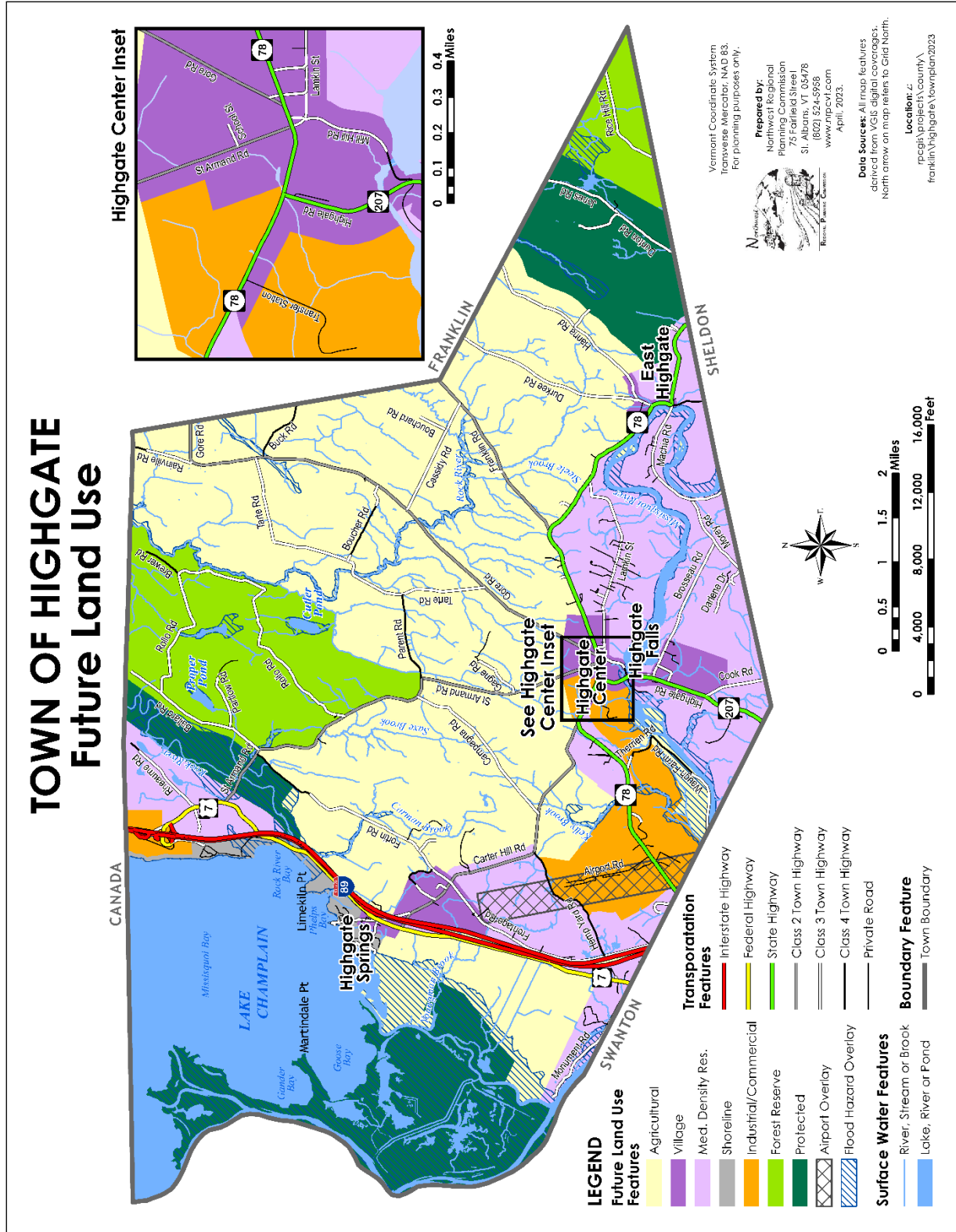
Map 9.4 Highgate Springs Village Designation

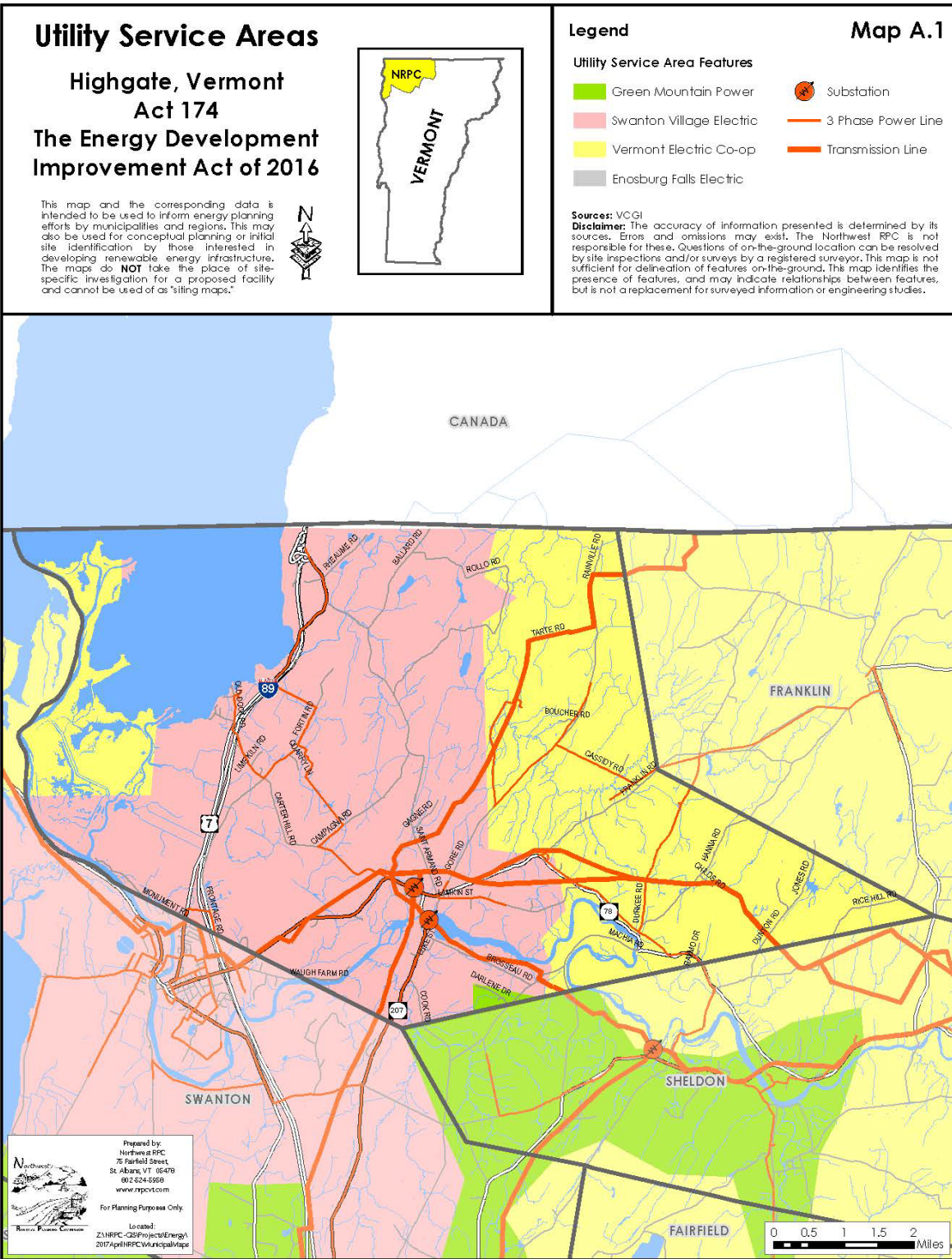


Map 9.5 Highgate Center Village Center Designation



Map 9.6 Proposed Land Use Districts

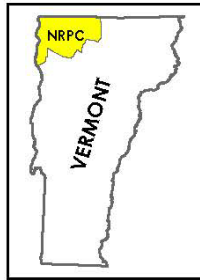








Transmission & 3 Phase Power Infrastructure

Highgate, Vermont Act 174 The Energy Development Improvement Act of 2016

This map and the corresponding data is intended to be used to inform energy planning efforts by municipalities and regions. This may also be used for conceptual planning or initial site identification by those interested in developing renewable energy infrastructure. The maps do **NOT** take the place of site-specific investigation for a proposed facility and cannot be used as "siting maps."



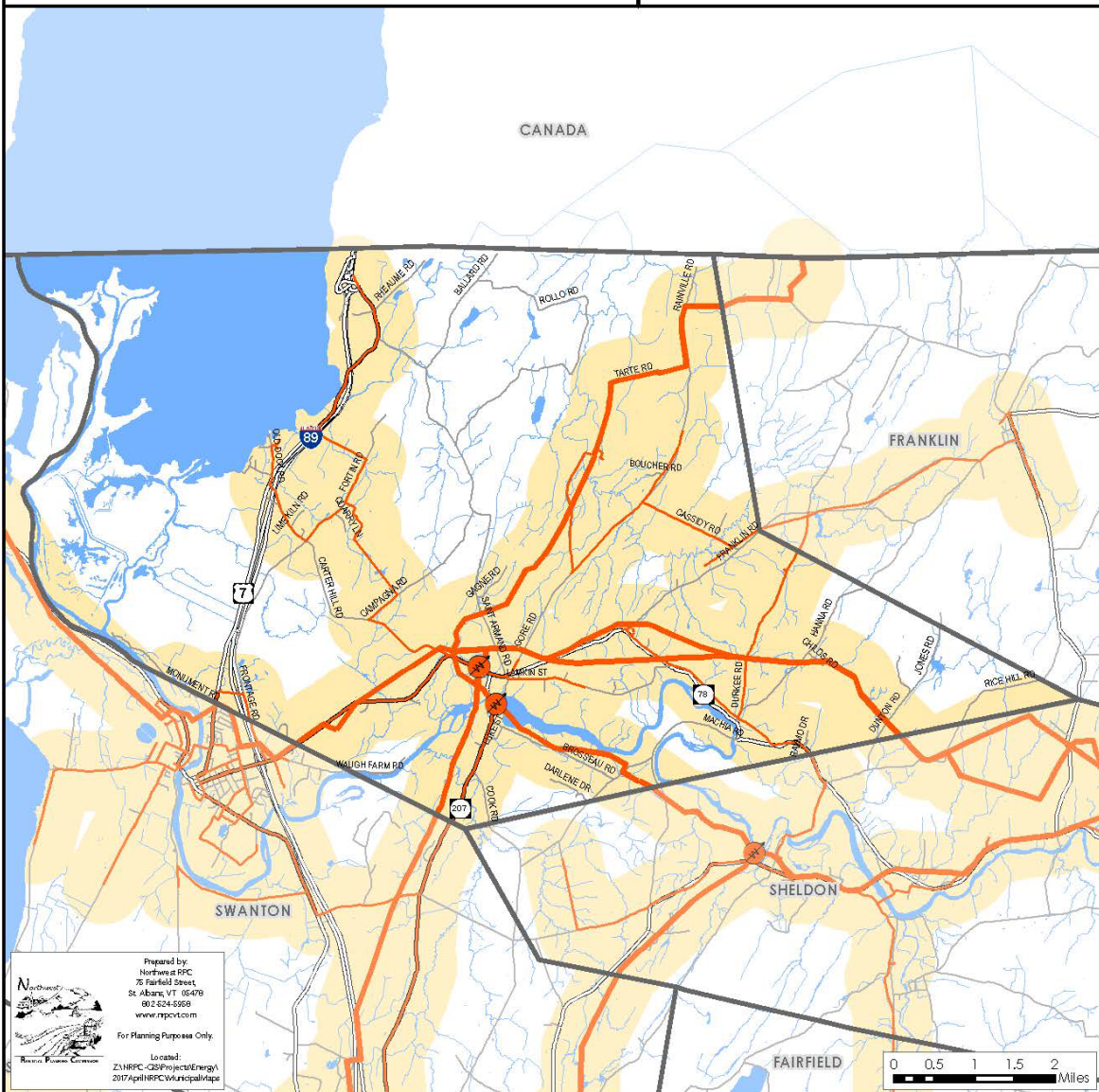
Legend

-  Substation
-  3 Phase Power Line
-  Transmission Line
-  1/2 Mile Buffer (3 Phase Power Line & Transmission Line)

Map A.2

Sources: VCGI

Disclaimer: The accuracy of information presented is determined by its sources. Errors and omissions may exist. The Northwest RPC is not responsible for these. Questions of on-the-ground location can be resolved by site inspections and/or surveys by a registered surveyor. This map is not sufficient for delineation of features on-the-ground. This map identifies the presence of features, and may indicate relationships between features, but is not a replacement for surveyed information or engineering studies.



Prepared by:
Northwest RPC
76 Fairfield Street
St Albans, VT 05478
001-624-3988
www.nrpcvt.com

For Planning Purposes Only.

Located:
Z:\NRPC-35\Projects\Energy\2017\April\RPC\municipal\tpa

Natural Gas Lines

Highgate, Vermont Act 174 The Energy Development Improvement Act of 2016

This map and the corresponding data is intended to be used to inform energy planning efforts by municipalities and regions. This may also be used for conceptual planning or initial site identification by those interested in developing renewable energy infrastructure. The maps do **NOT** take the place of site-specific investigation for a proposed facility and cannot be used of as "siting maps."



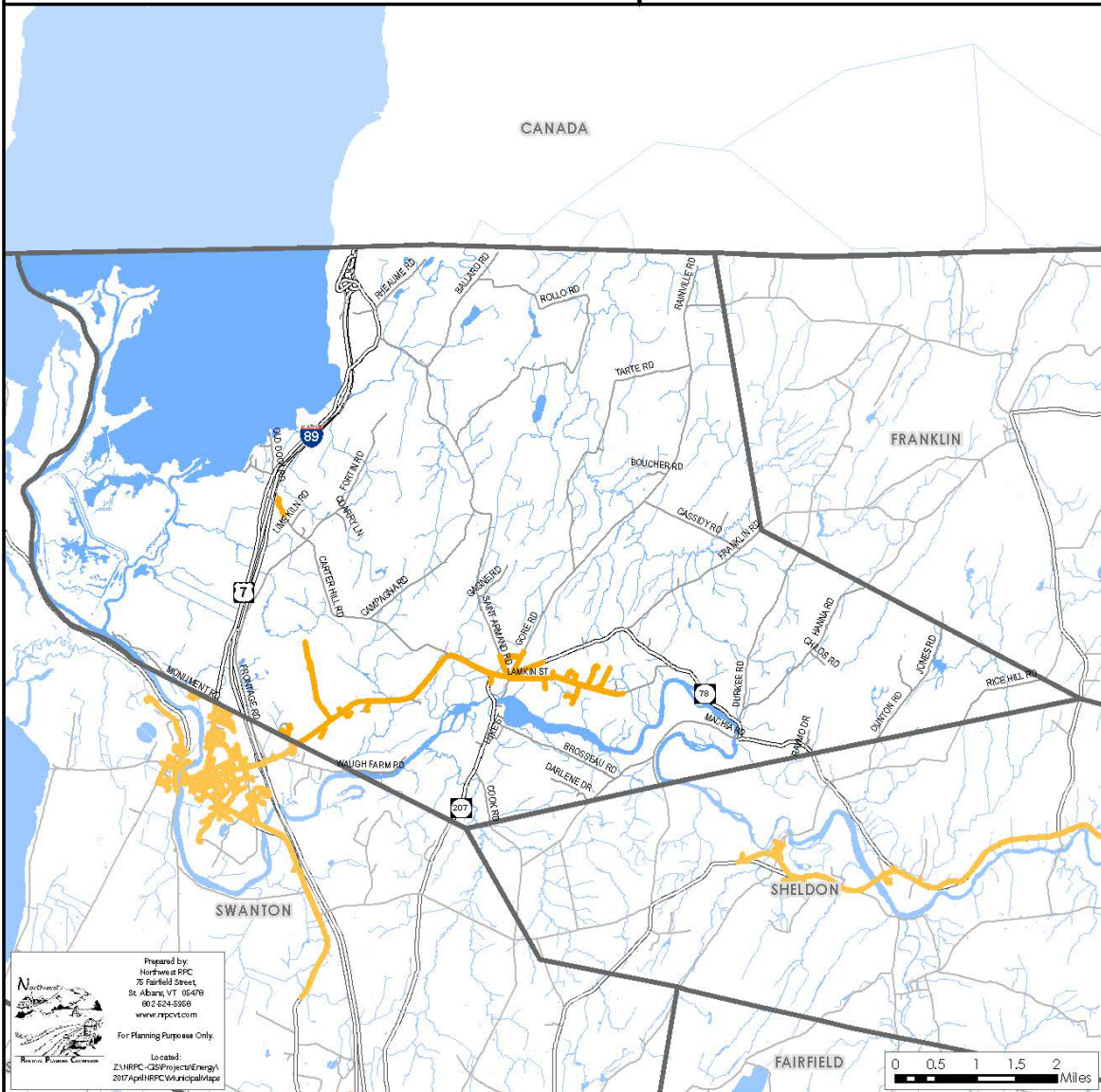
Map A.3

Legend

Natural Gas Line

Sources: VCGI

Disclaimer: The accuracy of information presented is determined by its sources. Errors and omissions may exist. The Northwest RPC is not responsible for these. Questions of on-the-ground location can be resolved by site inspections and/or surveys by a registered surveyor. This map is not sufficient for delineation of features on-the-ground. This map identifies the presence of features, and may indicate relationships between features, but is not a replacement for surveyed information or engineering studies.



Prepared by:
Northwest RPC
76 Fairfield Street
St Albans, VT 05478
012-624-3988
www.nrpc.com

For Planning Purposes Only.

Located:
2:\NRPC-35\Projects\Energy\2017\April\RPC\Municipal\Map

Existing Generation Facilities

Highgate, Vermont Act 174 The Energy Development Improvement Act of 2016

This map and the corresponding data is intended to be used to inform energy planning efforts by municipalities and regions. This may also be used for conceptual planning or initial site identification by those interested in developing renewable energy infrastructure. The maps do **NOT** take the place of site-specific investigation for a proposed facility and cannot be used as "siting maps."



Legend

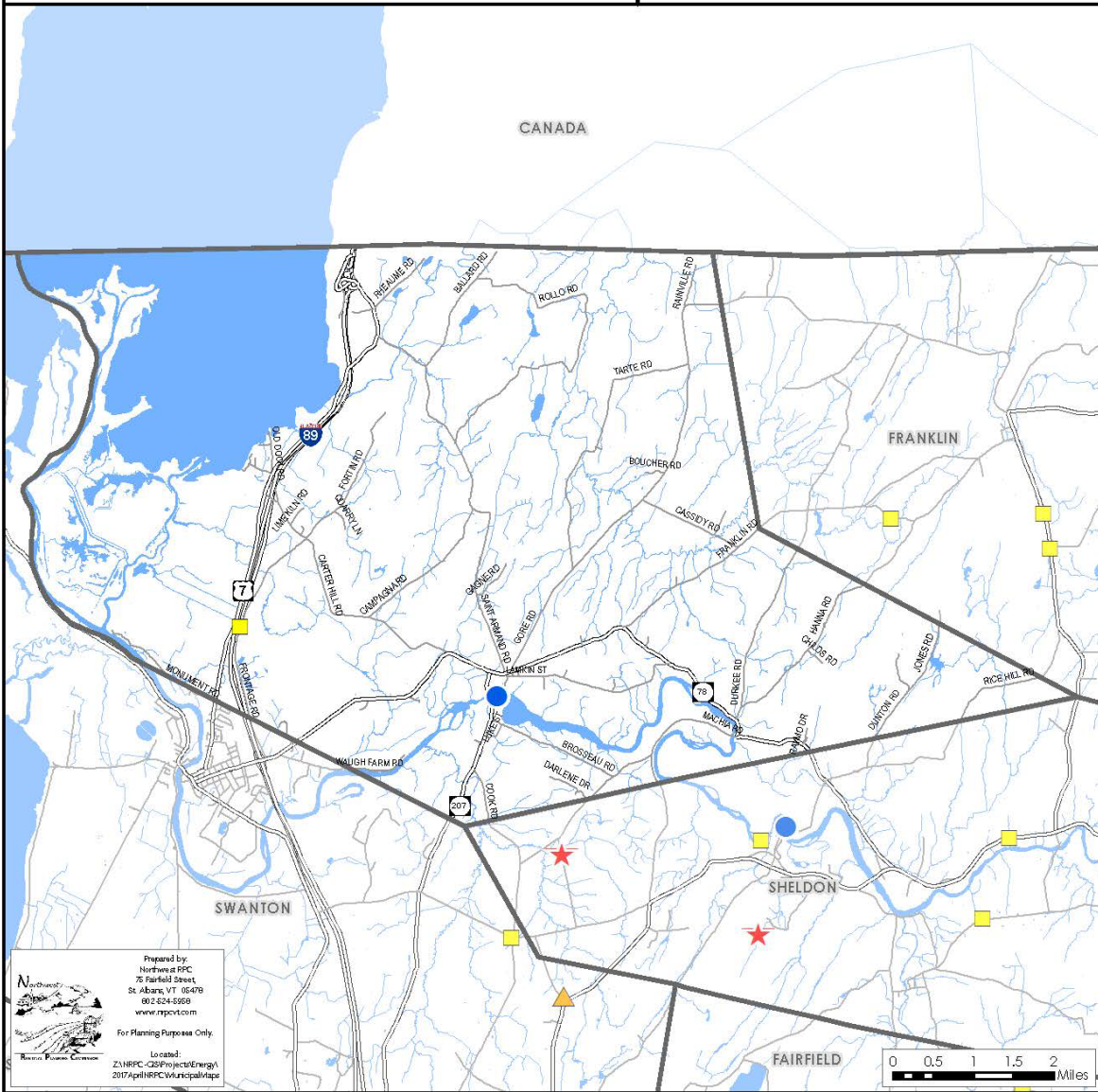
- ★ Biomass Facility
- Hydro Facility
- Solar Facility
- ▲ Wind Facility

Map A.4

Note: Only generators 15kW are shown on the map. A full list of all generators is available.

Sources: VCGI

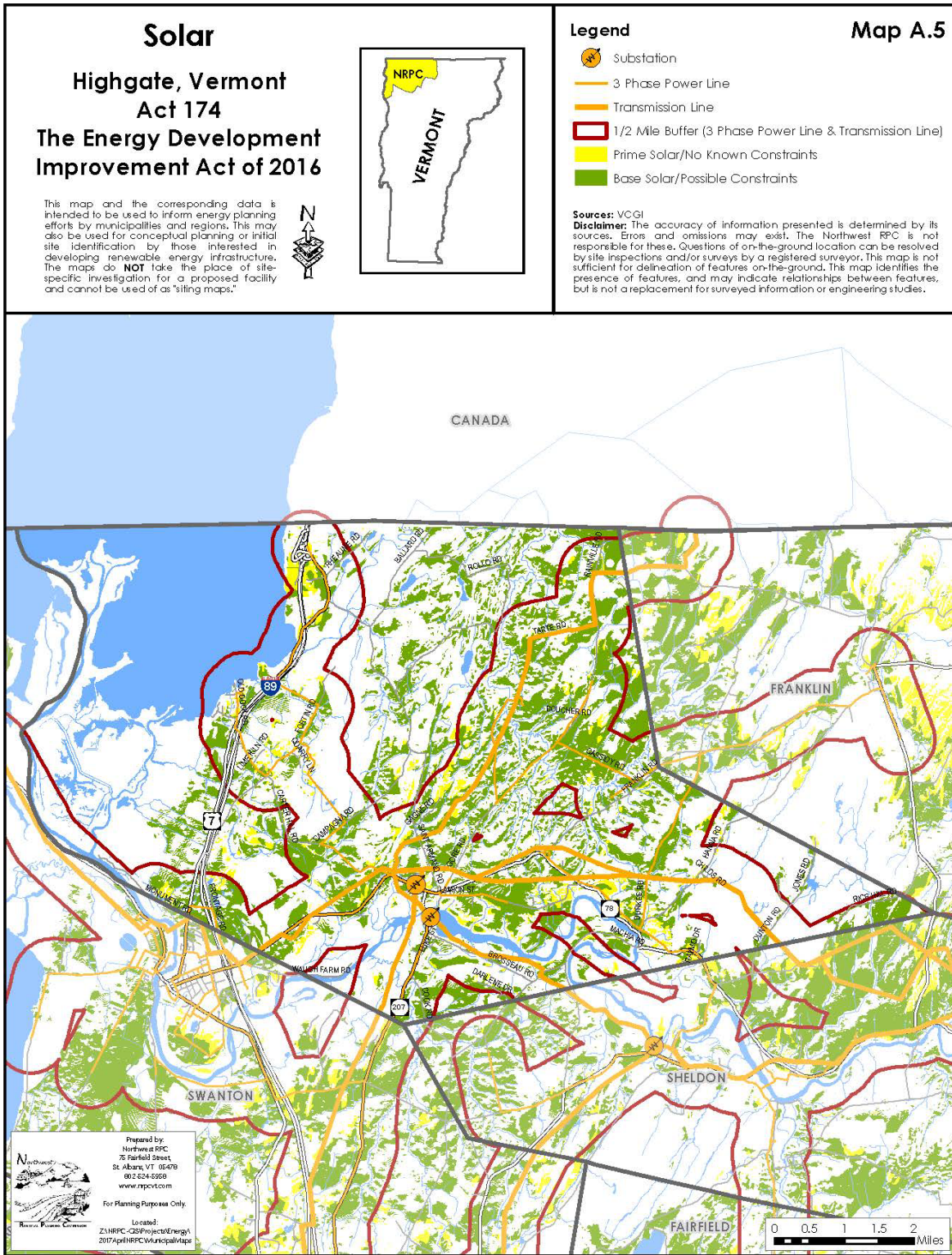
Disclaimer: The accuracy of information presented is determined by its sources. Errors and omissions may exist. The Northwest RPC is not responsible for these. Questions of on-the-ground location can be resolved by site inspections and/or surveys by a registered surveyor. This map is not sufficient for delineation of features on-the-ground. This map identifies the presence of features, and may indicate relationships between features, but is not a replacement for surveyed information or engineering studies.

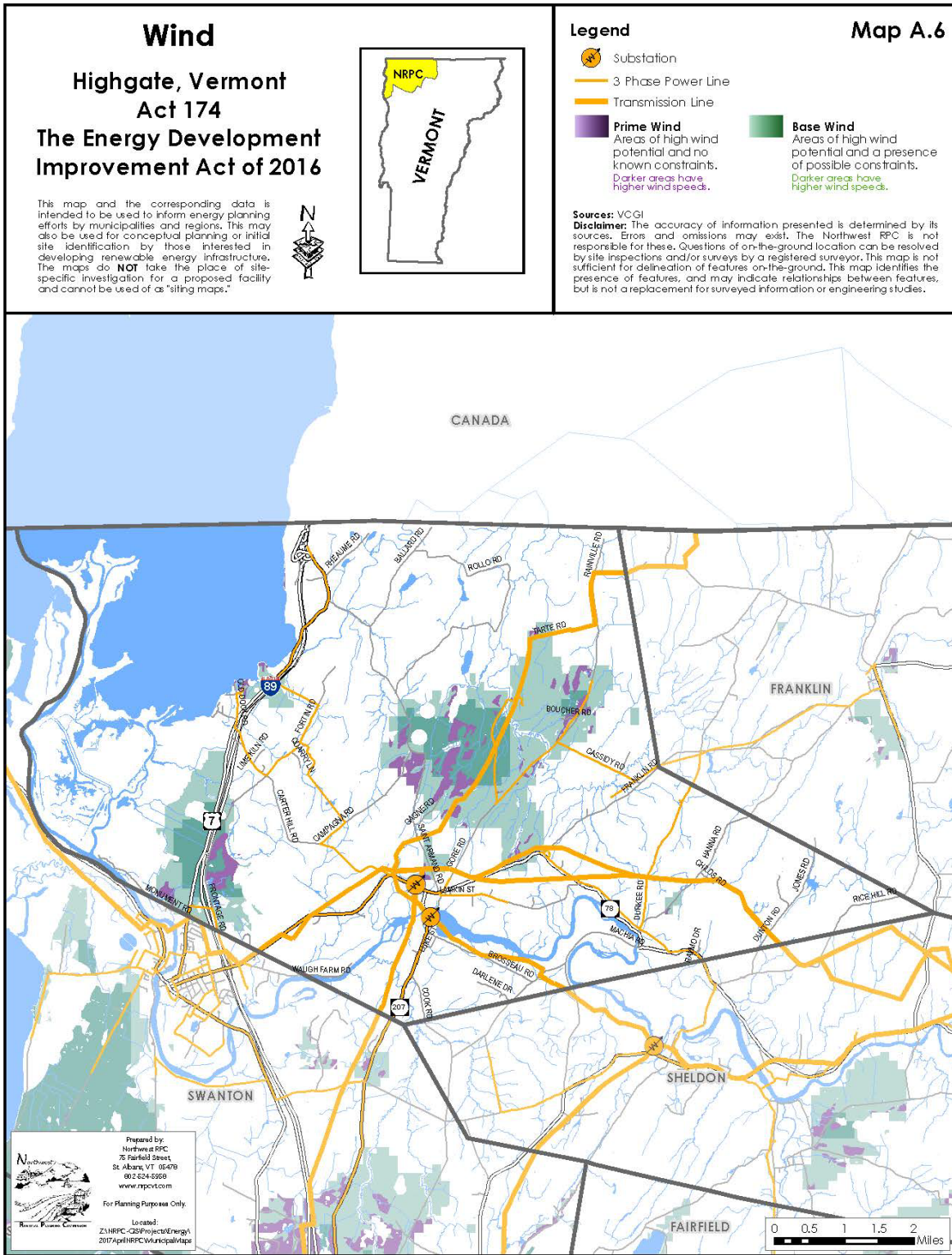


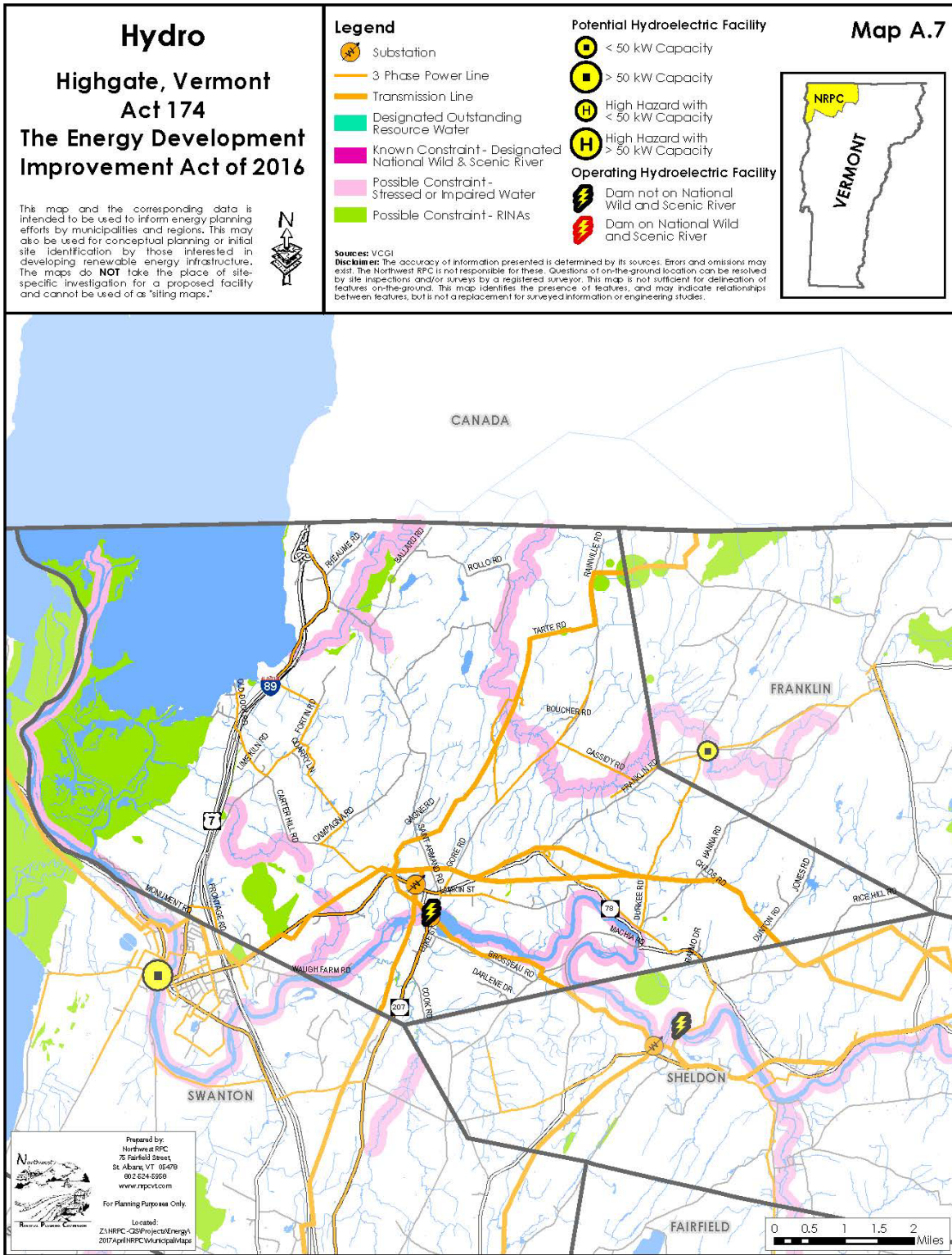
Prepared by:
Northwest RPC
76 Fairfield Street
St Albans, VT 05478
012-624-3988
www.nwrpc.com

For Planning Purposes Only.

Located:
2\NRPC-35\Projects\Energy\
2017Apr\NRPC\Municipal\Map



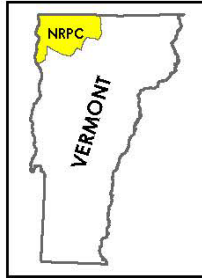




Woody Biomass

Highgate, Vermont Act 174 The Energy Development Improvement Act of 2016

This map and the corresponding data is intended to be used to inform energy planning efforts by municipalities and regions. This may also be used for conceptual planning or initial site identification by those interested in developing renewable energy infrastructure. The maps do **NOT** take the place of site-specific investigation for a proposed facility and cannot be used as "siting maps."



Legend

- Biomass System
- Cow Power
- Substation
- 3 Phase Power Line
- Transmission Line
- Prime Woody Biomass/No Known Constraints
- Base Woody Biomass/Possible Constraints

Map A.8

Sources: VCGI

Disclaimer: The accuracy of information presented is determined by its sources. Errors and omissions may exist. The Northwest RPC is not responsible for these. Questions of on-the-ground location can be resolved by site inspections and/or surveys by a registered surveyor. This map is not sufficient for delineation of features on-the-ground. This map identifies the presence of features, and may indicate relationships between features, but is not a replacement for surveyed information or engineering studies.



Prepared by:
Northwest RPC
76 Fairfield Street
St Albans, VT 05478
001-524-3988
www.nwrpc.com

For Planning Purposes Only.

Located:
2, NRPC - GIS/Projects/Energy/
2017AprilRPCMunicipalMaps

