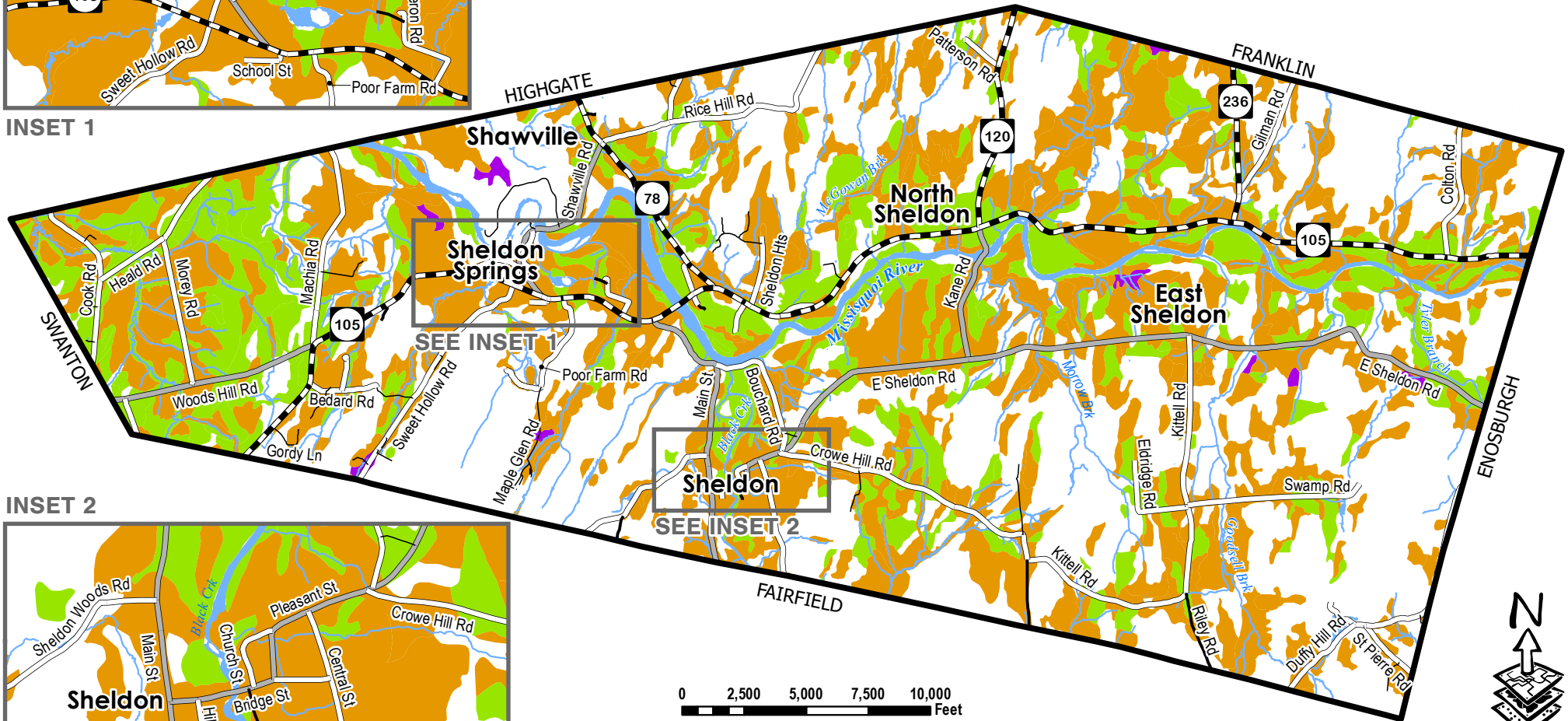


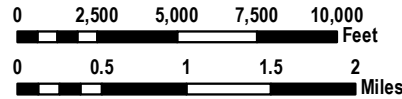
# TOWN OF SHELDON Agricultural Soils



INSET 1



INSET 2



## LEGEND

### Agricultural Soil Features

- Prime Agricultural Soils
- Statewide Importance Soils
- Local Soils

### Transportation Features

- State Highway
- Class 2 Town Highway
- Class 3 Town Highway
- Class 4 Town Highway
- Private Road

### Surface Water Features

- River, Stream or Brook
- Pond or River

### Other Feature

- Town Boundary

For planning purposes only.

**Data Sources:**  
All map features derived from Vermont Open Geoportals Data (<https://geodata.vermont.gov>).  
North arrow on map refers to Grid North.

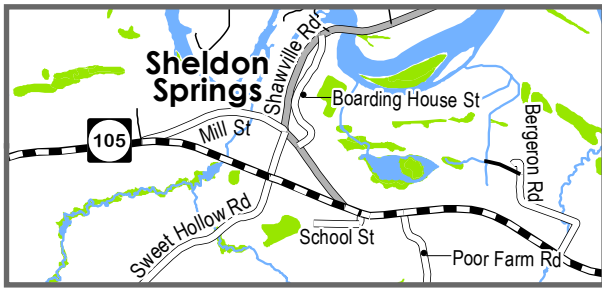
**Located:**  
z:gis/projects/county/franklin/sheldon/townplan/2024

**Created:**  
January - 2024

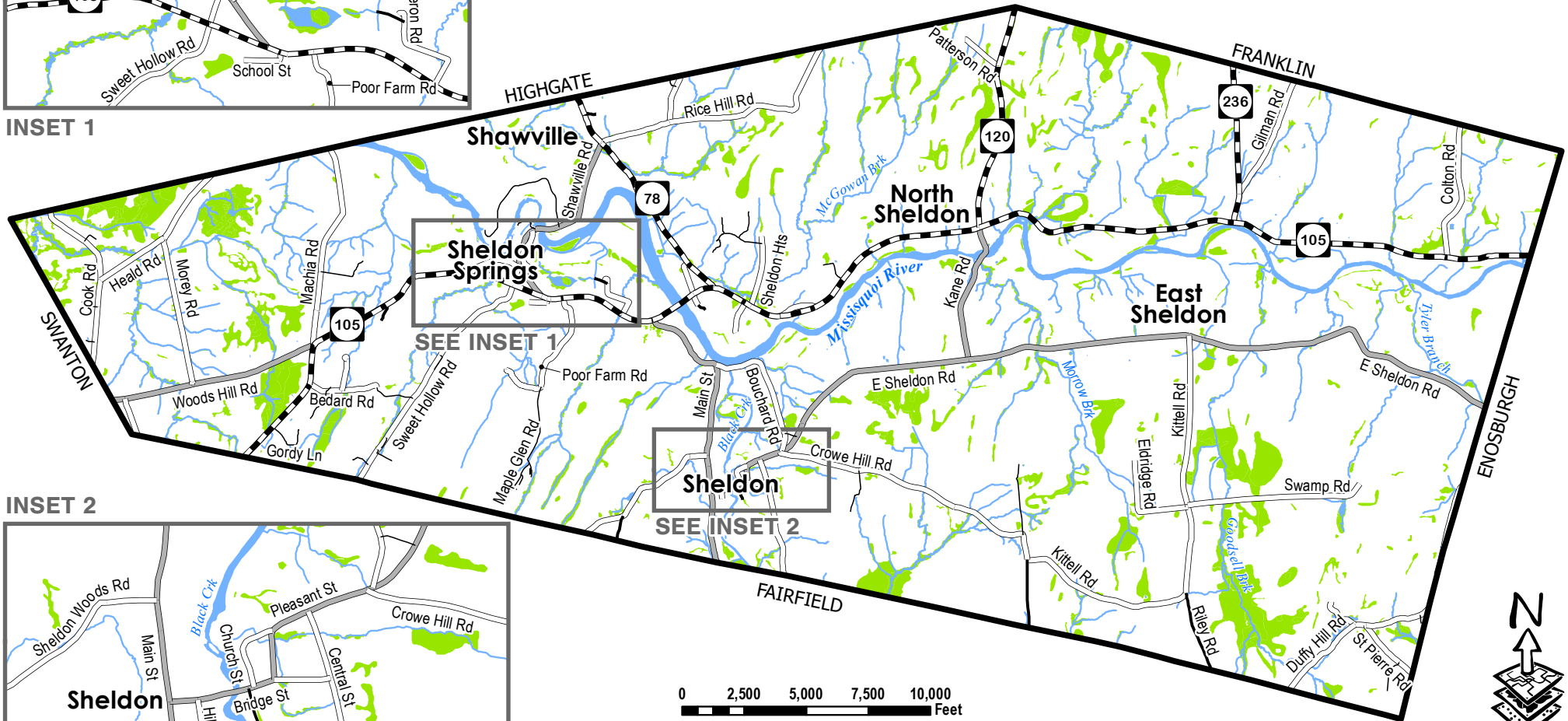


**Prepared by:**  
Northwest Regional Planning Commission  
75 Fairfield Street  
St. Albans, VT 05478  
(802) 524-5958  
[www.nrpcvt.com](http://www.nrpcvt.com)

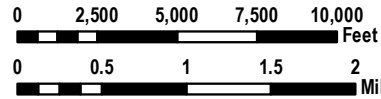
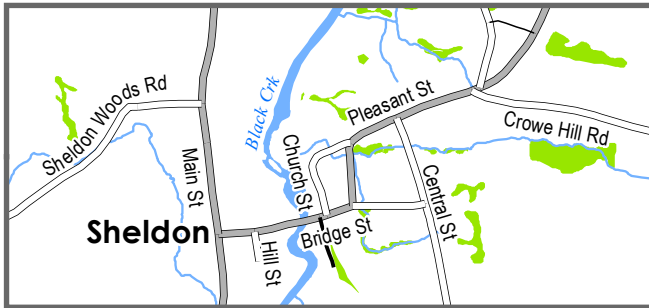
# TOWN OF SHELDON Base Map



INSET 1



INSET 2



## LEGEND

### Transportation Features

- State Highway
- Class 2 Town Highway
- Class 3 Town Highway
- Class 4 Town Highway
- Private Road

### Surface Water Features

- River, Stream or Brook
- Pond or River
- Wetland

### Other Feature

- Town Boundary

For planning purposes only.

Data Sources:  
All map features derived from Vermont Open Geoportal Data (<https://geodata.vermont.gov>).  
North arrow on map refers to Grid North.

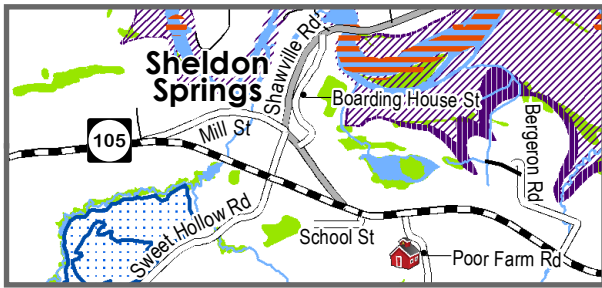
Located:  
zgis/projects/county/franklin/sheldon/townplan/2024

Created:  
January - 2024

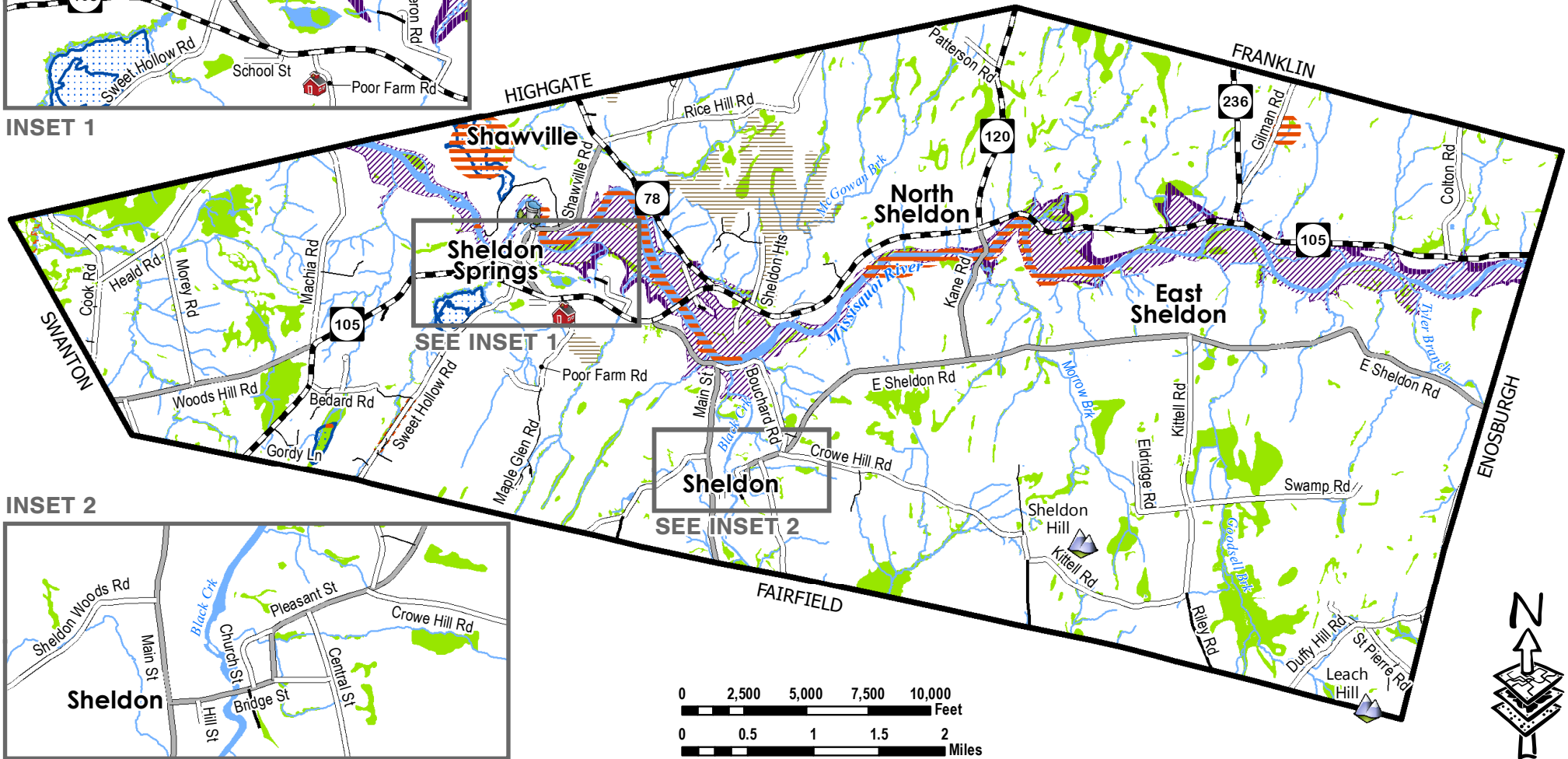


Prepared by:  
Northwest Regional Planning Commission  
75 Fairfield Street  
St. Albans, VT 05478  
(802) 524-5958  
[www.nrpcvt.com](http://www.nrpcvt.com)

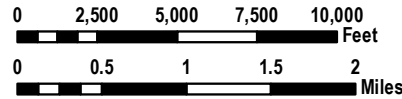
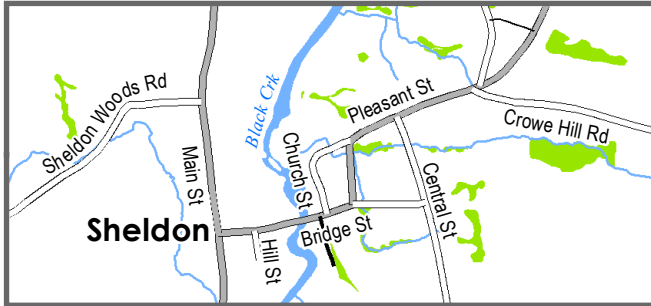
# TOWN OF SHELDON Critical Areas



INSET 1



INSET 2



## LEGEND

### Critical Features

- Dam
- School
- Summit
- Deer Yards
- Rare, Threatened or Endangered Species
- Significant Natural Community

### Transportation Features

- State Highway
- Class 2 Town Highway
- Class 3 Town Highway
- Class 4 Town Highway
- Private Road

### Surface Water Features

- River, Stream or Brook
- Pond or River
- Wetland
- 100 Year Flood Zone
- 500 Year Flood Zone

For planning purposes only.

Data Sources:  
All map features derived from Vermont Open Geospatial Data (<https://geodata.vermont.gov>).  
North arrow on map refers to Grid North.

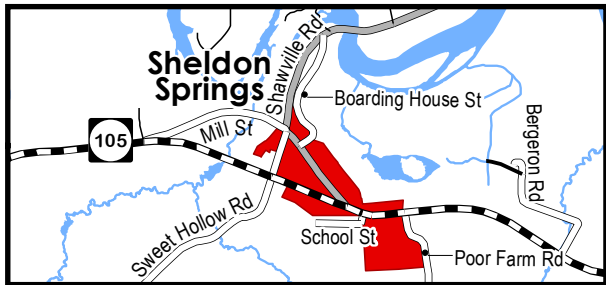
Located:  
z:gis/projects/county/franklin/sheldon/townplan/2024

Created:  
January - 2024

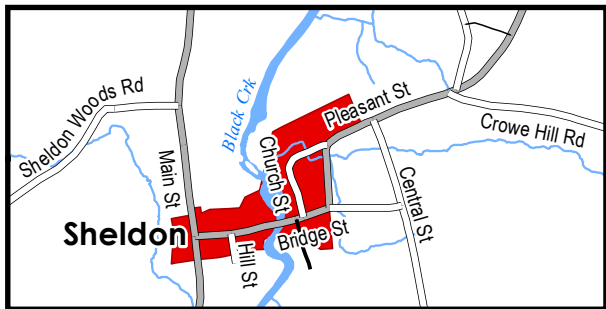


Prepared by:  
Northwest Regional Planning Commission  
75 Fairfield Street  
St. Albans, VT 05478  
(802) 524-5958  
[www.nrpcvt.com](http://www.nrpcvt.com)

# Designated Village Centers



0 1,000 2,000 3,000 4,000  
Feet

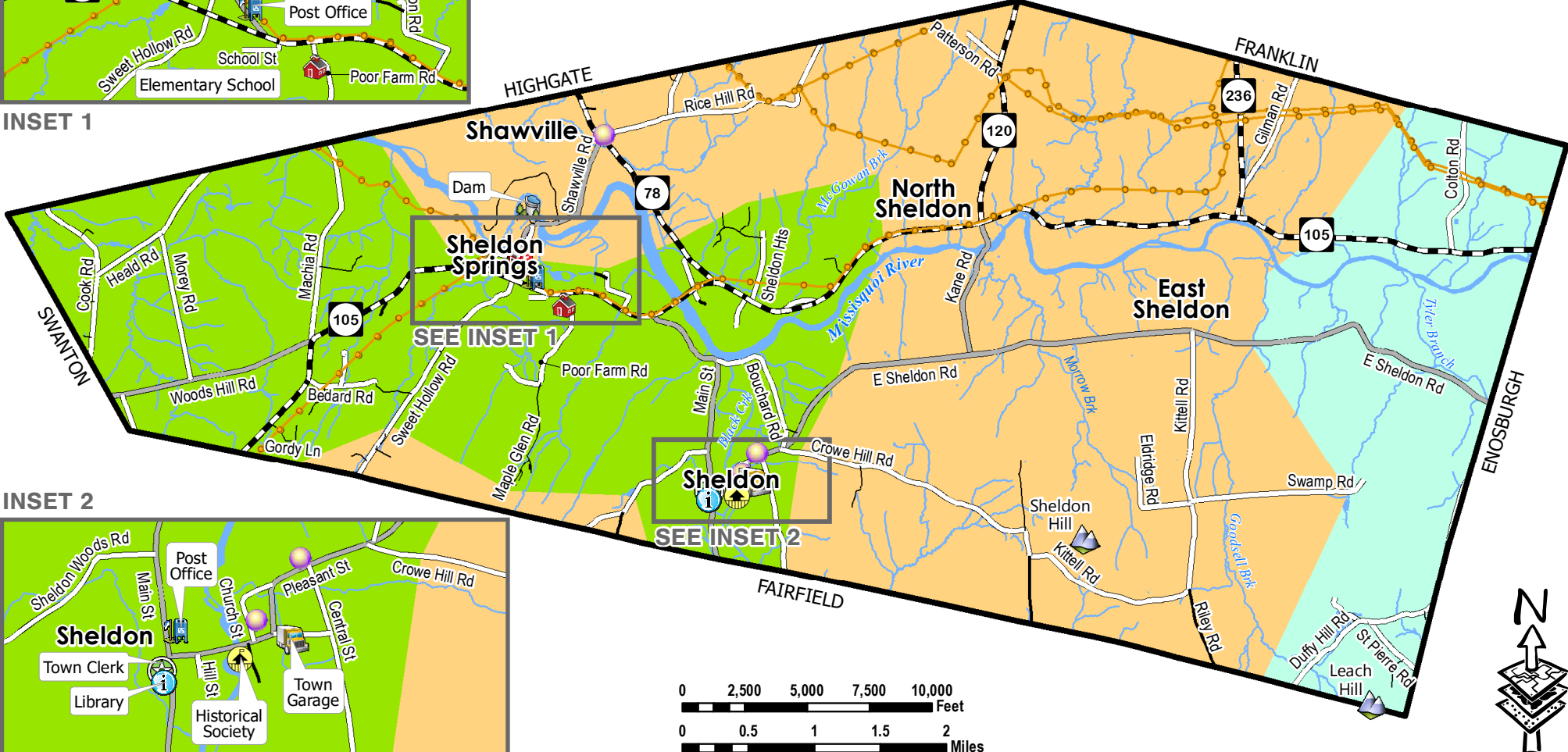


0 1,000 2,000 3,000 4,000  
Feet

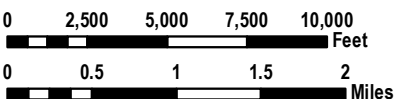
# TOWN OF SHELDON Facilities & Services



INSET 1



INSET 2



## LEGEND

### Facilities & Services Features

- Town Clerk
- Post Office
- Town Garage
- Library
- Historical Society
- School
- Church
- Fire Dept.
- Summit
- Dam

### Electric Power Features

- Electric Transmission Line
- Green Mountain Power
- VT Electric Co-op
- Village of Enosburg Falls

### Surface Water Features

- River, Stream or Brook
- Pond or River

### Transportation Features

- State Highway
- Class 2 Town Highway
- Class 3 Town Highway
- Class 4 Town Highway
- Private Road

### Other Feature

- Town Boundary

For planning purposes only.

Data Sources:  
All map features derived from Vermont Open Geoport Data (<https://geodata.vermont.gov>).  
North arrow on map refers to Grid North.

Located:  
[zgis/projects/county/franklin/sheldon/townplan/2024](https://zgis/projects/county/franklin/sheldon/townplan/2024)

Created:  
January - 2024

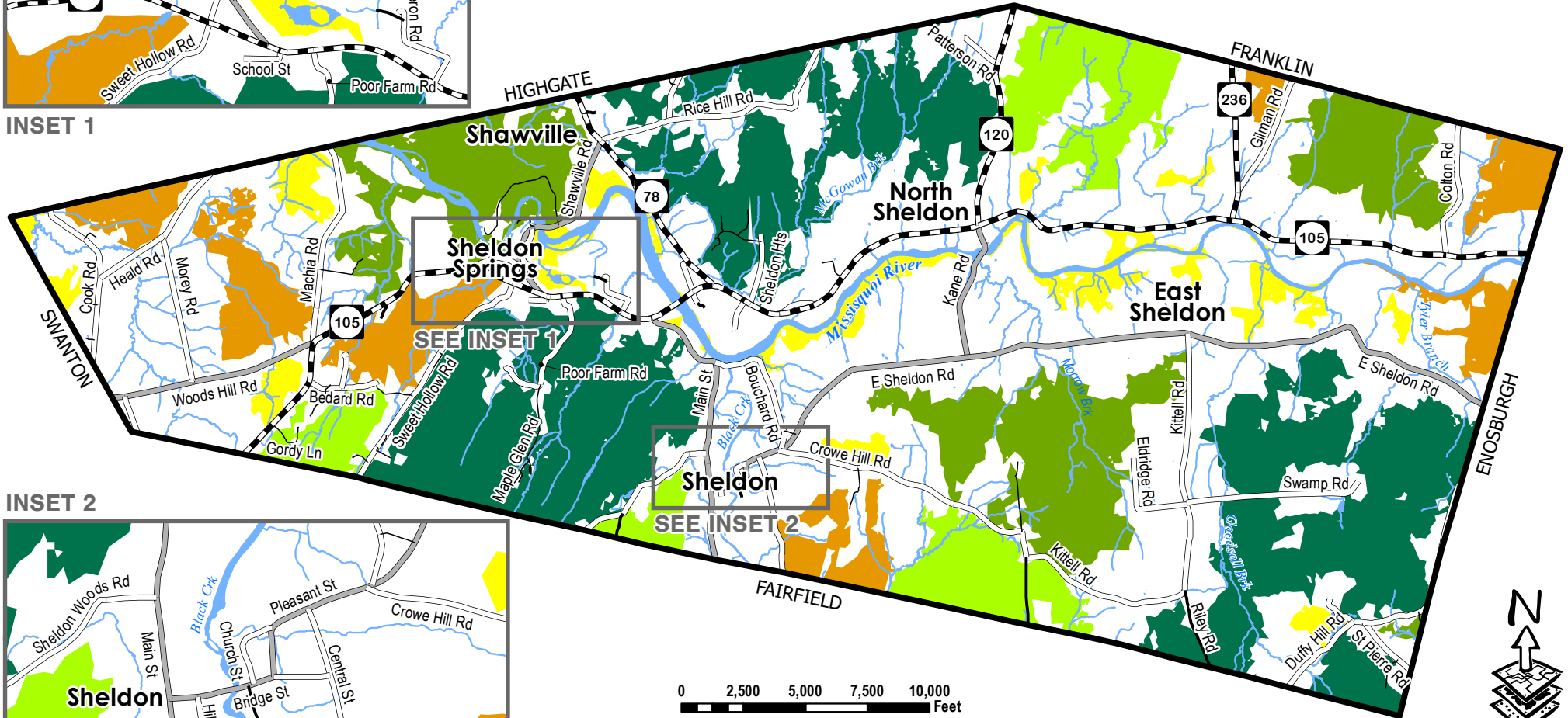


Prepared by:  
Northwest Regional Planning Commission  
75 Fairfield Street  
St. Albans, VT 05478  
(802) 524-5958  
[www.nrpcvt.com](http://www.nrpcvt.com)

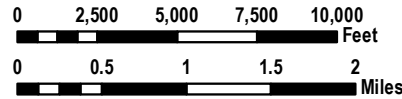
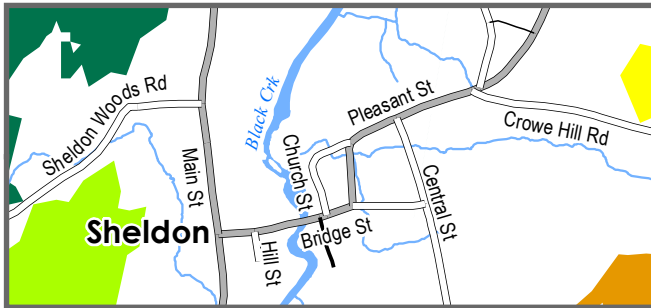
# TOWN OF SHELDON Habitat Blocks & Wildlife Corridors



INSET 1



INSET 2



## LEGEND

### Habitat Block & Wildlife Corridors-Block Acreage

- 22 - 250
- 250 - 500
- 500 - 1,000
- 1,000 - 1,500
- More than 1,500

### Transportation Features

- State Highway
- Class 2 Town Highway
- Class 3 Town Highway
- Class 4 Town Highway
- Private Road

### Surface Water Features

- River, Stream or Brook
- Pond or River

### Other Feature

- Town Boundary

For planning purposes only.

**Data Sources:**  
All map features derived from Vermont Open Geospatial Data (<https://geodata.vermont.gov>).  
North arrow on map refers to Grid North.

**Located:**  
z:gis/projects/county/franklin/sheldon/townplan/2024

**Created:**  
January - 2024

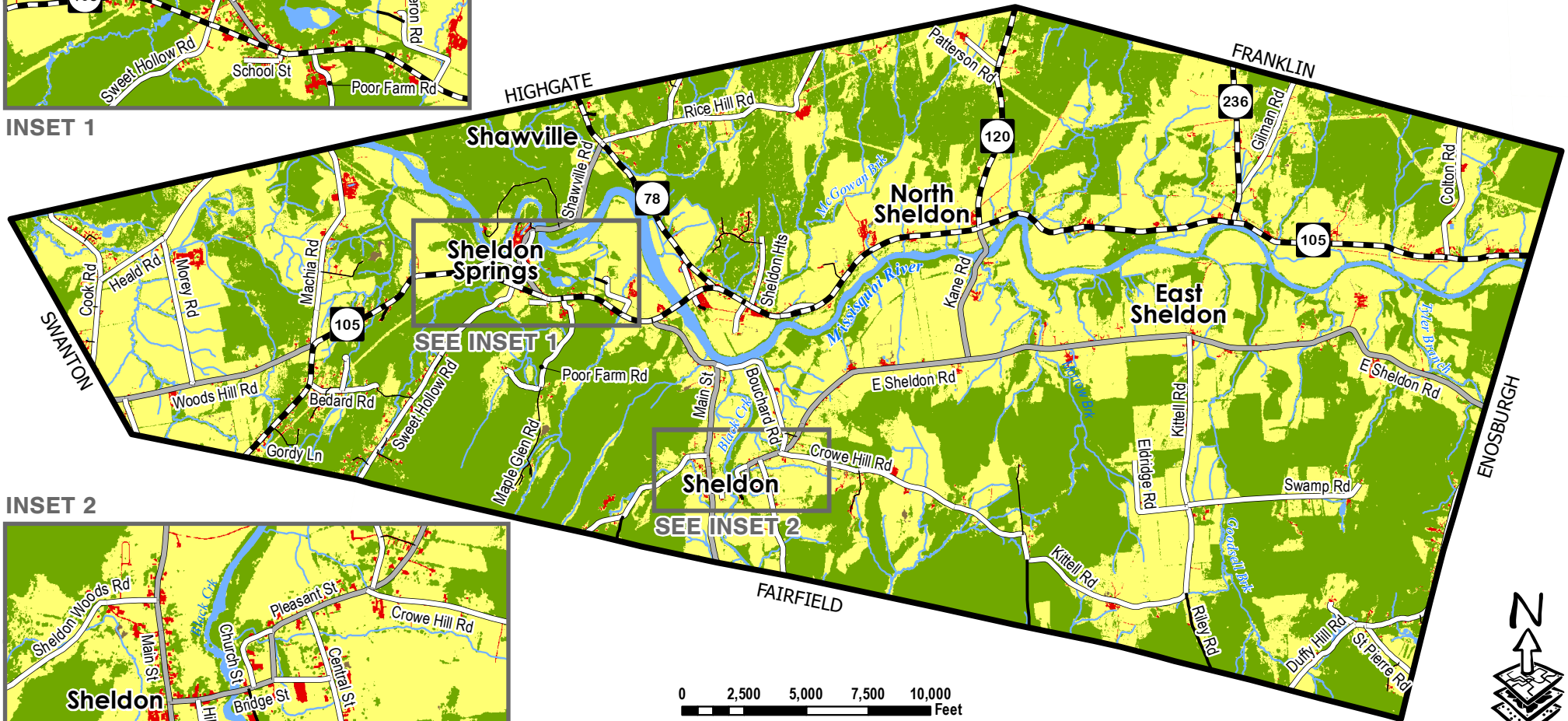


**Prepared by:**  
Northwest Regional Planning Commission  
75 Fairfield Street  
St. Albans, VT 05478  
(802) 524-5958  
[www.nrpcvt.com](http://www.nrpcvt.com)

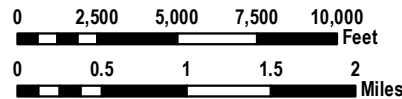
# TOWN OF SHELDON Land Use Land Cover



INSET 1



INSET 2



## LEGEND

### Land Use Features

- Built Up
- Bare Soil
- Grass/Shrub
- Tree Canopy
- Pond or River

### Transportation Features

- State Highway
- Class 2 Town Highway
- Class 3 Town Highway
- Class 4 Town Highway
- Private Road

### Other Feature

- Town Boundary

For planning purposes only.

**Data Sources:**  
All map features derived from Vermont Open Geoportals Data (<https://geodata.vermont.gov>).  
North arrow on map refers to Grid North.

**Located:**  
z:gis/projects/county/franklin/sheldon/townplan/2024

**Created:**  
January - 2024

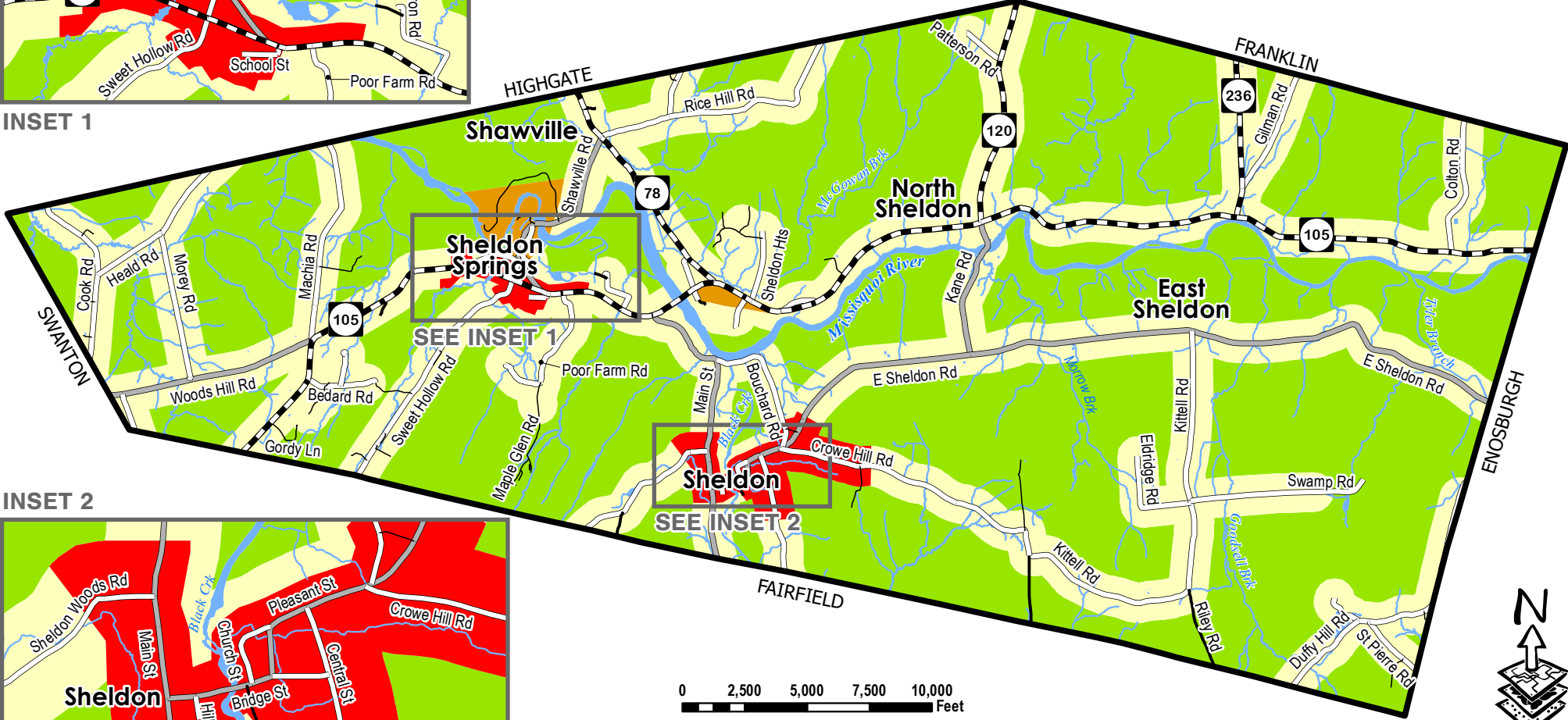


**Prepared by:**  
Northwest Regional Planning Commission  
75 Fairfield Street  
St. Albans, VT 05478  
(802) 524-5958  
[www.nrpcvt.com](http://www.nrpcvt.com)

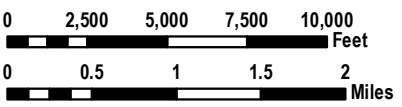
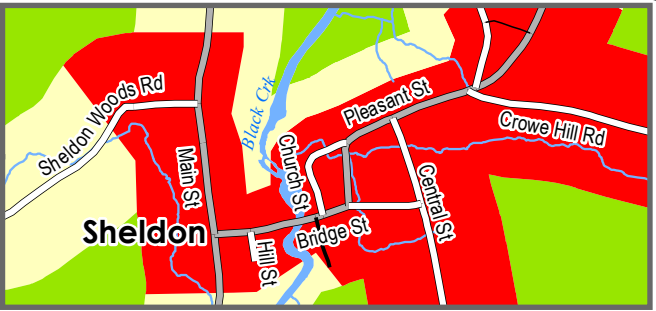
# TOWN OF SHELDON Proposed Land Use



INSET 1



INSET 2



## LEGEND

### Proposed Land Use Features

- Village
- Commercial/Industrial
- Rural Lands 1
- Rural Lands 2

### Transportation Features

- State Highway
- Class 2 Town Highway
- Class 3 Town Highway
- Class 4 Town Highway
- Private Road

### Other Feature

- Town Boundary

For planning purposes only.

**Data Sources:**  
All map features derived from Vermont Open Geoportals Data (<https://geodata.vermont.gov>).  
North arrow on map refers to Grid North.

**Located:**  
z:gis/projects/county/franklin/sheldon/townplan/2024

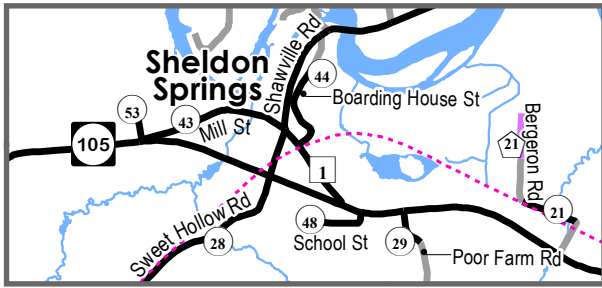
**Created:**  
January - 2024



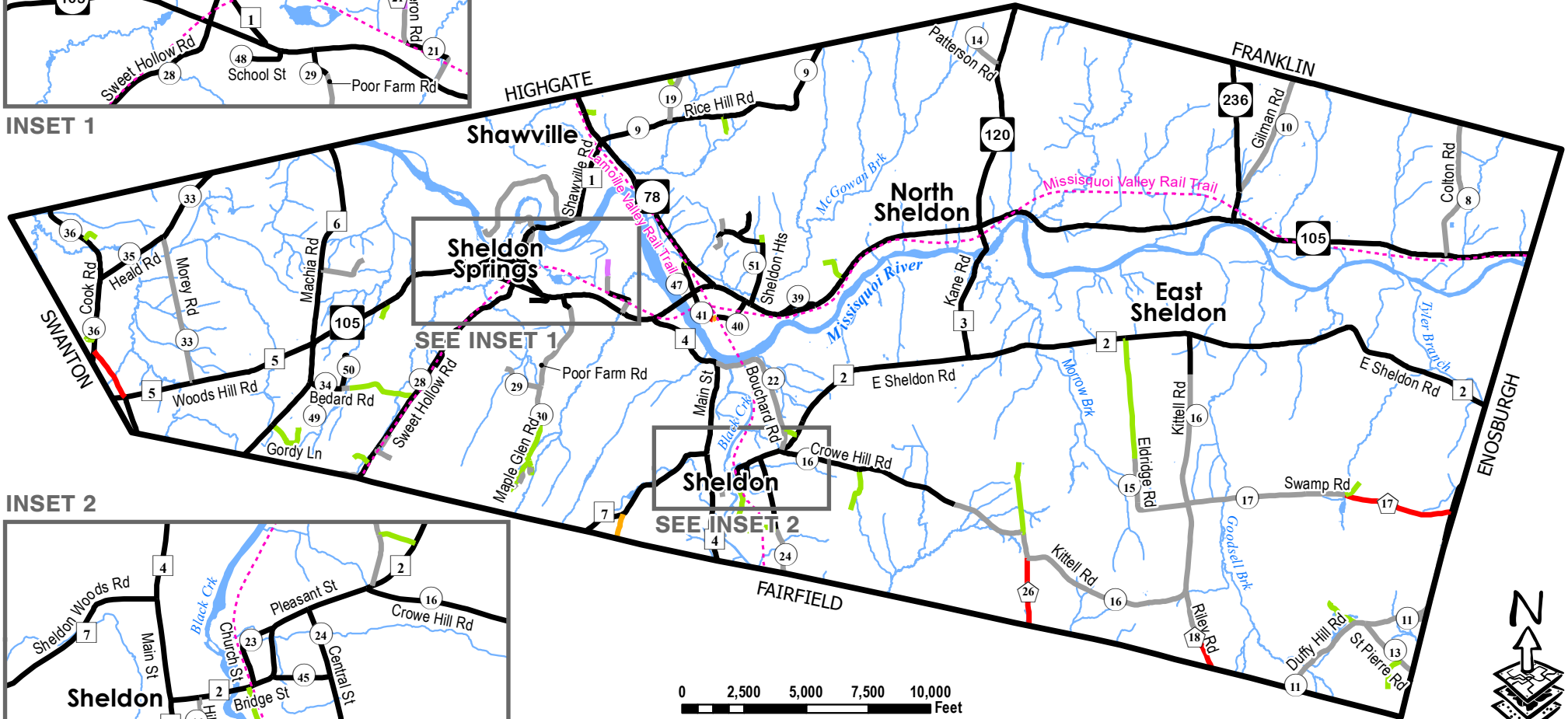
**Prepared by:**  
Northwest Regional Planning Commission  
75 Fairfield Street  
St. Albans, VT 05478  
(802) 524-5958  
[www.nrpcvt.com](http://www.nrpcvt.com)



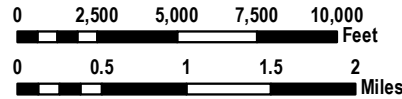
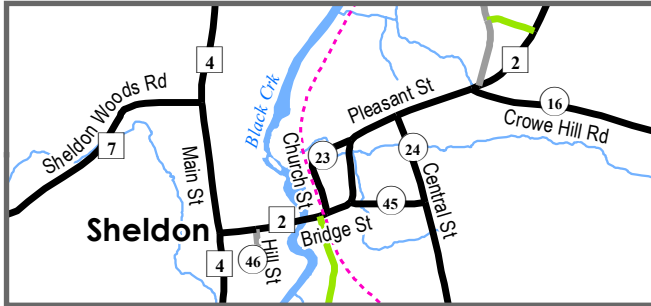
# TOWN OF SHELDON Transportation System



INSET 1



INSET 2



## LEGEND

### Road Surface Features

- Paved
- Gravel
- Soil or Graded & Drained Earth
- Unimproved/Primitive
- Impassable or Untraveled
- Unknown Surface Type

### Road Class Features

- State Route
- Class 2 Town Highway
- Class 3 Town Highway
- Class 4 Town Highway
- Legal Trail

### Surface Water Features

- River, Stream or Brook
- Pond or River

### Other Feature

- Town Boundary

For planning purposes only.

Data Sources:  
All map features derived from Vermont Open Geoportal Data (<https://geodata.vermont.gov>).  
North arrow on map refers to Grid North.

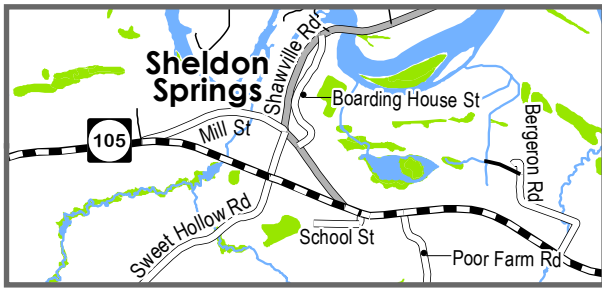
Located:  
z:gis/projects/county/franklin/sheldon/townplan/2024

Created:  
January - 2024

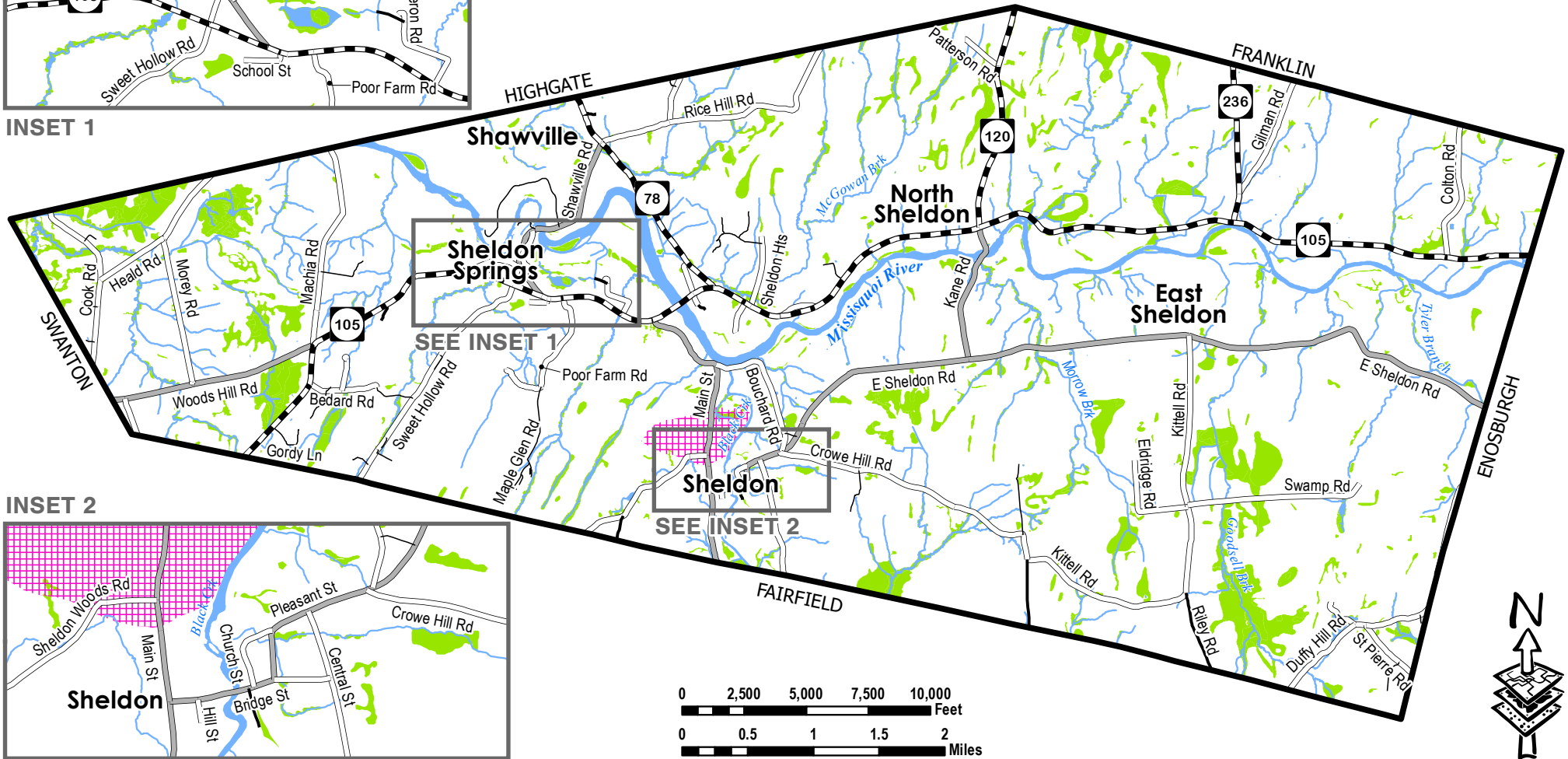


Prepared by:  
Northwest Regional  
Planning Commission  
75 Fairfield Street  
St. Albans, VT 05478  
(802) 524-5958  
[www.nrpcvt.com](http://www.nrpcvt.com)

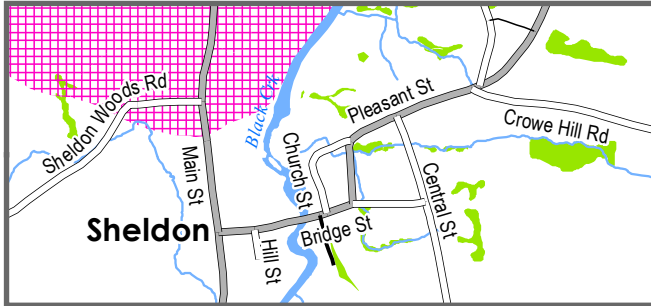
# TOWN OF SHELDON Water Resources 1



INSET 1



INSET 2



## LEGEND

### Surface Water Features

- River, Stream or Brook
- Pond or River
- Wetland

- Ground Water - Surface Protection Area

### Other Feature

- Town Boundary

### Transportation Features

- State Highway
- Class 2 Town Highway
- Class 3 Town Highway
- Class 4 Town Highway
- Private Road

For planning purposes only.

Data Sources:  
All map features derived from Vermont Open Geospatial Data (<https://geodata.vermont.gov>).  
North arrow on map refers to Grid North.

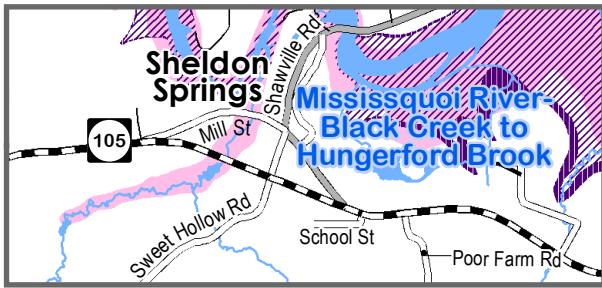
Located:  
z.gis/projects/county/franklin/sheldon/townplan/2024

Created:  
January - 2024

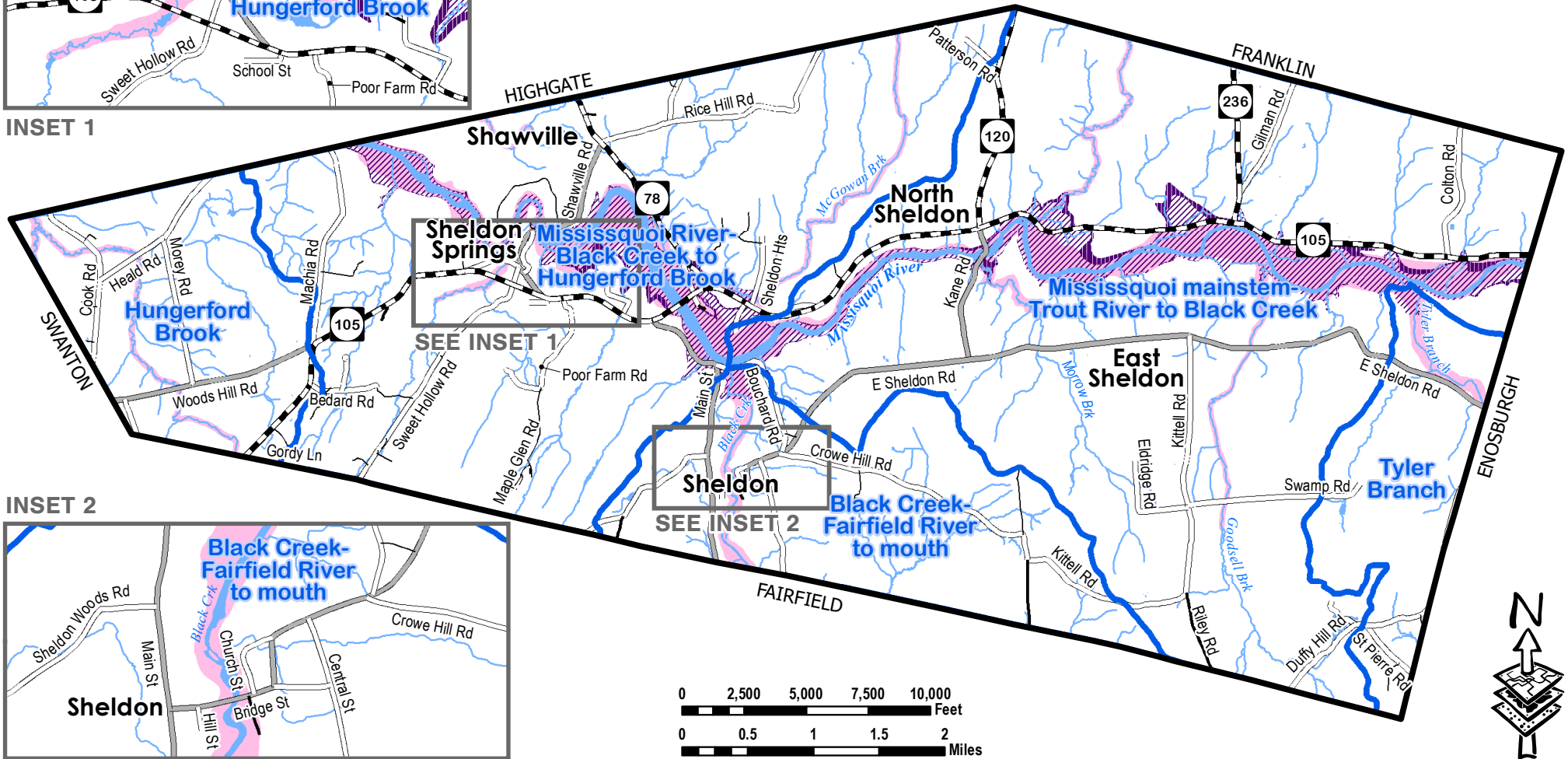


Prepared by:  
Northwest Regional Planning Commission  
75 Fairfield Street  
St. Albans, VT 05478  
(802) 524-5958  
[www.nrpcvt.com](http://www.nrpcvt.com)

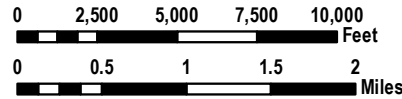
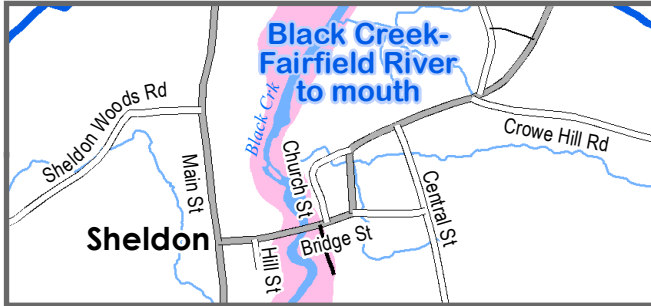
# TOWN OF SHELDON Water Resources 2



INSET 1



INSET 2



## LEGEND

### Surface Water Features

- River, Stream or Brook
- Pond or River
- River Corridor
- 100 Year Flood Zone
- 500 Year Flood Zone
- Sub-Watershed

### Transportation Features

- State Highway
- Class 2 Town Highway
- Class 3 Town Highway
- Class 4 Town Highway
- Private Road

### Other Feature

- Town Boundary

For planning purposes only.

Data Sources:  
All map features derived from Vermont Open Geoportals Data (<https://geodata.vermont.gov>).  
North arrow on map refers to Grid North.

Located:  
z.gis/projects/county/franklin/sheldon/townplan/2024

Created:  
January - 2024



Prepared by:  
Northwest Regional Planning Commission  
75 Fairfield Street  
St. Albans, VT 05478  
(802) 524-5958  
[www.nrpcvt.com](http://www.nrpcvt.com)