

AGRICULTURAL SOILS

TOWN OF MONTGOMERY

LEGEND

Soil Features

- Prime Agricultural Soils
- Statewide Importance Soils
- Local Soils

Transportation Features

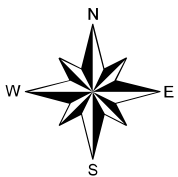
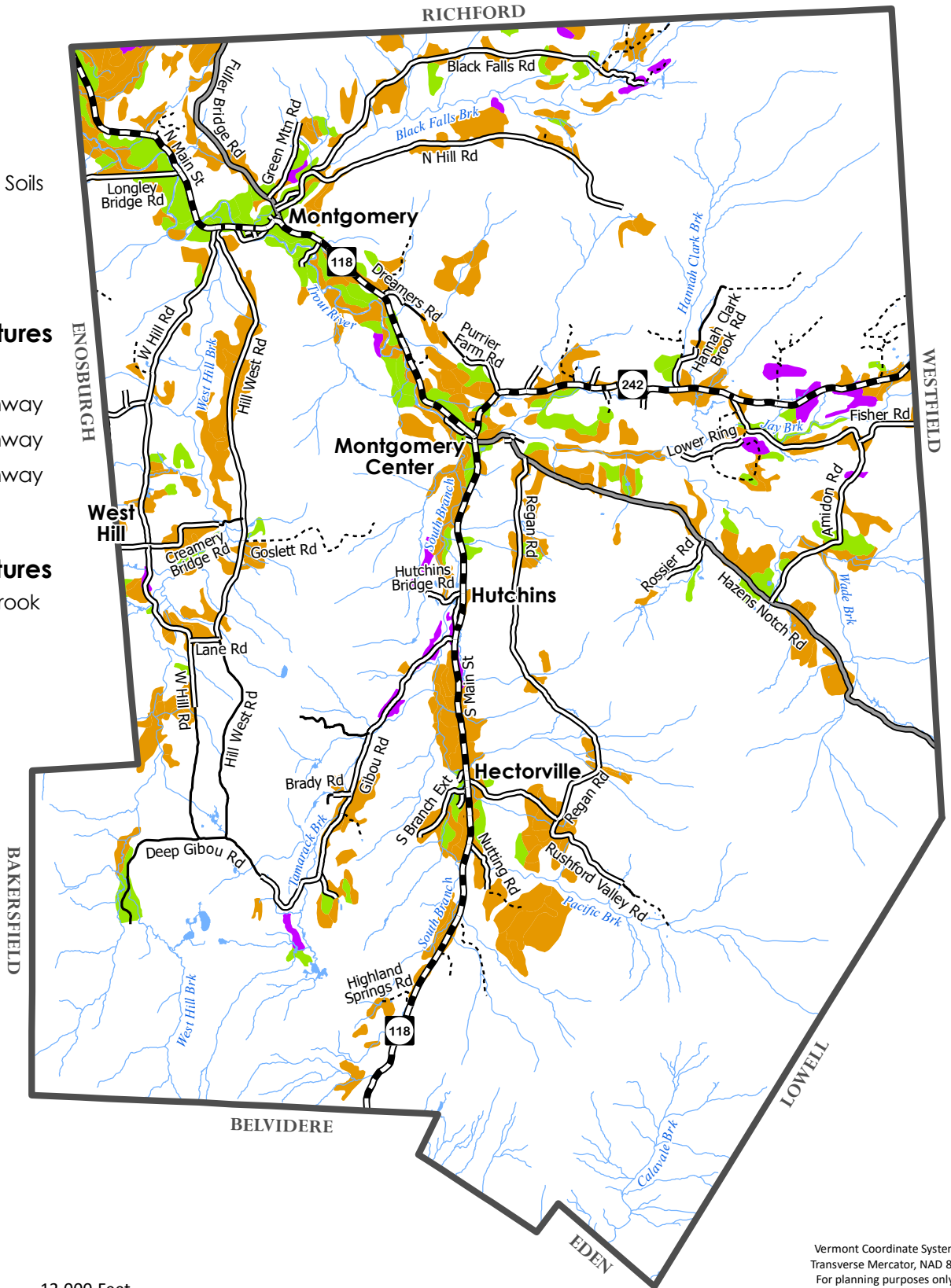
- State Highway
- Class 2 Town Highway
- Class 3 Town Highway
- Class 4 Town Highway
- Private Road

Surface Water Features

- River, Stream or Brook
- Pond

Other Feature

- Town Boundary



0 4,000 8,000 12,000 Feet

0 1 2 3 Miles

0 1,500 3,000 4,500 6,000 Meters

Vermont Coordinate System
Transverse Mercator, NAD 83.
For planning purposes only.





Prepared by:
Northwest Regional
Planning Commission
75 Fairfield Street
St. Albans, VT 05478
(802) 524-5958
www.nrpcvt.com
March - 2024

BASE MAP




TOWN OF MONTGOMERY

LEGEND


Transportation Features

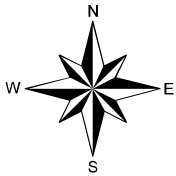
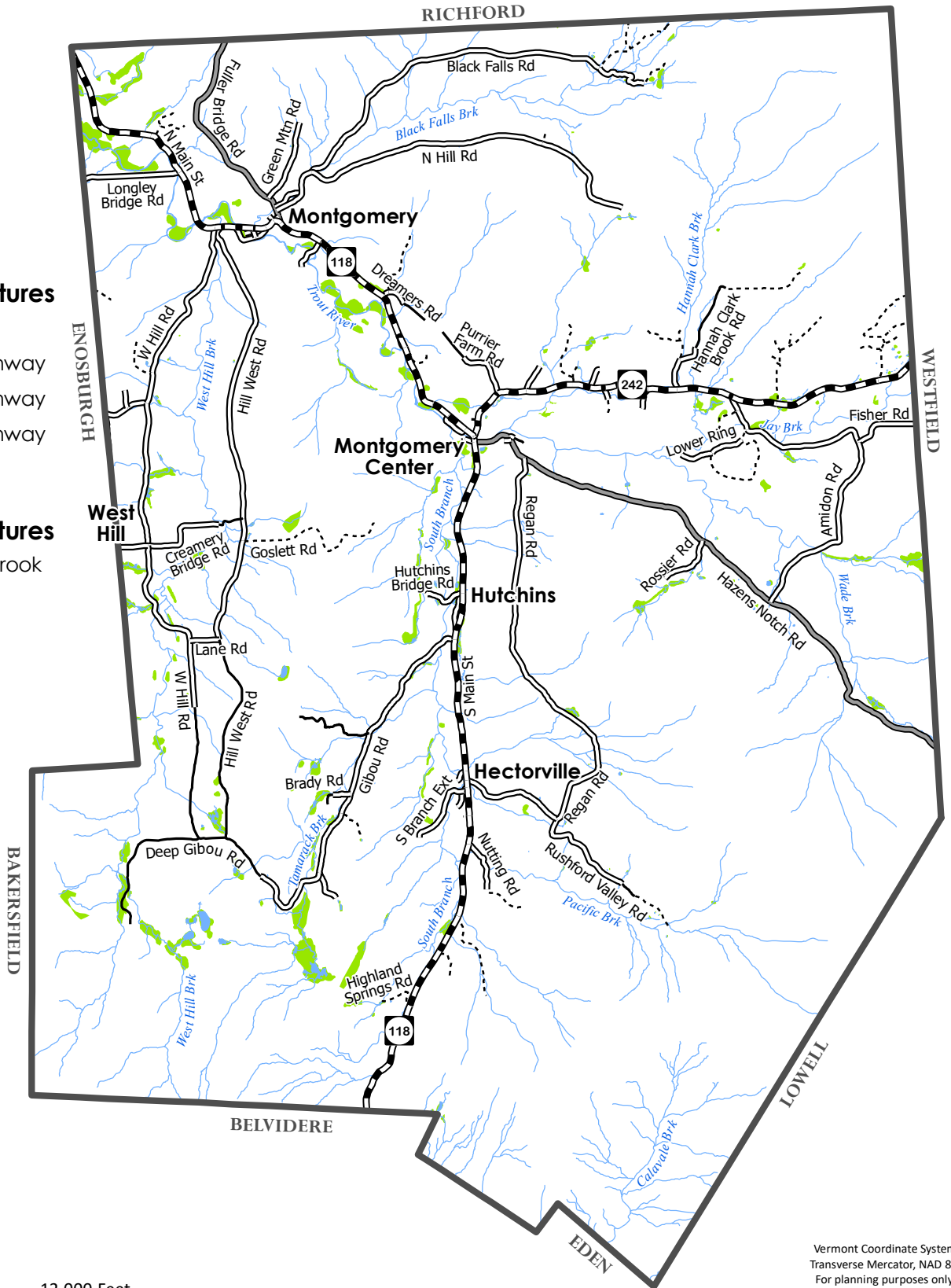
-  State Highway
-  Class 2 Town Highway
-  Class 3 Town Highway
-  Class 4 Town Highway
-  Private Road

Surface Water Features

-  River, Stream or Brook
-  Pond
-  Wetland

Other Feature

-  Town Boundary



0 4,000 8,000 12,000 Feet

0 1 2 3 Miles

0 1,500 3,000 4,500 6,000 Meters

Vermont Coordinate System
 Transverse Mercator, NAD 83.
 For planning purposes only.



Prepared by:
 Northwest Regional
 Planning Commission
 75 Fairfield Street
 St. Albans, VT 05478
 (802) 524-5958
 www.nrpcvt.com
 March - 2024

CRITICAL AREAS




TOWN OF MONTGOMERY

LEGEND






Critical Area Features

-  Bear Mast-Wetland Feeding Area
-  Bear Crossing
-  Moose Collision
-  Summit
-  Deer Yards
-  Significant Natural Community
-  Rare, Threatened or Endangered Species
-  100 Year Flood Zone
-  Wetland

Habitat Block & Wildlife Corridors-Block Acreage

-  5,000 - 10,000
-  10,000 - 30,000
-  30,000+

Transportation Features

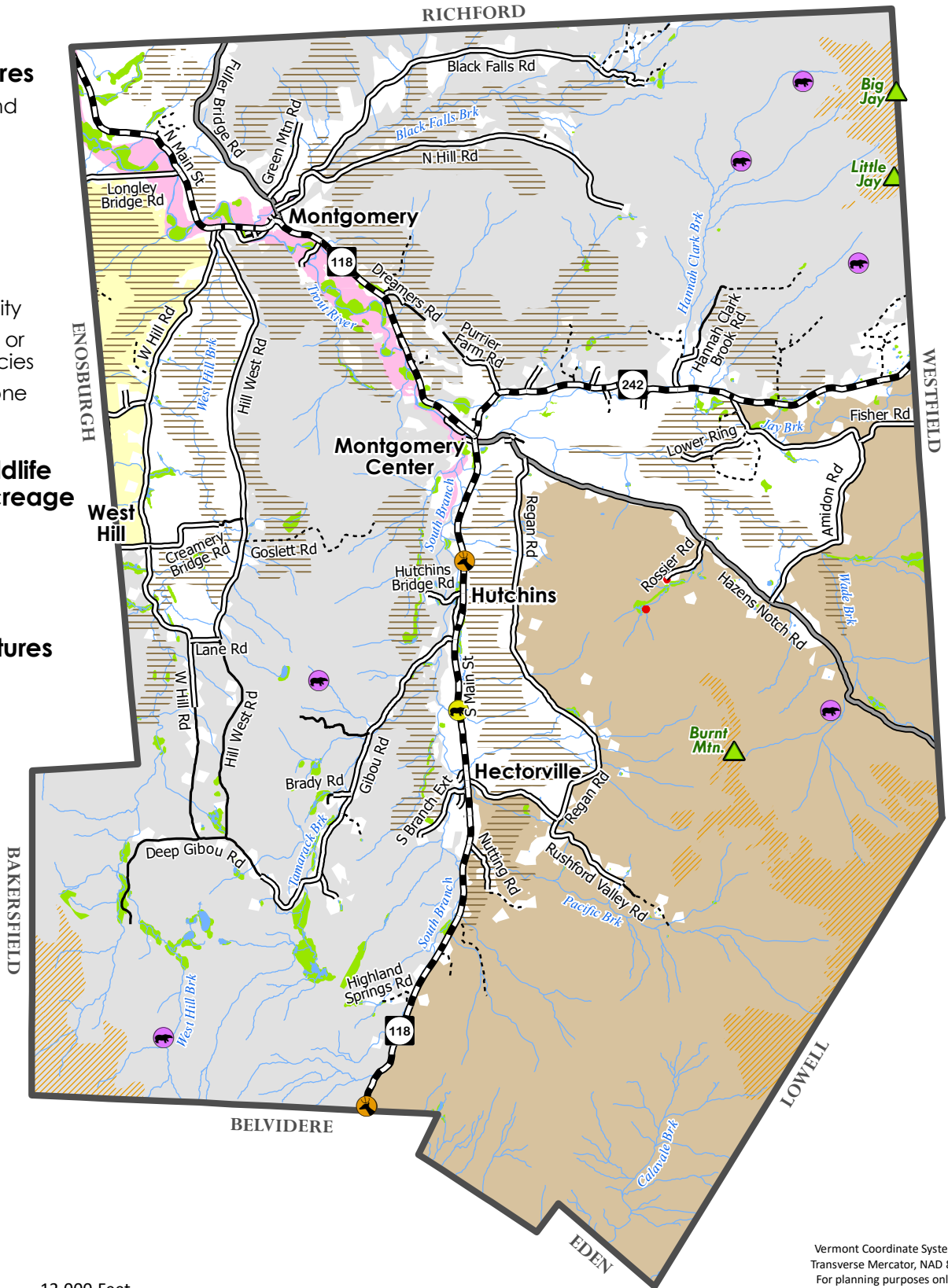
-  State Highway
-  Class 2 Town Highway
-  Class 3 Town Highway
-  Class 4 Town Highway
-  Private Road

Surface Water Features

-  River, Stream or Brook
-  Pond

Other Feature

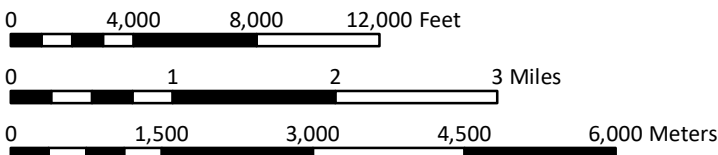
-  Town Boundary



Vermont Coordinate System
 Transverse Mercator, NAD 83.
 For planning purposes only.



Prepared by:
 Northwest Regional
 Planning Commission
 75 Fairfield Street
 St. Albans, VT 05478
 (802) 524-5958
 www.nrpcvt.com
 March - 2024



Data Sources: All map features derived from VGIS digital coverages. North arrow on map refers to Grid North.

Location: nrpcgis\projects\county\franklin\montgomery\townplan2024

CURRENT LAND USE


TOWN OF MONTGOMERY

LEGEND

Current Land Use Features

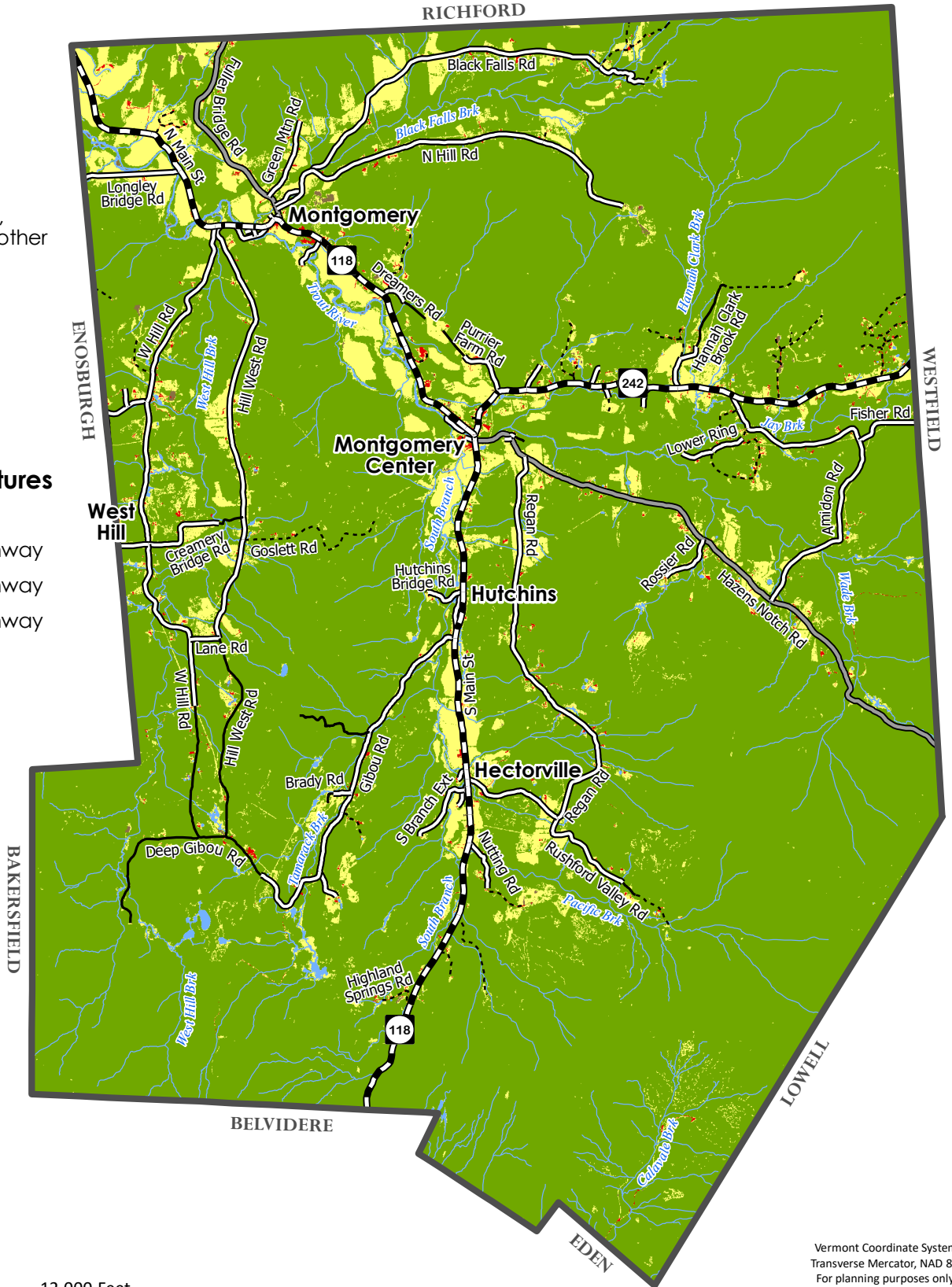
-  Built Up (buildings, roads, railroad & other paved surfaces)
-  Bare Soil
-  Grass/Shrub
-  Tree Canopy
-  Surface Water

Transportation Features

-  State Highway
-  Class 2 Town Highway
-  Class 3 Town Highway
-  Class 4 Town Highway
-  Private Road

Other Feature

-  Town Boundary



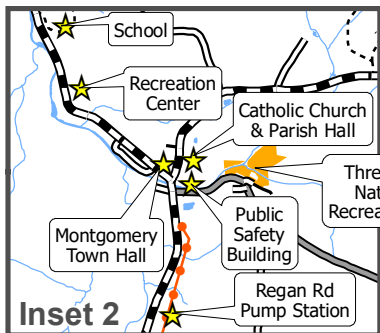
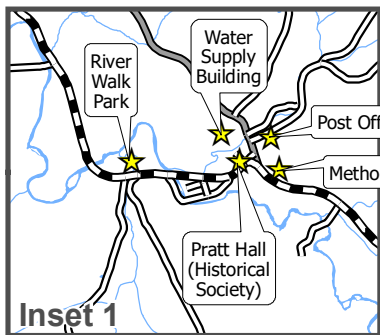
Vermont Coordinate System
 Transverse Mercator, NAD 83.
 For planning purposes only.



Prepared by:
 Northwest Regional
 Planning Commission
 75 Fairfield Street
 St. Albans, VT 05478
 (802) 524-5958
www.nrpvt.com
 March - 2024

FACILITIES & SERVICES

TOWN OF MONTGOMERY



LEGEND

Facilities & Services Features

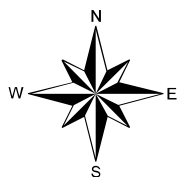
- Facility
- Electric Transmission Line
- State Forest
- Town Forest
- Wildlife Management Area
- Natural Recreation Area
- Atlas Timberlands Partnership
- The Nature Conservancy
- Vt River Conservancy Easement

Transportation Features

- State Highway
- Class 2 Town Highway
- Class 3 Town Highway
- Class 4 Town Highway
- Private Road

Other Feature

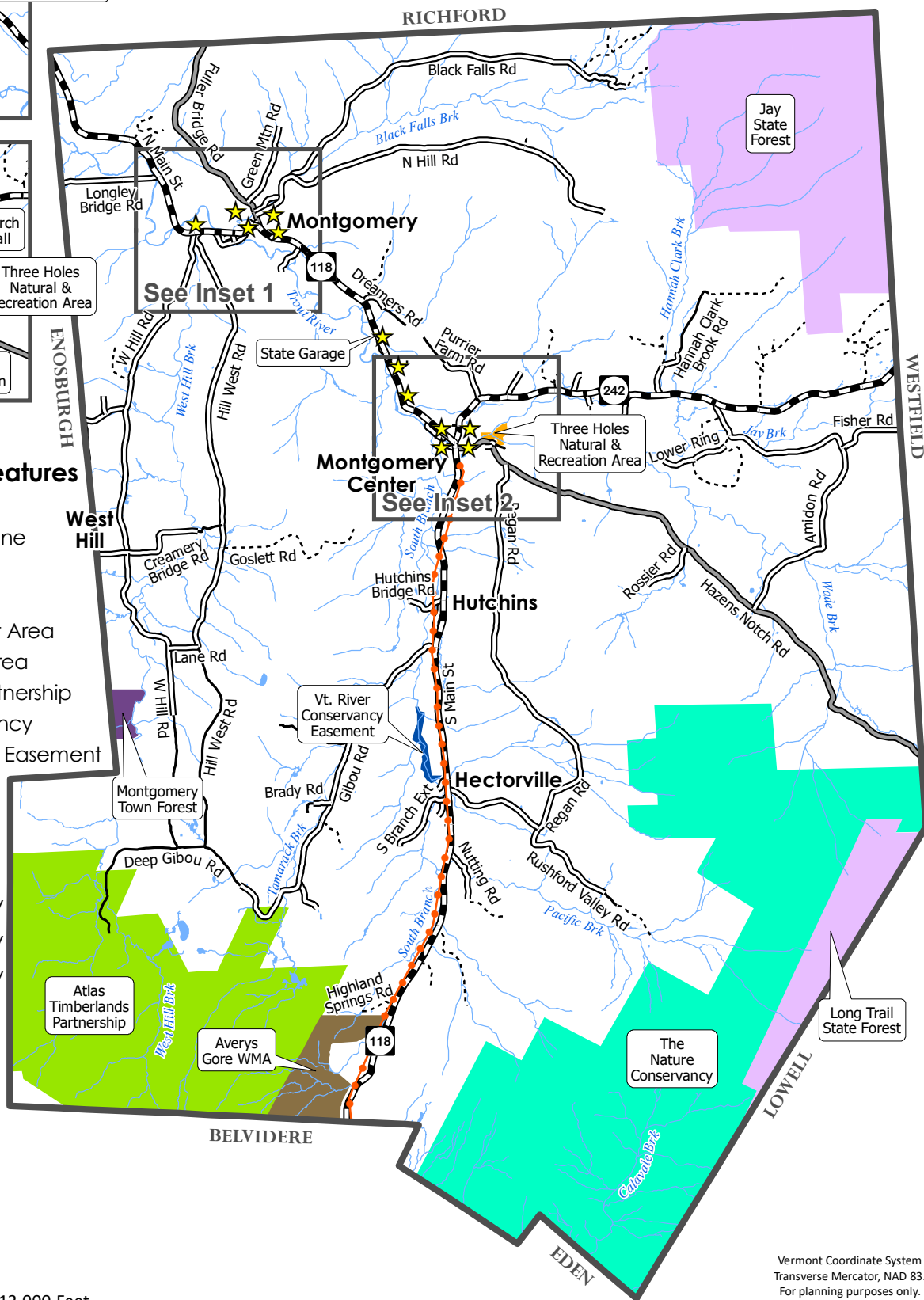
- Town Boundary



0 4,000 8,000 12,000 Feet

0 1 2 3 Miles

0 1,500 3,000 4,500 6,000 Meters

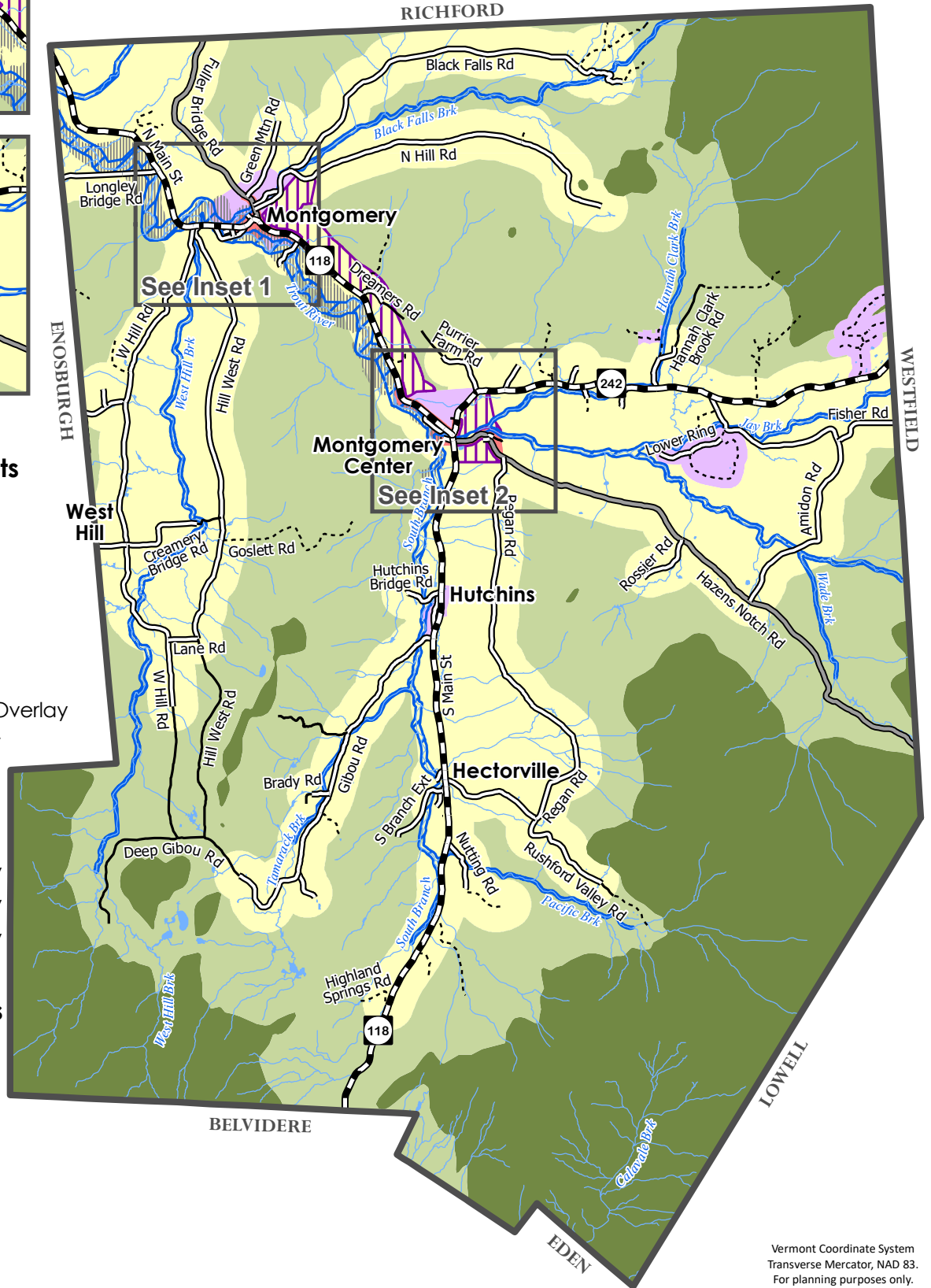
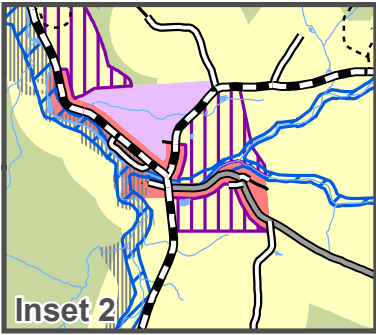
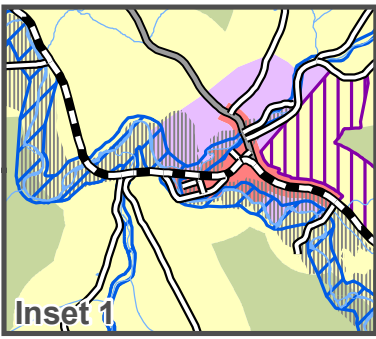


Vermont Coordinate System
Transverse Mercator, NAD 83.
For planning purposes only.



Prepared by:
Northwest Regional
Planning Commission
75 Fairfield Street
St. Albans, VT 05478
(802) 524-5958
www.nrpcvt.com
March - 2024

FUTURE LAND USE TOWN OF MONTGOMERY



LEGEND

Future Land Use Districts

- Village 1
- Village 2
- Under Review to change to Village 2
- Conservation 1
- Conservation 2
- Rural/Residential
- 100 Year Flood Zone Overlay
- River Corridor Overlay

Transportation Features

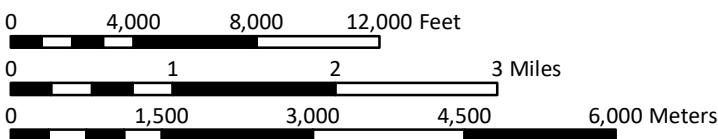
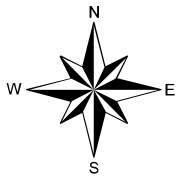
- State Highway
- Class 2 Town Highway
- Class 3 Town Highway
- Class 4 Town Highway
- Private Road

Surface Water Features

- River, Stream or Brook
- Pond

Other Feature

- Town Boundary



Data Sources: All map features derived from VGIS digital coverages. North arrow on map refers to Grid North.

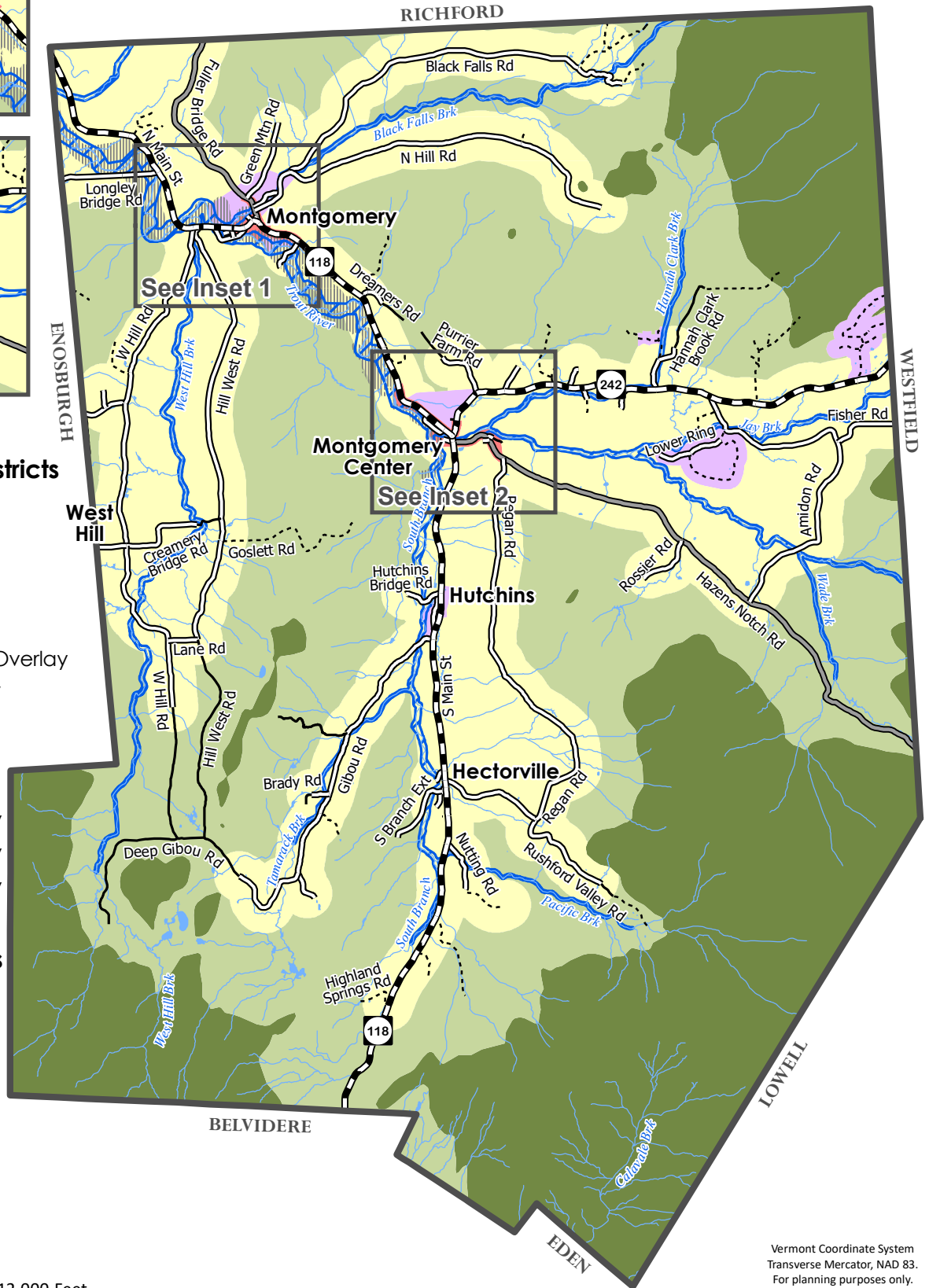
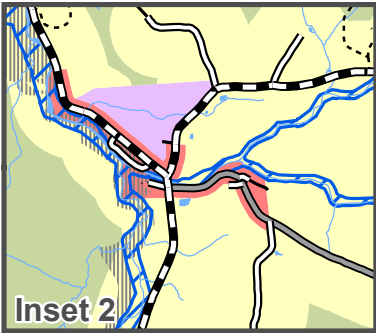
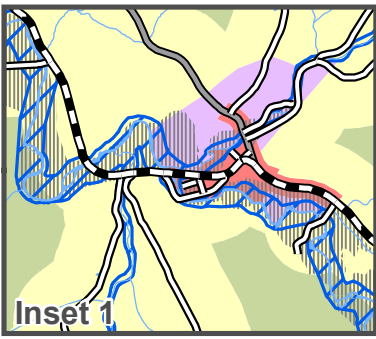
Vermont Coordinate System
Transverse Mercator, NAD 83.
For planning purposes only.



Prepared by:
Northwest Regional
Planning Commission
75 Fairfield Street
St. Albans, VT 05478
(802) 524-5958
www.nrpcvt.com
March - 2024

Location: nrpcgis\projects\county\franklin\montgomery\townplan2024

PROPOSED LAND USE TOWN OF MONTGOMERY



LEGEND

Proposed Land Use Districts

- Village 1
- Village 2
- Conservation 1
- Conservation 2
- Rural/Residential
- 100 Year Flood Zone Overlay
- River Corridor Overlay

Transportation Features

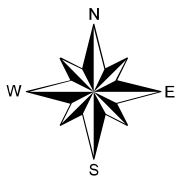
- State Highway
- Class 2 Town Highway
- Class 3 Town Highway
- Class 4 Town Highway
- Private Road

Surface Water Features

- River, Stream or Brook
- Pond

Other Feature

- Town Boundary



0 4,000 8,000 12,000 Feet

0 1 2 3 Miles

0 1,500 3,000 4,500 6,000 Meters

Vermont Coordinate System
Transverse Mercator, NAD 83.
For planning purposes only.



Prepared by:
Northwest Regional
Planning Commission
75 Fairfield Street
St. Albans, VT 05478
(802) 524-5958
www.nrpcvt.com
March - 2024

SEPTIC SUITABILITY

TOWN OF MONTGOMERY

LEGEND

Septic Suitability Features

- Well Suited
- Moderately Suited
- Marginally Suited
- Not Suited
- Not Rated

Transportation Features

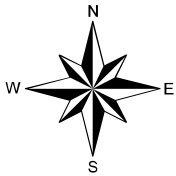
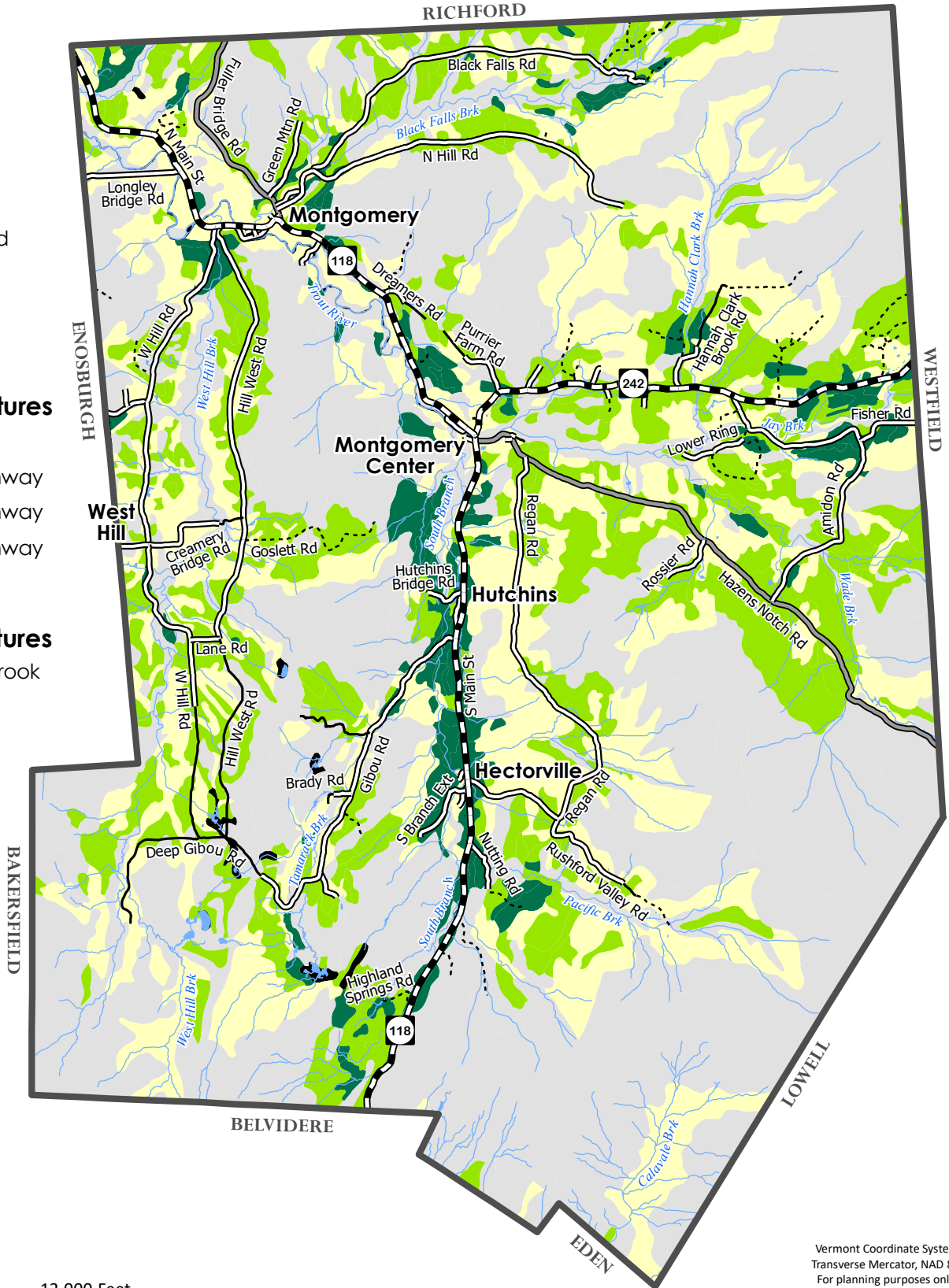
- State Highway
- Class 2 Town Highway
- Class 3 Town Highway
- Class 4 Town Highway
- Private Road

Surface Water Features

- River, Stream or Brook
- Pond

Other Feature

- Town Boundary



0 4,000 8,000 12,000 Feet

0 1 2 3 Miles

0 1,500 3,000 4,500 6,000 Meters

Vermont Coordinate System
 Transverse Mercator, NAD 83.
 For planning purposes only.






Prepared by:
 Northwest Regional
 Planning Commission
 75 Fairfield Street
 St. Albans, VT 05478
 (802) 524-5958
 www.nrpcvt.com
 March - 2024

TOPOGRAPHIC LIMITATIONS



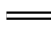
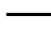
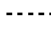
TOWN OF MONTGOMERY

LEGEND



Topographic Features

-  1,000 Foot Contour Line
-  Slopes 20%
-  Slopes 15%

Transportation Features

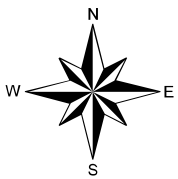
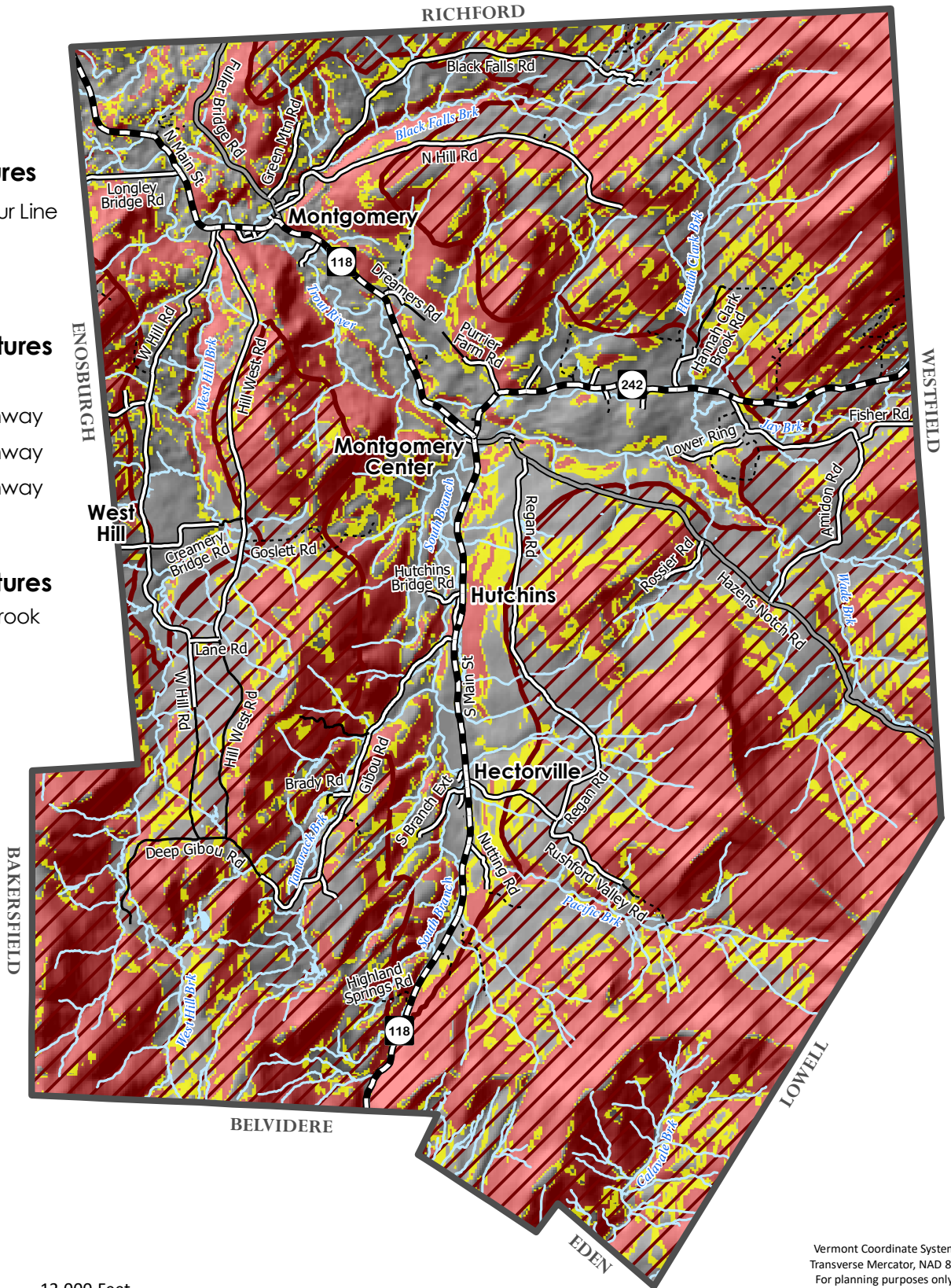
-  State Highway
-  Class 2 Town Highway
-  Class 3 Town Highway
-  Class 4 Town Highway
-  Private Road

Surface Water Features

-  River, Stream or Brook
-  Pond

Other Feature

-  Town Boundary



0 4,000 8,000 12,000 Feet

0 1 2 3 Miles

0 1,500 3,000 4,500 6,000 Meters

Vermont Coordinate System
Transverse Mercator, NAD 83.
For planning purposes only.



Prepared by:
Northwest Regional
Planning Commission
75 Fairfield Street
St. Albans, VT 05478
(802) 524-5958
www.nrpcvt.com
March - 2024

TRANSPORTATION SYSTEM

TOWN OF MONTGOMERY

LEGEND

Highway Features

- State Numbered Route
- Class 2 Town Highway
- Class 3 Town Highway
- Class 4 Town Highway

Road Surface Features

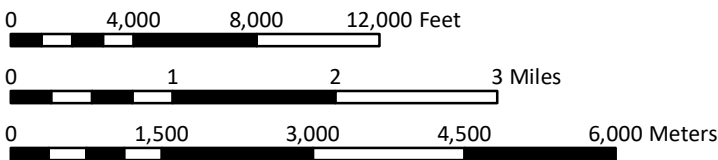
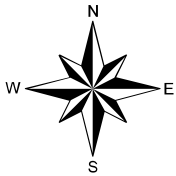
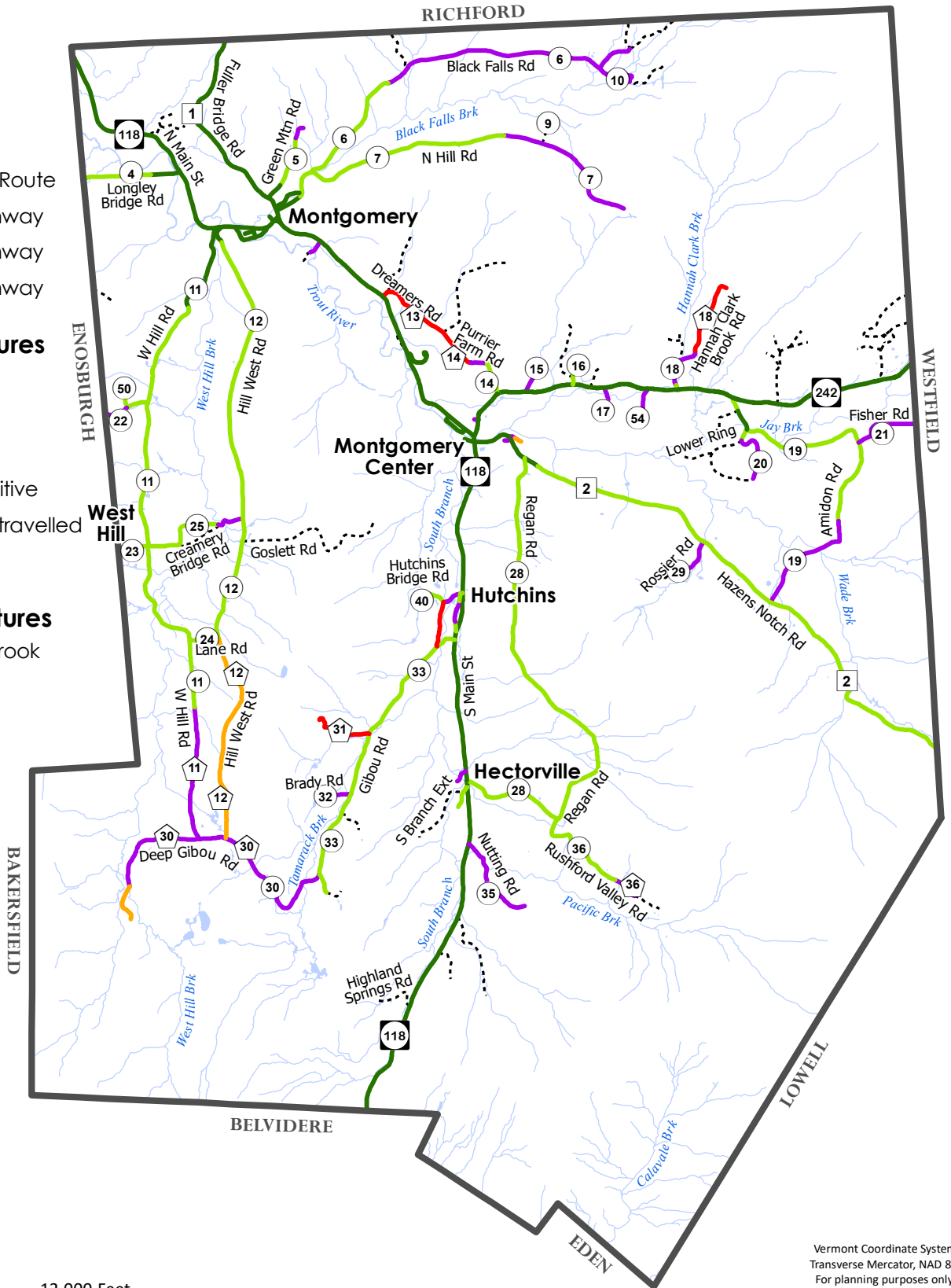
- Surfaced
- Gravel
- Soil or Graded
- Unimproved/Primitive
- Impassable or Untravelled
- Unknown

Surface Water Features

- River, Stream or Brook
- Pond

Other Feature

- Town Boundary

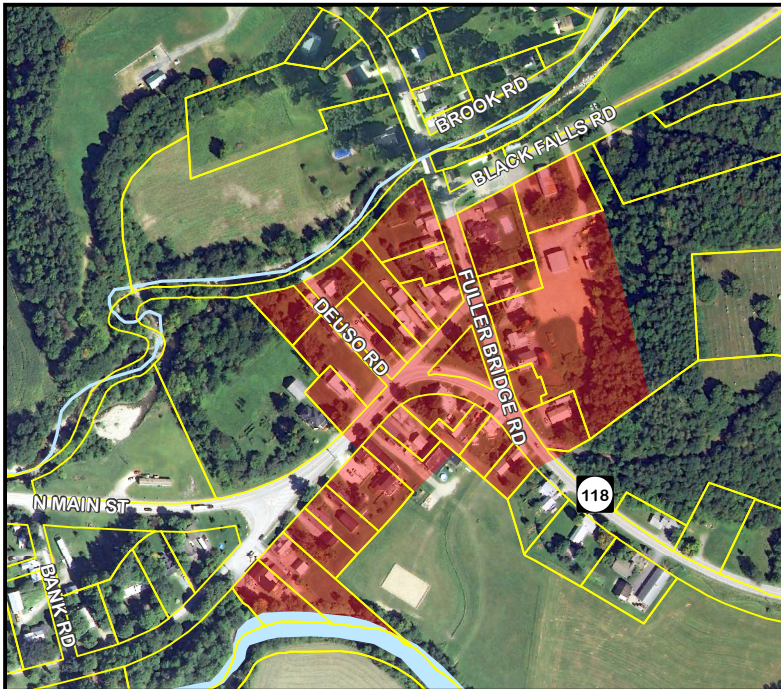


Vermont Coordinate System
 Transverse Mercator, NAD 83.
 For planning purposes only.

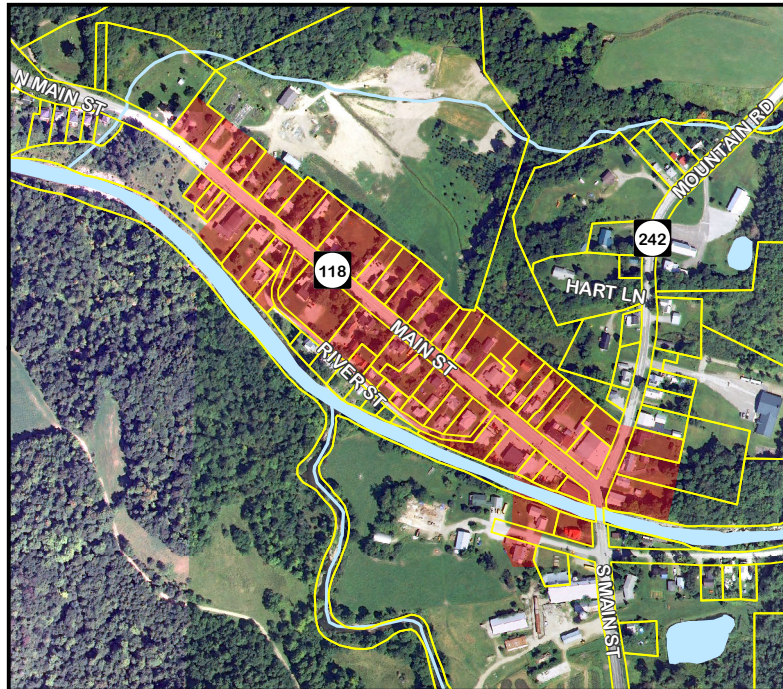


Prepared by:
 Northwest Regional
 Planning Commission
 75 Fairfield Street
 St. Albans, VT 05478
 (802) 524-5958
 www.nrpcvt.com
 March - 2024

Montgomery Village

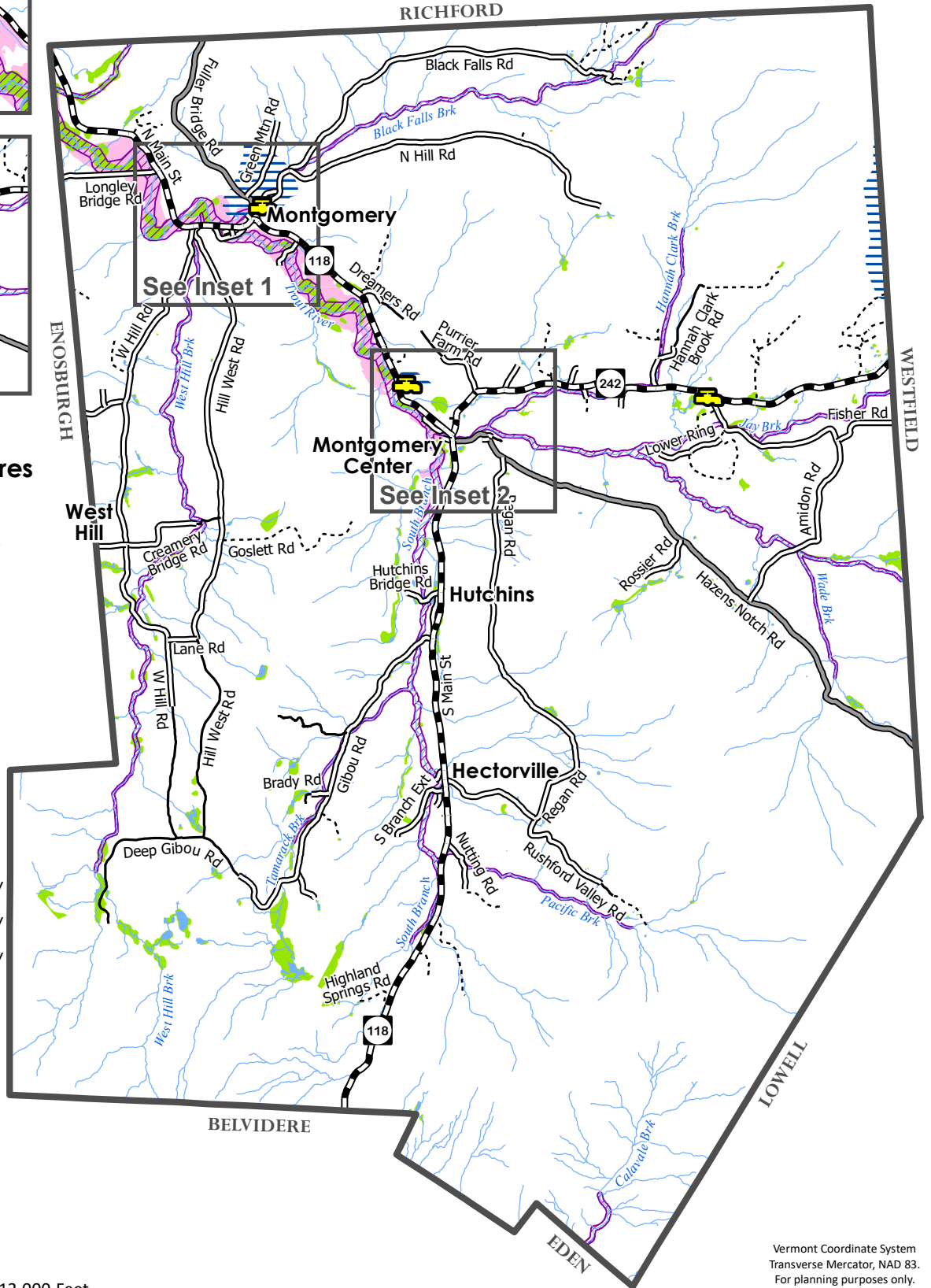
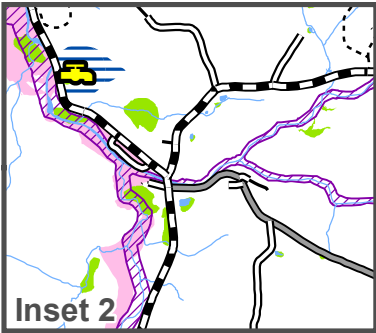
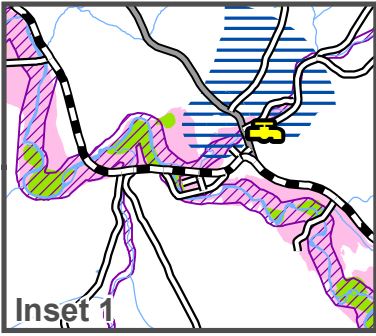


Montgomery Center



WATER RESOURCES

TOWN OF MONTGOMERY



LEGEND

Water Resource Features

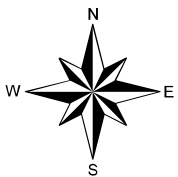
- Water Source
- River, Stream or Brook
- Pond
- Wetland
- 100 Year Flood Zone
- River Corridor
- Groundwater Source Protection Area

Transportation Features

- State Highway
- Class 2 Town Highway
- Class 3 Town Highway
- Class 4 Town Highway
- Private Road

Other Feature

- Town Boundary



0 4,000 8,000 12,000 Feet

0 1 2 3 Miles

0 1,500 3,000 4,500 6,000 Meters

Vermont Coordinate System
Transverse Mercator, NAD 83.
For planning purposes only.



Prepared by:
Northwest Regional
Planning Commission
75 Fairfield Street
St. Albans, VT 05478
(802) 524-5958
www.nrpcvt.com
March - 2024