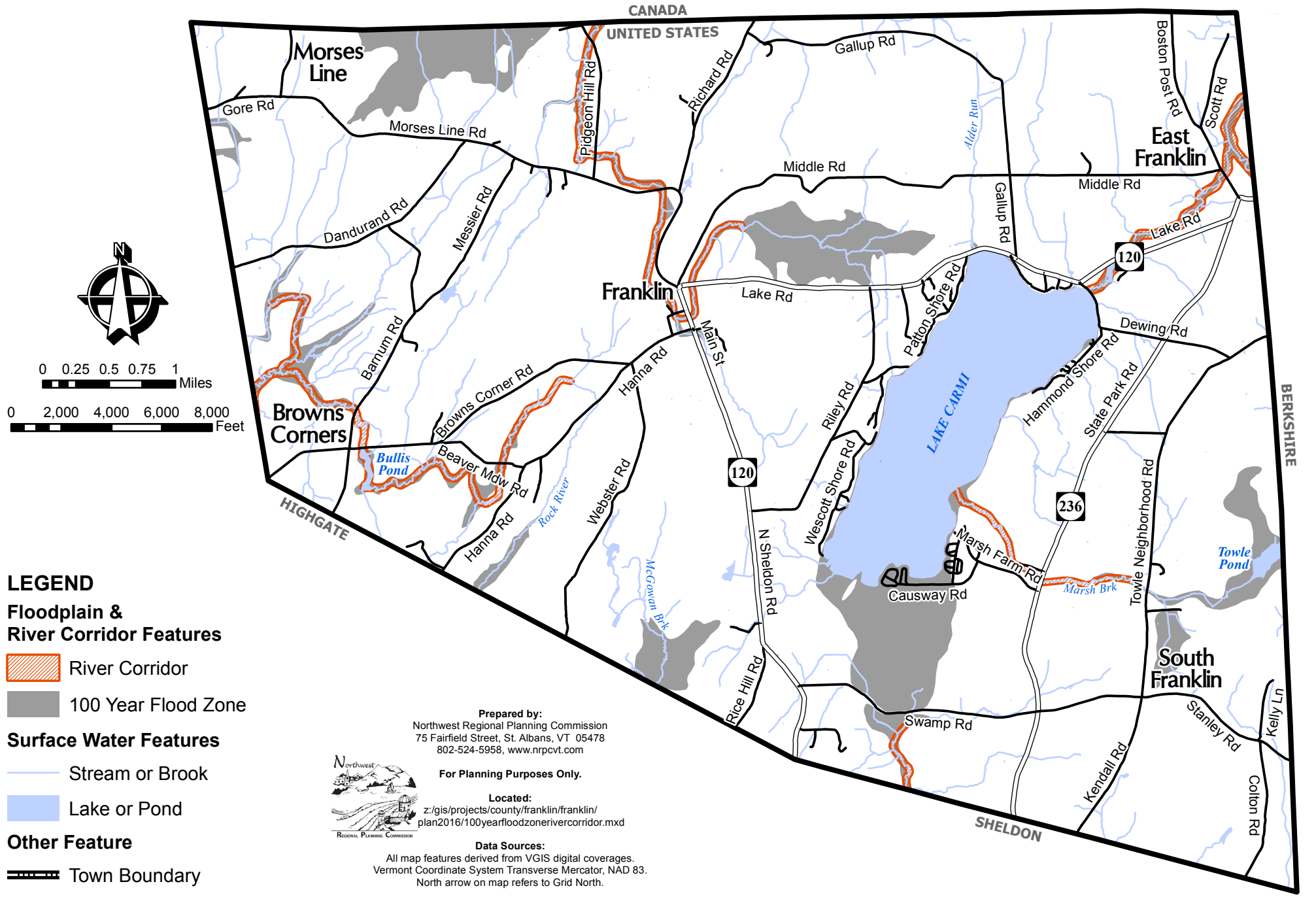




100 Year Flood Zone & River Corridor

Map 12.8





LEGEND

Floodplain & River Corridor Features

-  River Corridor
-  100 Year Flood Zone

Surface Water Features

-  Stream or Brook
-  Lake or Pond

Other Feature

-  Town Boundary

Prepared by:
 Northwest Regional Planning Commission
 75 Fairfield Street, St. Albans, VT 05478
 802-524-5958, www.nrpcvt.com

For Planning Purposes Only.

Located:
 z:/gis/projects/county/franklin/franklin/
 plan2016/100yearfloodzonerivercorridor.mxd



REGIONAL PLANNING COMMISSION

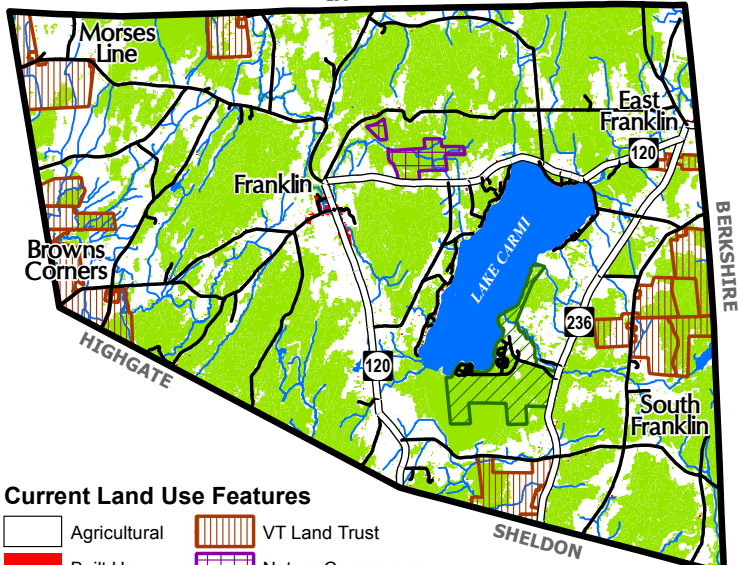
Data Sources:

All map features derived from VGIS digital coverages.
 Vermont Coordinate System Transverse Mercator, NAD 83.
 North arrow on map refers to Grid North.

Current Land Use

Map 13.1

CANADA

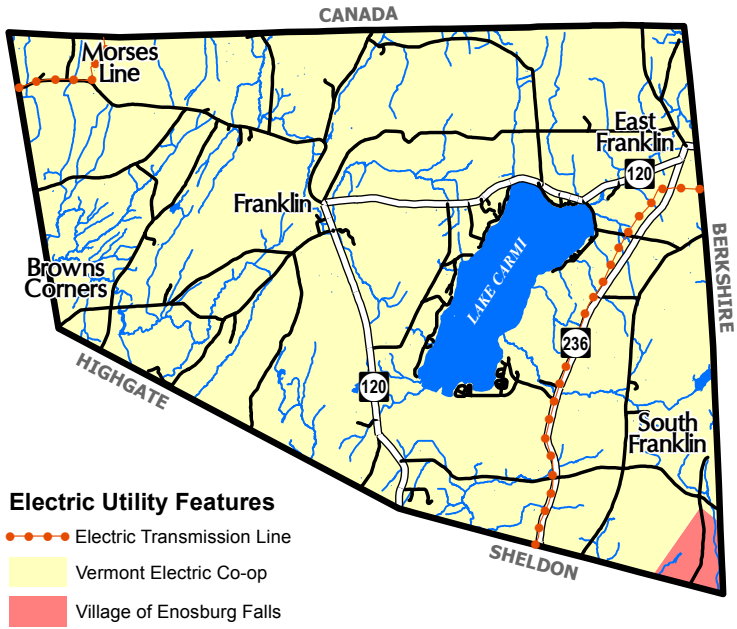


Current Land Use Features

- | | | | |
|---|--------------|--|-----------------------|
|  | Agricultural |  | VT Land Trust |
|  | Built Up |  | Nature Conservancy |
|  | Forested |  | Lake Carmi State Park |

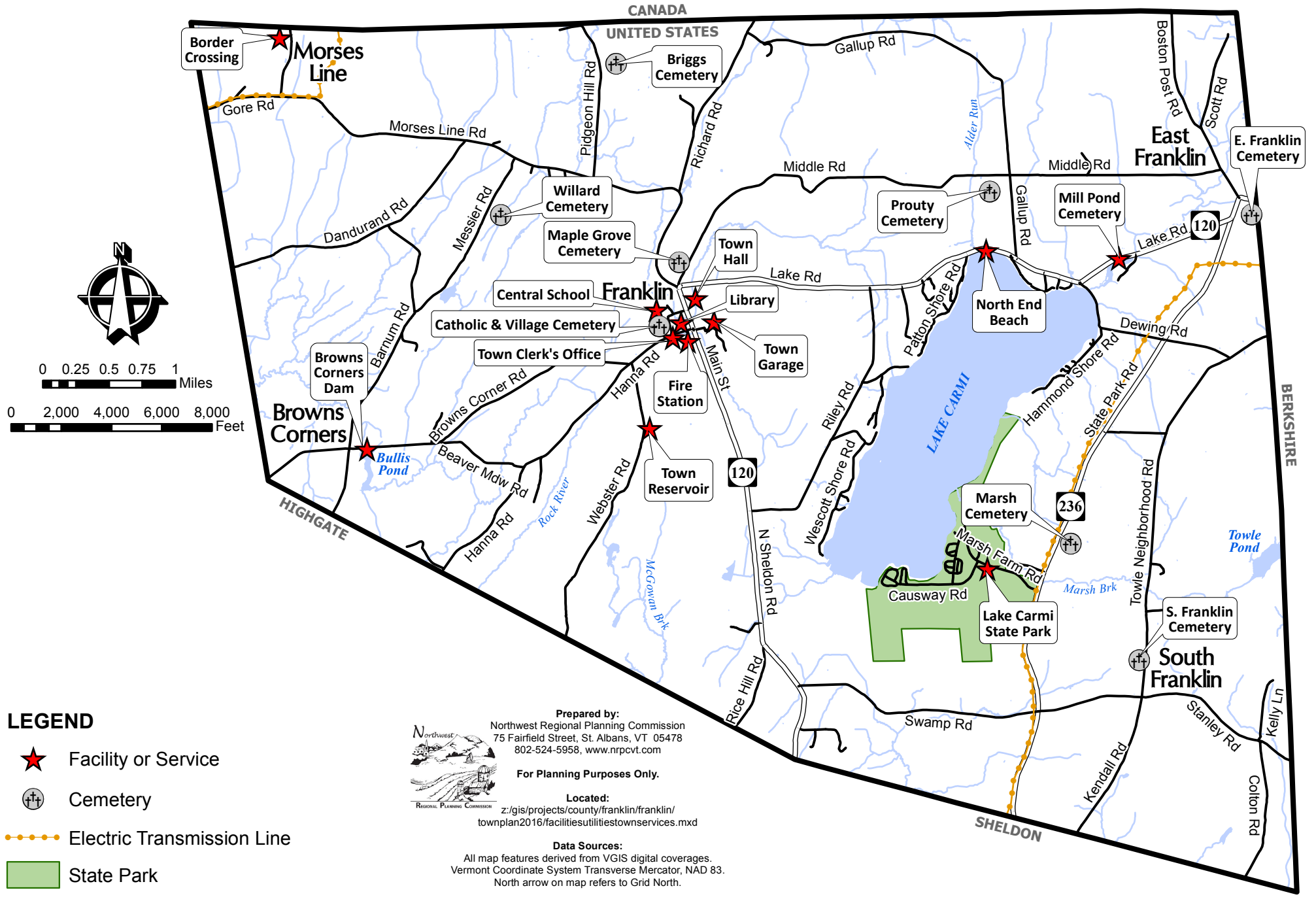
Electric Utility Areas

Map 9.1



Facilities, Utilities & Town Services

Map 6.1



0 0.25 0.5 0.75 1 Miles

0 2,000 4,000 6,000 8,000 Feet

LEGEND

★ Facility or Service

⊕ Cemetery

--- Electric Transmission Line

■ State Park



Prepared by:
Northwest Regional Planning Commission
75 Fairfield Street, St. Albans, VT 05478
802-524-5958, www.nrpcvt.com

For Planning Purposes Only.

Located:
z:/gis/projects/county/franklin/franklin/
townplan2016/facilitiesutilities/townservices.mxd

Data Sources:
All map features derived from VGIS digital coverages.
Vermont Coordinate System Transverse Mercator, NAD 83.
North arrow on map refers to Grid North.

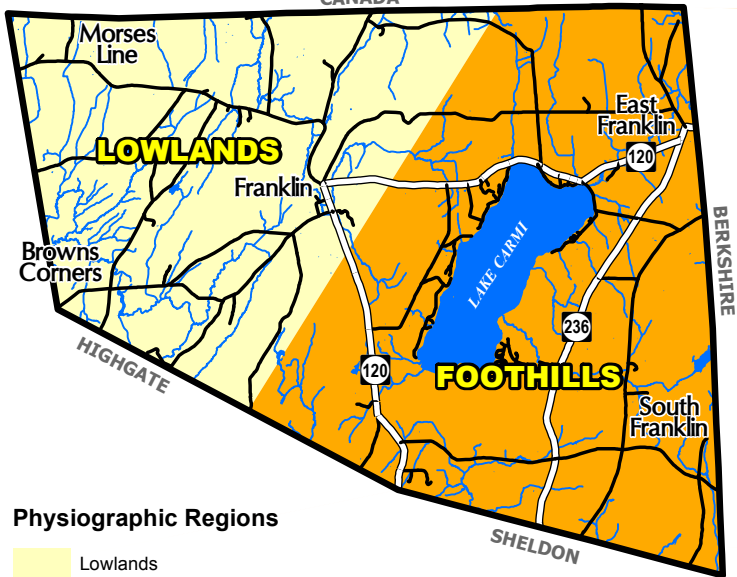
Franklin Central School



Physiographic Regions

Map 12.1

CANADA



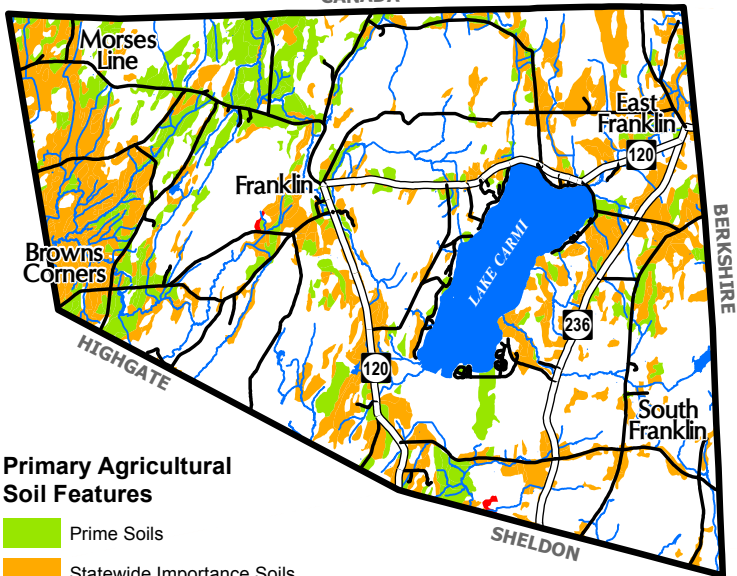
Physiographic Regions

-  Lowlands
-  Foothills




Primary Agricultural Soils

Map 12.4

CANADA

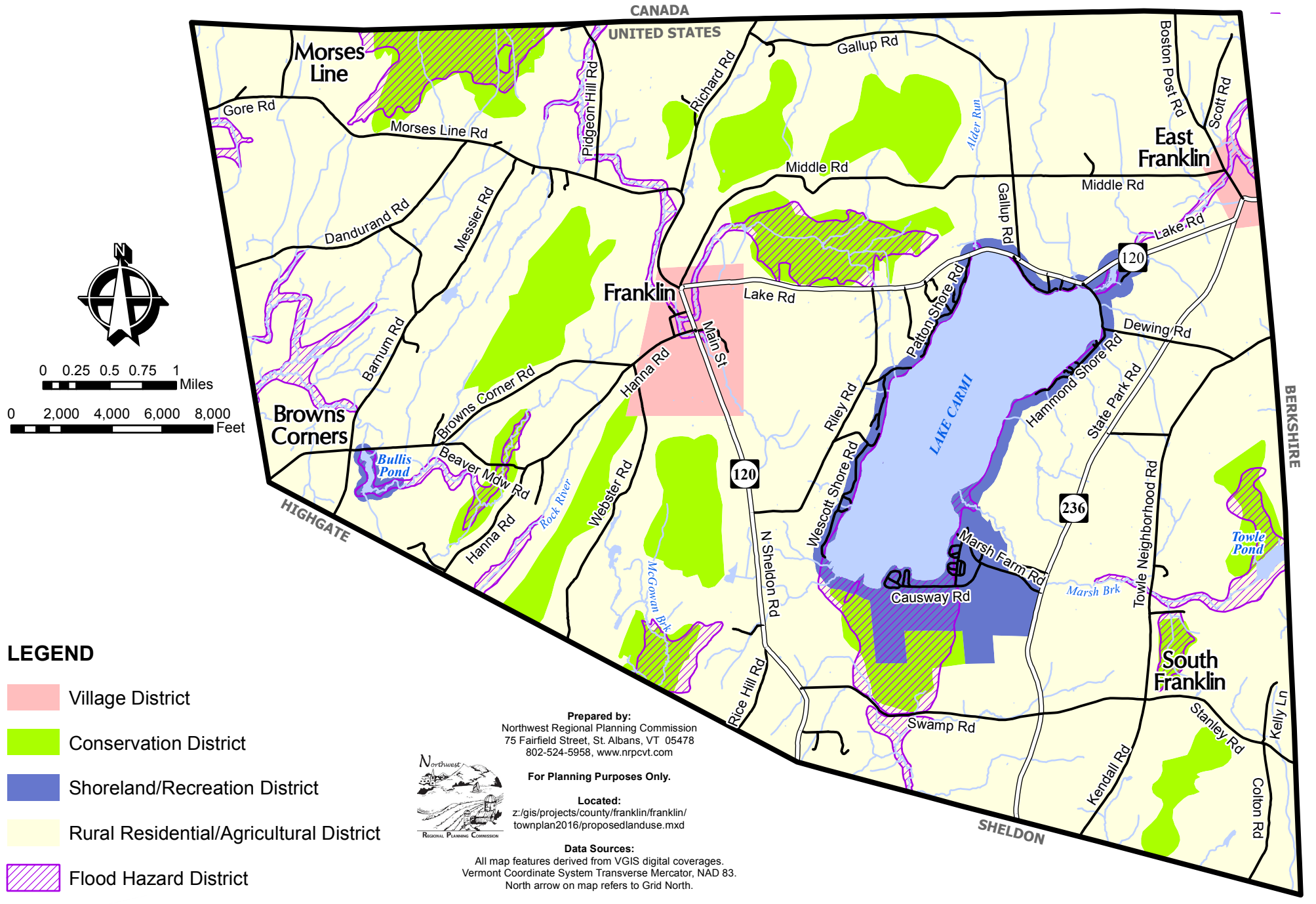


Primary Agricultural Soil Features

-  Prime Soils
-  Statewide Importance Soils
-  Local Soils

Proposed Land Use

Map 13.2



LEGEND

- Village District
- Conservation District
- Shoreland/Recreation District
- Rural Residential/Agricultural District
- Flood Hazard District



Prepared by:
 Northwest Regional Planning Commission
 75 Fairfield Street, St. Albans, VT 05478
 802-524-5958, www.nrpcvt.com

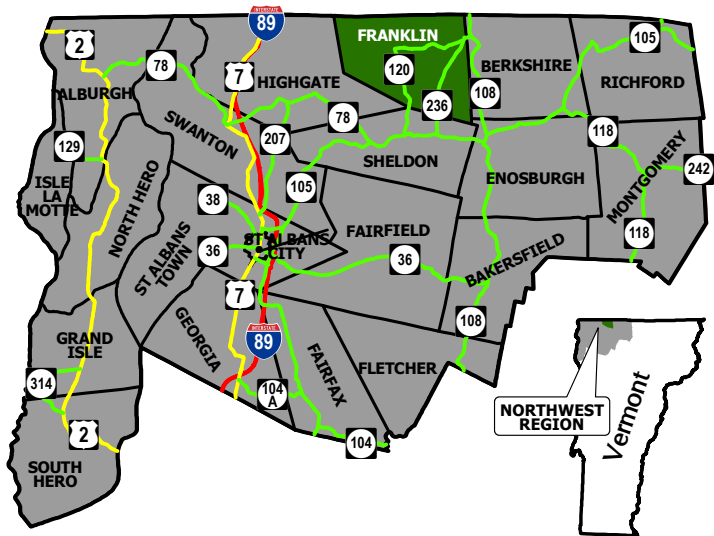
For Planning Purposes Only.

Located:
 z:/gis/projects/county/franklin/franklin/
 townplan2016/proposedlanduse.mxd

Data Sources:
 All map features derived from VGIS digital coverages.
 Vermont Coordinate System Transverse Mercator, NAD 83.
 North arrow on map refers to Grid North.

Northwest Regional Locator Map

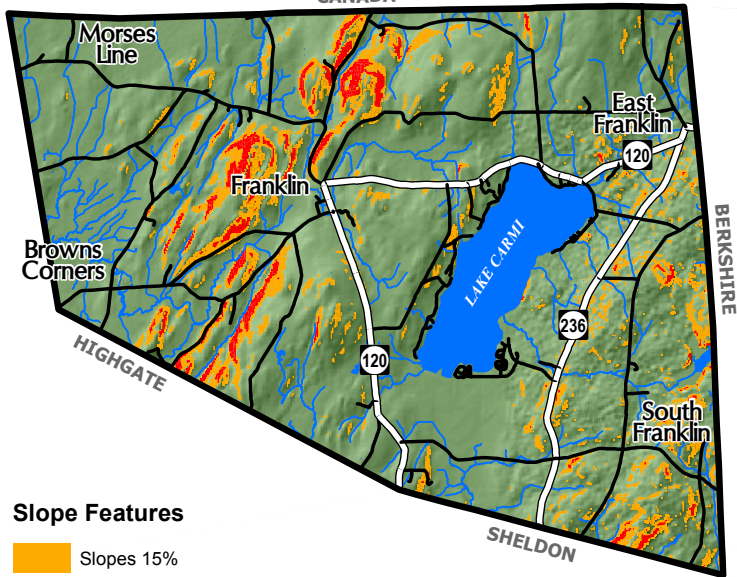
Map 4.1



Steep Slopes

Map 12.3

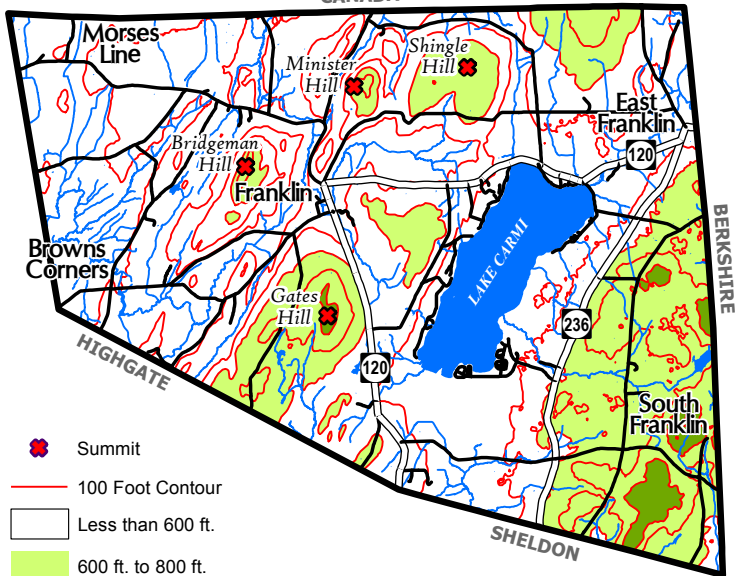
CANADA



Topography

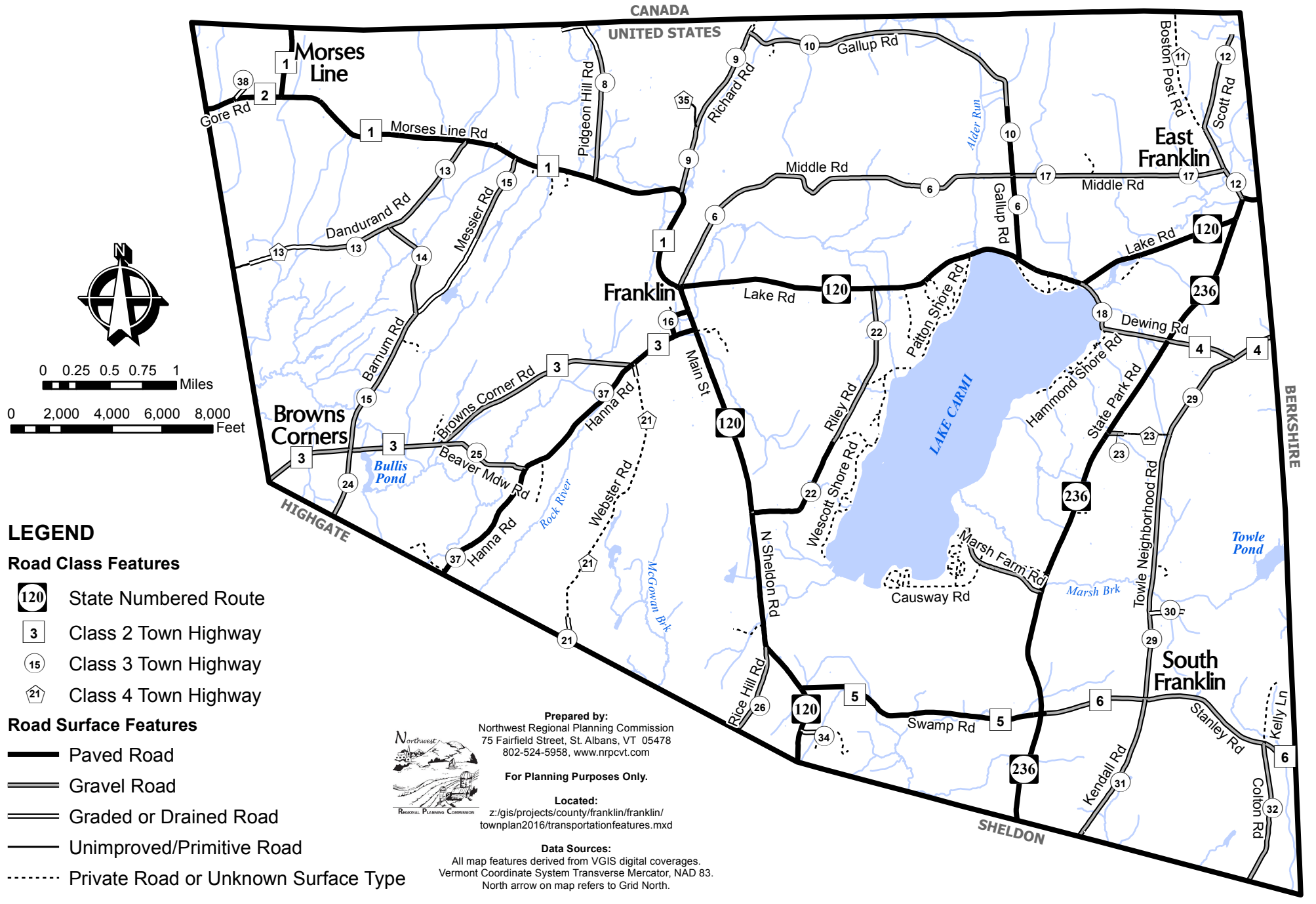
Map 12.2

CANADA









Transportation Features

Map 10.1



LEGEND

- Road Class Features**
-  State Numbered Route
 -  Class 2 Town Highway
 -  Class 3 Town Highway
 -  Class 4 Town Highway

- Road Surface Features**
-  Paved Road
 -  Gravel Road
 -  Graded or Drained Road
 -  Unimproved/Primitive Road
 -  Private Road or Unknown Surface Type



Prepared by:
 Northwest Regional Planning Commission
 75 Fairfield Street, St. Albans, VT 05478
 802-524-5958, www.nrpcvt.com

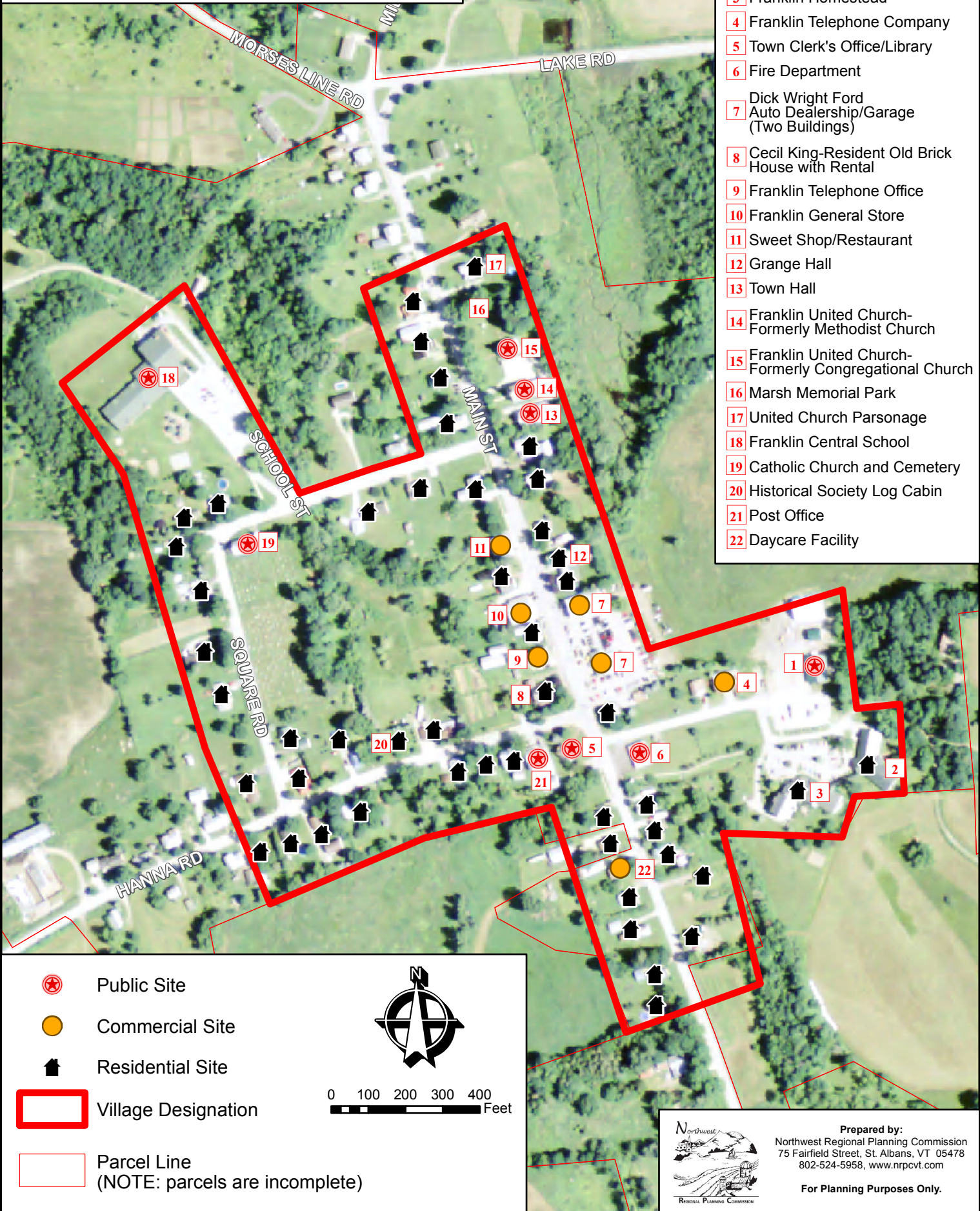
For Planning Purposes Only.

Located:
 z:/gis/projects/county/franklin/franklin/
 townplan2016/transportationfeatures.mxd

Data Sources:
 All map features derived from VGIS digital coverages.
 Vermont Coordinate System Transverse Mercator, NAD 83.
 North arrow on map refers to Grid North.

Village Center Designation


- 1 Municipal Garage
- 2 Franklin Carriage House
- 3 Franklin Homestead
- 4 Franklin Telephone Company
- 5 Town Clerk's Office/Library
- 6 Fire Department
- 7 Dick Wright Ford Auto Dealership/Garage (Two Buildings)
- 8 Cecil King-Resident Old Brick House with Rental
- 9 Franklin Telephone Office
- 10 Franklin General Store
- 11 Sweet Shop/Restaurant
- 12 Grange Hall
- 13 Town Hall
- 14 Franklin United Church-Formerly Methodist Church
- 15 Franklin United Church-Formerly Congregational Church
- 16 Marsh Memorial Park
- 17 United Church Parsonage
- 18 Franklin Central School
- 19 Catholic Church and Cemetery
- 20 Historical Society Log Cabin
- 21 Post Office
- 22 Daycare Facility

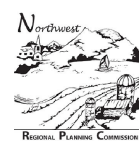


-  Public Site
-  Commercial Site
-  Residential Site
-  Village Designation



0 100 200 300 400 Feet

 Parcel Line
(NOTE: parcels are incomplete)



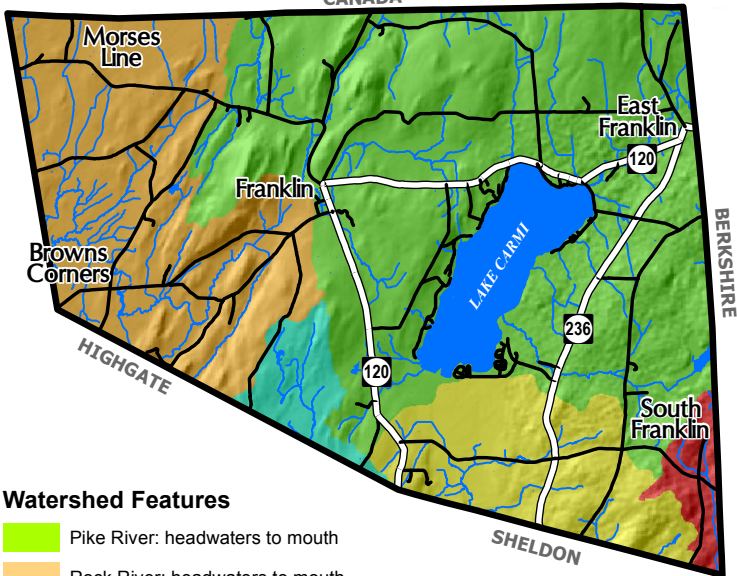
Prepared by:
Northwest Regional Planning Commission
75 Fairfield Street, St. Albans, VT 05478
802-524-5958, www.nrpcvt.com

For Planning Purposes Only.




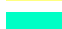
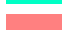
Watershed Map

Map 12.5

CANADA

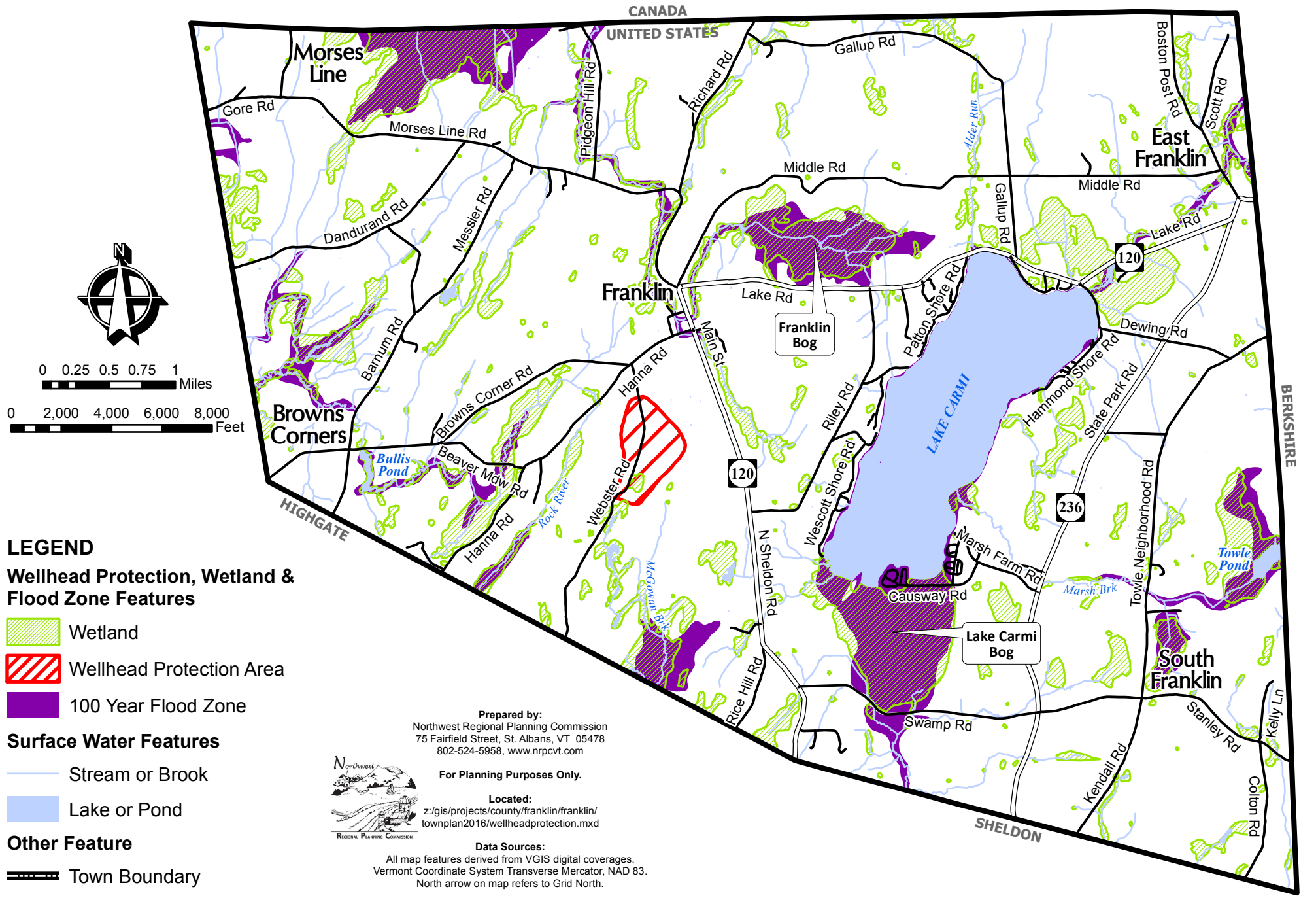


Watershed Features

-  Pike River: headwaters to mouth
-  Rock River: headwaters to mouth
-  Missisquoi River: confluence Tyler Branch to confluence Black Creek
-  Missisquoi River: confluence Black Creek to confluence Hungerford Brook
-  Missisquoi River: confluence with Trout River to confluence Tyler Branch

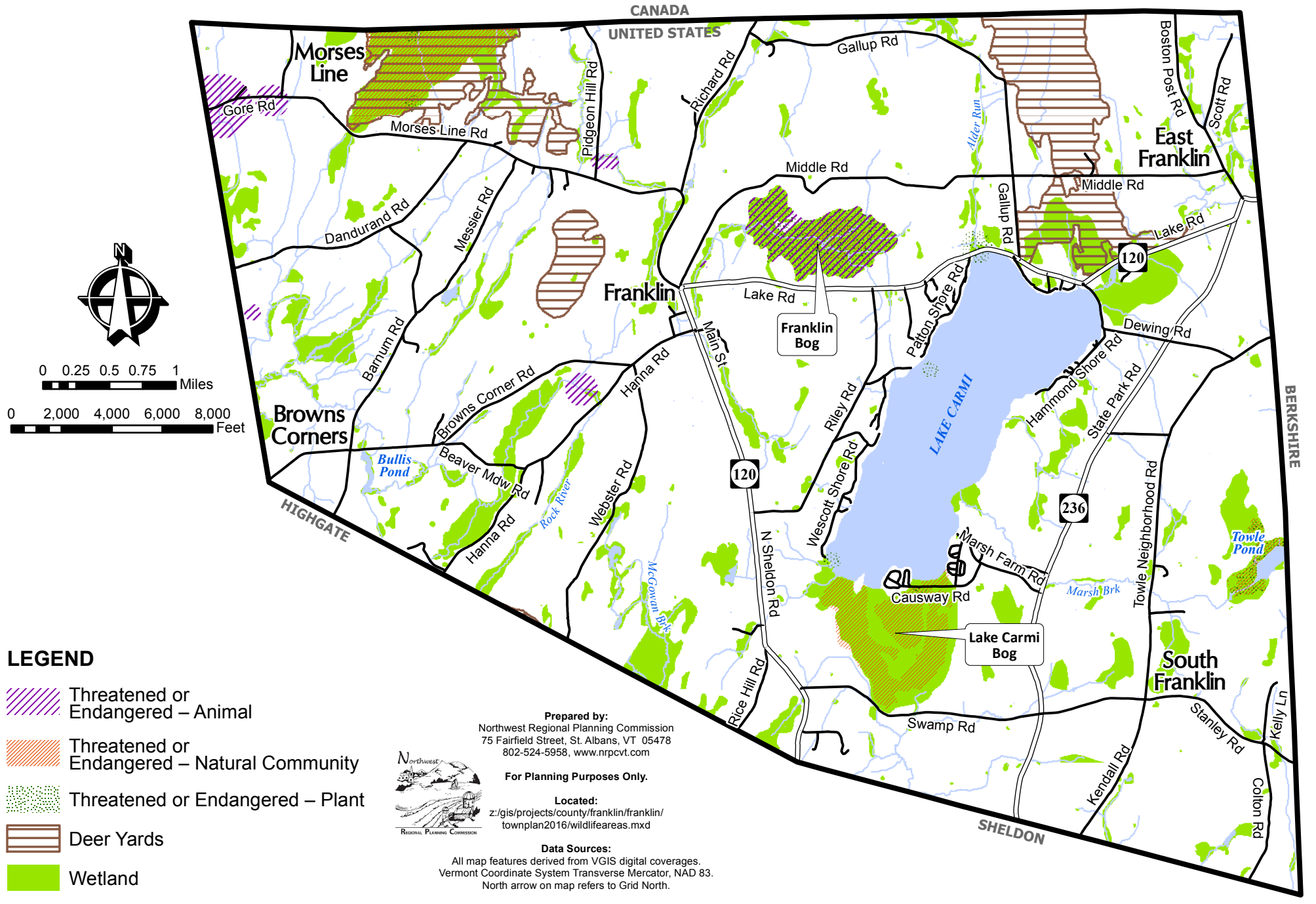
Wellhead Protection Areas, Wetlands & Flood Zones

Map 12.6



Wildlife Areas

Map 12.7



Prepared by:
 Northwest Regional Planning Commission
 75 Fairfield Street, St. Albans, VT 05478
 802-524-5958, www.nrcvt.com

For Planning Purposes Only.

Located:
 z:/gis/projects/county/franklin/franklin/
 townplan2016/wildlifeareas.mxd

Data Sources:
 All map features derived from VGIS digital coverages.
 Vermont Coordinate System Transverse Mercator, NAD 83.
 North arrow on map refers to Grid North.